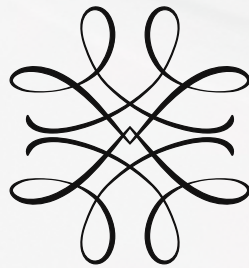


WE ARE HUMAN
LIVE & INVEST

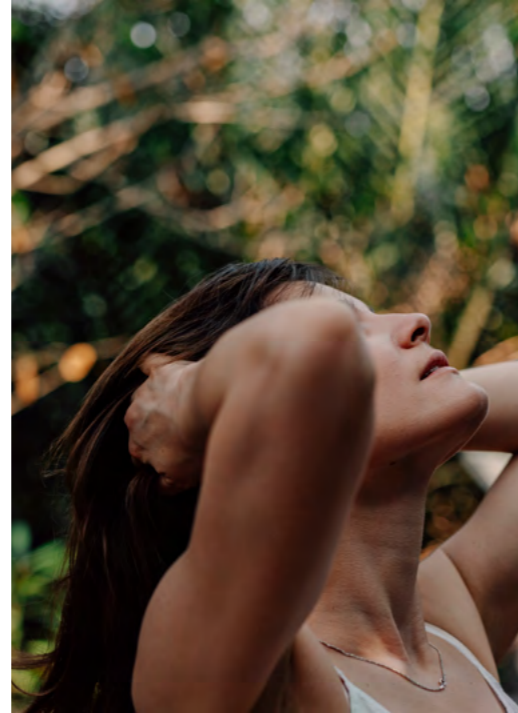


THE WATERCREST

A SANCTUARY VILLA COLLECTION

A place for
the *dreamers*





Let *nature in*

Greenery and flora are becoming increasingly cherished spaces within the world's expanding cityscapes. As urban areas continue to grow and develop, the presence of natural elements within these environments is not just a luxury but a necessity for enhancing the quality of life for residents.

Therefore, it is more evident than ever that resident-first design must prioritize accommodating not only people but also the natural world in which everyone needs to thrive.



Every *detail* in life
is worth your *attention*

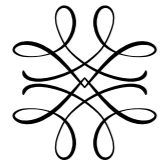


We begin every project with a single-minded purpose: to transform a location on a map into somewhere that instantly feels like home. Our communities and neighbourhoods exemplify our design-led approach through craft and quality, but their magic is in their ability to create emotional junctures between person and place. In our apartment buildings, amenities, and communities, this is a shared experience with the power to connect us all.





*Imagination
is all it takes*

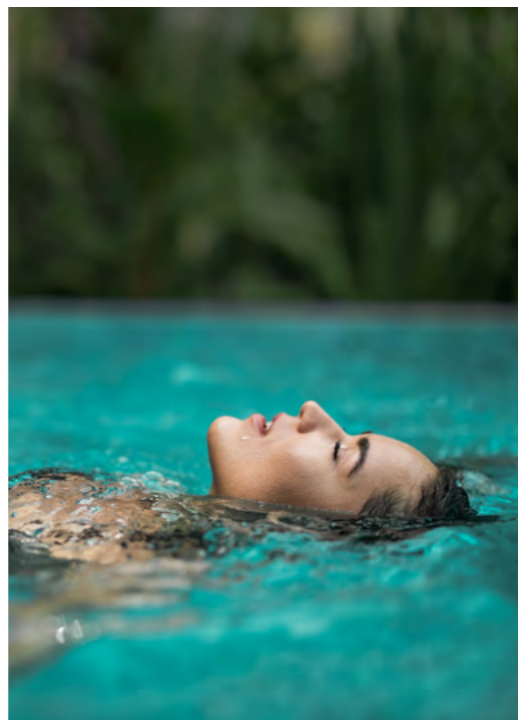
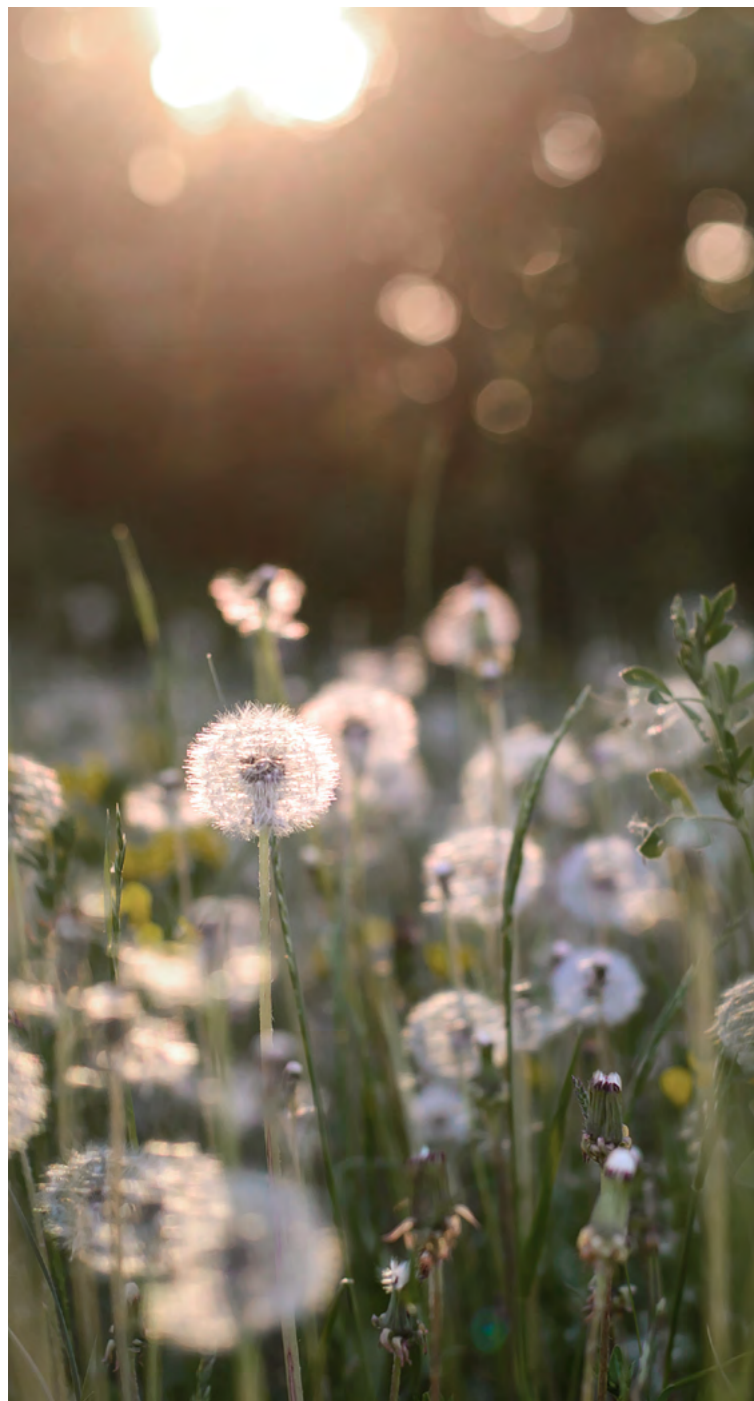


THE WATERCREST

Within a ten-minute drive of Downtown Dubai, a private community awaits within a lush walled garden. Designed to capture the imagination of its residents, The Watercrest emulates the tranquility of a peaceful waterfront, with a bespoke river oasis gently flowing through its center.

The Watercrest is a private haven for young families. While it remains secluded within its garden community, it is extremely well-connected to excellent schools, hospitals, and the all-embracing opportunities of Dubai.

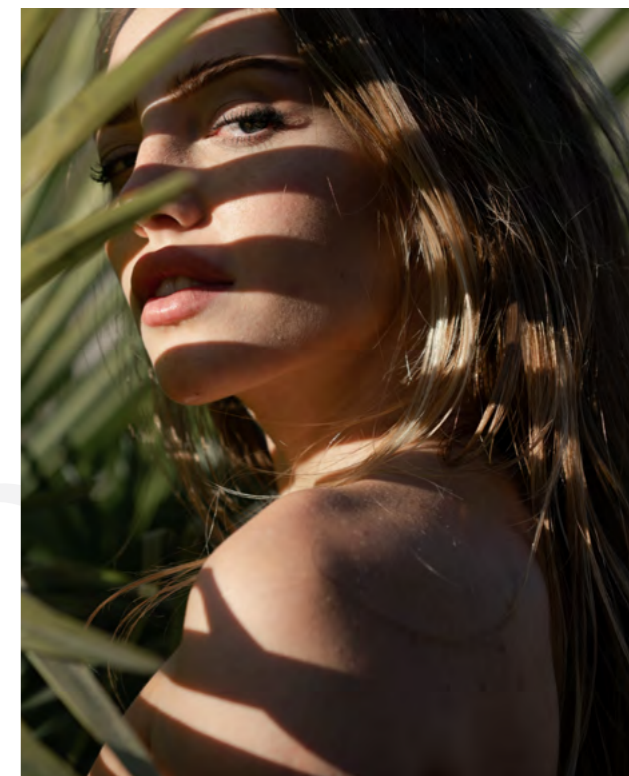




A sensorial *masterclass*

The sights of the architectural color palette and vibrant flowers, along with the sound technology diffused through the material palette of each residence, are in harmony with the garden birds that inhabit the community. The sweet floral aromas transport residents to a natural paradise with aromatic plants and blossoms, while an eclectic selection of natural and man-made materials invites residents to explore the tactile elements of their homes.

The Watercrest stands out with its exceptional ability to provide a fully immersive sensory experience.



Nurtured *by nature*



Nestled in the exclusive district of Mohammed Bin Rashid City, The Watercrest offers an exquisite blend of design-led sophistication and serene living. Curated for discerning families, our collection of villas and townhouses epitomizes elegance and exclusivity. From the elegant interiors to the serene outdoor spaces, every detail is crafted to create an idyllic family retreat. Here, families can thrive in an environment that nurtures their well-being and provides a peaceful escape from the hustle and bustle of city life.

The Watercrest is more than just a place to live; it is a community that promises a harmonious lifestyle filled with sensorial moments, perfectly in tune with nature.

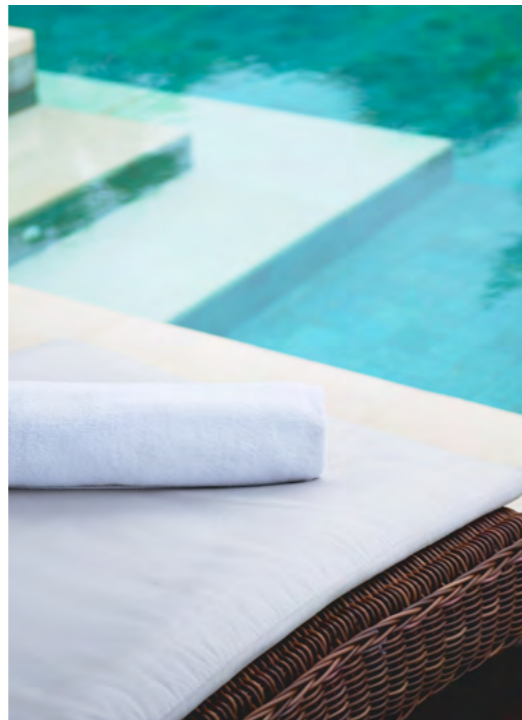




Driving *distances*

The Sanctuary Villas	3 Mins
Academic City	11 Mins
Dubai Design District	12 Mins
Dubai International Airport	16 Mins
Meydan Racecourse	17 Mins
Business Bay	18 Mins
Dubai Hills Mall	18 Mins
Museum of the Future	19 Mins
Burj Khalifa / Dubai Mall	20 Mins
Dubai International Financial Centre	22 Mins
Jumeirah Beach	22 Mins
Dubai Hills Golf Club	22 Mins
Al Maktoum International Airport	22 Mins
Jumeirah Golf Estate	24 Mins
Palm Jumeirah	32 Mins





A natural *phenomenon*

Gardens lined with open and shaded walkways, secluded seating areas, family cabanas, dog walking areas, and pristine lawns grow outwards from the center of the community. The amenities are designed to nurture and nourish the residents within its walls, providing a vehicle-free haven that's safe for all ages to roam. Beautiful water features and landscaped sculptures further enhance the serene atmosphere, inviting residents to explore and enjoy their surroundings.





The source of the *community*

The River Club

At the very heart of The Watercrest, and from where the community gets its name, is a man-made oasis. It is a place to relax and refresh, among tranquil springs and reconnect with the nature that surrounds it. Throughout its course, The River meanders through experiences for both adults and children, from a shaded plunge pool to splash play areas and a gently flowing waterway. Living here feels like being on a perpetual holiday, offering residents a constant retreat within their own homes.





Heart & soul

The Lake House

The central hub of the community is located adjacent to the tranquil waters of The River. Designed for both relaxation and entertainment in sophisticated measures, the space is split over three floors and opens out across an open decking area. Spacious communal areas for dining, entertaining, and daydreaming invite a sense of peace. There are various seating configurations for large and small parties, facilities designed for both adults and children, and even a private outdoor cinema.





GYM
MODE
ON

GAME ON





Elevated *workouts*

Fitness and Wellbeing

On the first floor of The Lakehouse, a state-of-the-art fitness area and dedicated yoga studio offer panoramic views of the gardens. Professionally equipped and designed to refocus your mind with serene garden vistas, The Watercrest Fitness Center transforms self-care into a daily ritual to cherish. After an invigorating workout, descend to the lower level to unwind in the calming spa facilities, achieving the perfect balance of exercise and relaxation.



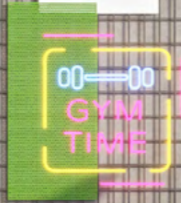
It's a vibe



It's a vibe



NO EXCUSES



Play *in design*

Kids' Club

Children have complete freedom to play, learn, and make friends within the safety of a soft play area on The Lakehouse's ground level. Equipped with trusted brands and environmentally friendly materials, it provides ample space for children to thrive while giving parents complete peace of mind. This vibrant space features interactive learning stations designed to foster creativity and cognitive development, ensuring children are engaged and stimulated as they play.





Welcome to the Jungle



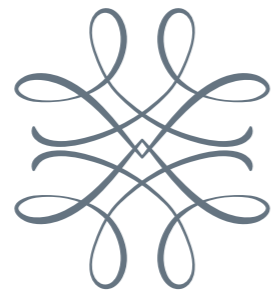


Home in a *new context*

The combination of triplex townhouses, fourplex townhouses, and villas results in a beautifully diverse neighbourhood aesthetic. The architecture of each home is a timeless balance of solid and porous materials contrasting with large glass facades that direct natural light into calming patinas.

To reconnect the homes with their surroundings, aromatic flowers grow at their boundaries and entrances.





The RIVERINE Villas

Our four-bedroom villa is meticulously crafted to provide both comfort and elegance, ensuring that every resident enjoys a refined living experience. Each villa features a private pool, adding an extra touch of exclusivity and a personal oasis for relaxation and recreation. Thoughtfully designed interiors and high-end finishes create a seamless blend of sophistication and practicality, making these villas the perfect sanctuary for those seeking a serene and upscale lifestyle.







The Riverine Villas

Our four-bedroom villa collection welcomes residents into a spacious double-height living room and dining area, creating an immediate sense of openness and grandeur. The accentuated staircase, a staple of contemporary design, not only serves as a striking visual centerpiece but also maximizes space and functionality within the home. Large windows allow natural light to flood the interiors, further amplifying the sense of space and creating a warm, inviting atmosphere.





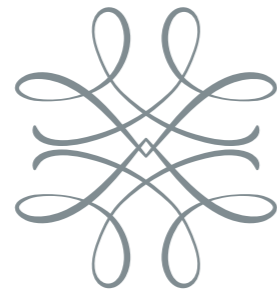


Bathrooms

The elements in our residences culminate in a sophisticated charm that complements the clean modern lines of the architecture, interior design, furnishings, and artwork—curated for its deep, rich color and dramatic black-and-white photography. The open nature of the living spaces allows for separate zones designed for specific activities. These areas, although distinct in their purpose, are connected by a cohesive flow and uncluttered aesthetic.







The ALCOVE

Townhouses

Our mid-unit townhouses offer a homely collection of spaces with a contemporary aesthetic, blending modern design elements with timeless comfort.

Thoughtfully engineered, these townhouses ensure a peaceful and serene living experience, with superior sound insulation creating a tranquil environment.







The Alcove Townhouses

Residents have the option to choose between an open or closed kitchen, allowing for a personalized living space that caters to individual preferences and lifestyles. Each townhouse also features spacious balconies and private gardens, perfect for outdoor relaxation and entertaining. With ample storage and functional layouts, these homes are designed to accommodate the diverse needs of modern families. Convenient access to community amenities further enhances the appeal of these exceptional residences.

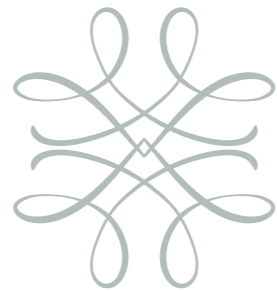




Dining Area

The dining area is designed to be both elegant and functional, providing an ideal space for family meals and entertaining guests. With a spacious layout that accommodates a large dining table, this area offers comfortable seating and a warm, inviting atmosphere. Large windows flood the space with natural light, enhancing the ambiance and making it a pleasant place to gather. Serving as the heart of the home, the kitchen is crafted to meet the demands of modern living, offering a choice between open or closed layouts to cater to various cooking and dining preferences.





The ARCADIA

Townhouses

Our corner-unit townhouse collection is illuminated with a natural skylight that distributes warmth and brightness throughout the space, enhancing the design and interior characteristics. Space, haptics, and efficiency have been carefully considered and seamlessly integrated into its high-quality build.







The Arcadia Townhouses

The open-plan layout encourages fluid movement and connection between spaces, while premium materials and finishes add a touch of sophistication. The open kitchen, integrated seamlessly with the living and dining areas, promotes a social and interactive atmosphere, perfect for family gatherings and entertaining. Thoughtfully designed, each townhouse offers an inviting and elegant environment, making it the perfect blend of comfort and modern living.



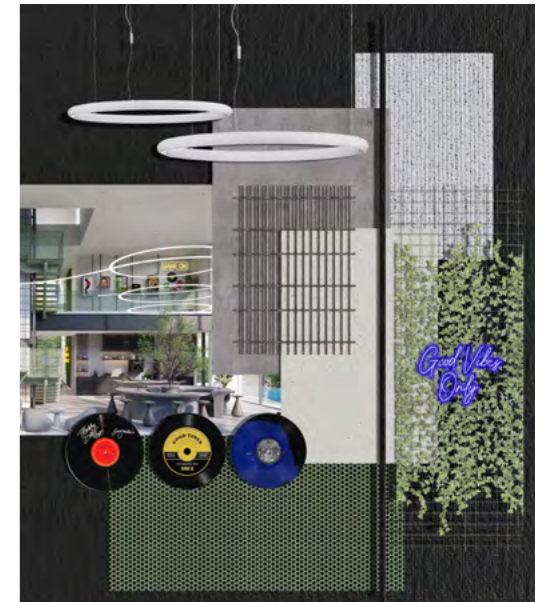


Kitchens

The open kitchen and dining area in the townhouse create a harmonious blend of style and functionality, ideal for modern living. The kitchen, seamlessly integrated with the dining space, promotes a social and interactive atmosphere, perfect for family gatherings and entertaining guests. High-end appliances, ample countertop space, and custom cabinetry ensure a practical yet elegant cooking environment. Adjacent to the dining area, a feature staircase serves as a striking visual centerpiece, enhancing the contemporary aesthetic of the home.



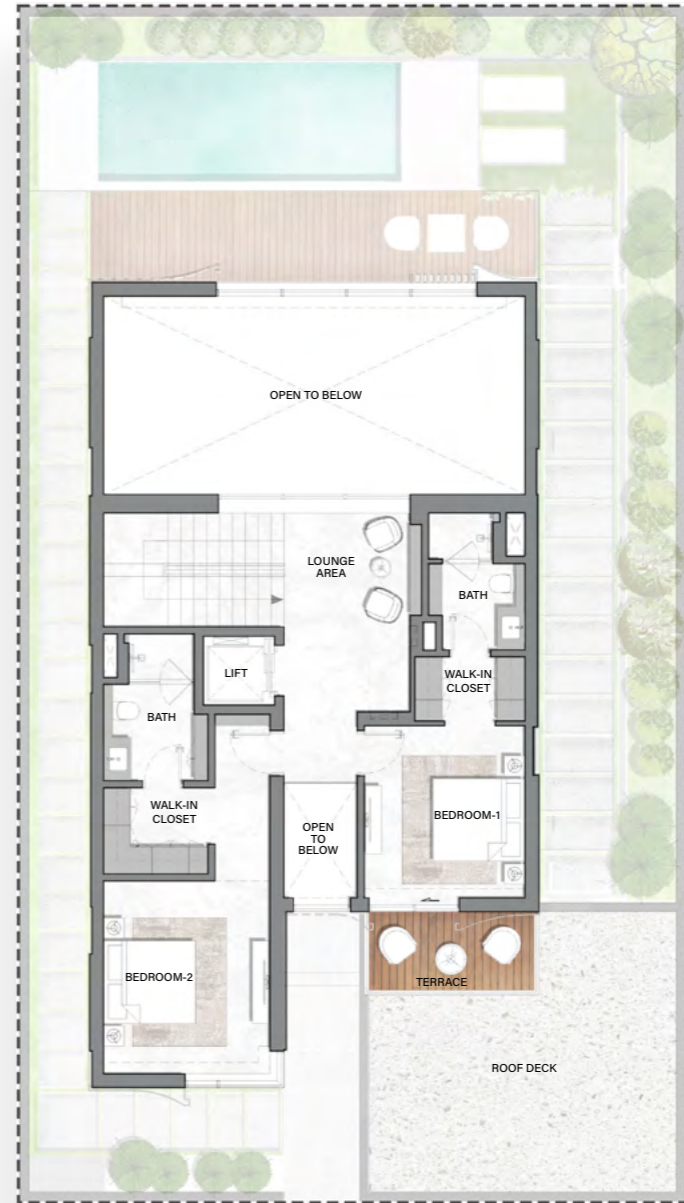
Floorplans



GROUND FLOOR



FIRST FLOOR





The Riverine

4-Bedroom Villas

Total Area
4,449 sq. ft.

Plot Area Range
4,031 sq. ft. – 4,152 sq. ft.



GROUND FLOOR



The client shall have the option to choose between an open or closed kitchen design at the time of purchase. This choice must be finalized prior to the completion of the sale.

FIRST FLOOR



ROOF FLOOR



The Alcove

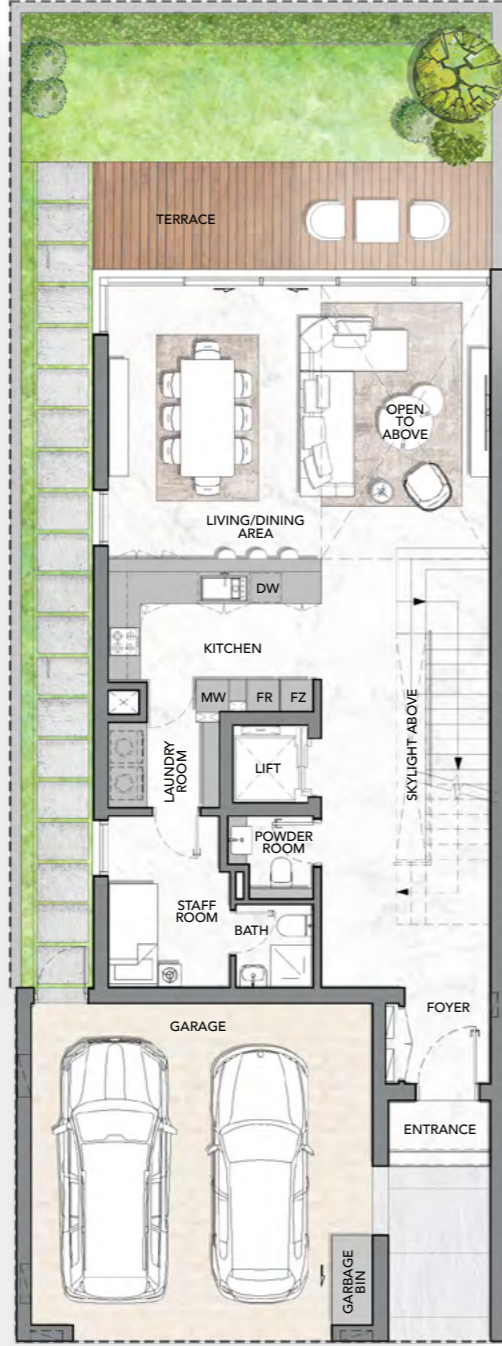
3-Bedroom Townhouses

Total Area
3,585 sq. ft.

Plot Area Range
2,007 sq. ft. – 2,414 sq. ft.



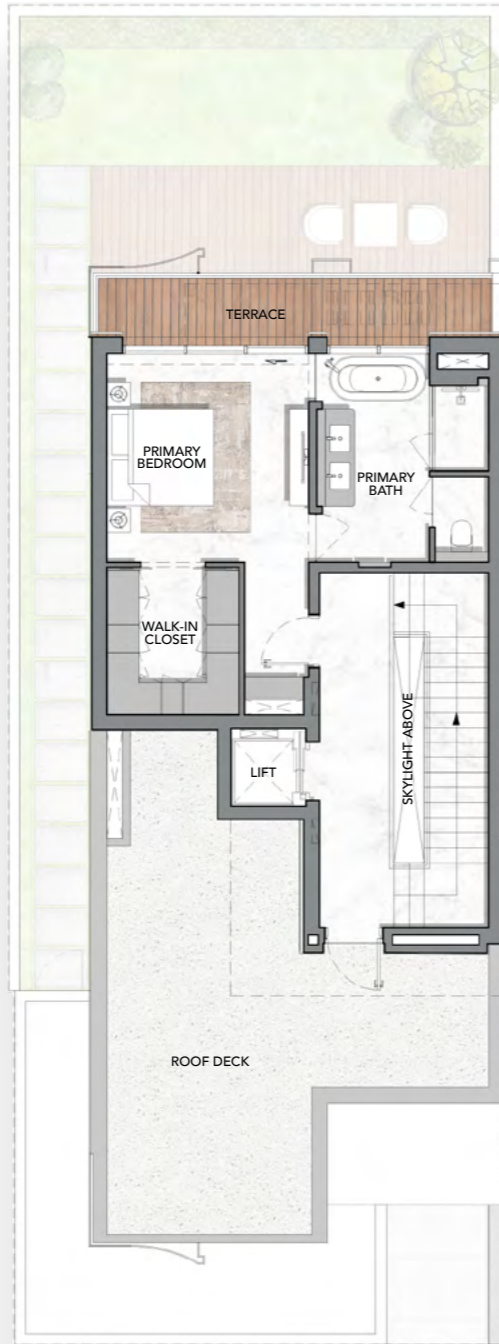
GROUND FLOOR



FIRST FLOOR



ROOF FLOOR



The Arcadia 3-Bedroom Townhouses

Total Area

3,672 sq. ft.

Plot Area Range

2,416 sq. ft. – 2,979 sq. ft.





WE ARE HUMAN
LIVE & INVEST