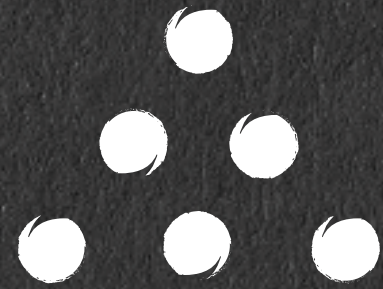


**WE ARE HUMAN**  
LIVE & INVEST



SIX SENSES  
RESIDENCES

DUBAI MARINA

# PRESENTING SIX SENSES

*To live is to connect.*

The Six Senses brand was born from the desire to help people reconnect with themselves, others and the world around them.

This vision is translated across a broad property portfolio, with wellness, sustainability and out-of-the-ordinary experiences at the core. That's because reconnection can happen anywhere, whether on a remote private island, snowy mountain hideaway, desert dune, lush forest, wine estate or lively lounge in the heart of a city.

From sleep standards and the food on the table to immersive local culture and boosting guests' well-being through pioneering science and ancient wisdom, the aim is to awaken their senses to what's possible.

Six Senses is pleased to unveil its first-ever standalone branded residential development, Six Senses Residences Dubai Marina.



# A TOWERING LEGACY

Born out of unrivaled craftsmanship, visionary design, and a profound sense of place, Six Senses Residences Dubai Marina emerges as an address unlike any other.

Soaring 122 stories above the pulsating heart of one of Dubai's most coveted addresses, the extraordinary tower provides an unparalleled living experience, effortlessly blending with the dynamic energy and vibrancy of Dubai's global metropolis.



Reflecting a shared philosophy between its design and 'The City of the Future', Six Senses Residences Dubai Marina presents itself on the world stage as the tallest residential tower of its time.



An aerial night view of the Dubai Marina skyline. The central focus is the Six Senses Residences Dubai Marina, a tall, slender skyscraper with a distinctive curved top and illuminated facade. To its right is the Burj Khalifa, recognizable by its spire. The surrounding area is filled with other modern high-rise buildings, some with unique architectural features like domes and curved facades. The city lights reflect on the water in the background, and the overall scene is a vibrant display of urban architecture.

# MASTERPIECE OF VISIONARY DESIGN

Crafting an architectural narrative that achieves a delicate balance between artistry and functional design, Six Senses Residences Dubai Marina tells a compelling story of sophistication and precision.

Set to transform the Dubai Marina skyline, this iconic structure not only reaches unprecedented heights but is a testament to progressive design and architectural excellence.

With a slender silhouette, its outer facade serves as a canvas of meticulous elegance, seamlessly integrating into the dynamic landscape of Dubai Marina, distinctly asserting its character while rightfully taking its place as a timeless landmark of the city.



# CONNECTED LIVING

An address at Six Senses Residences Dubai Marina places residents at the core of the city's highly sought-after Dubai Marina district, the ultimate destination for those seeking a vibrant yet balanced lifestyle.

## 5 MINS

- Dubai Marina
- Marina Mall
- Dubai Harbour Beachfront
- Emirates Golf Club

## 10 MINS

- JBR The Beach
- Bluewaters
- The Palm Jumeirah
- Mall of the Emirates

## 20 MINS

- Palm Jebel Ali
- Expo City

## 30 MINS

- Dubai Intl. Airport
- Al Maktoum Intl. Airport



Offering unparalleled convenience, Dubai Marina presents a unique blend of cosmopolitan lifestyle, spectacular waterfront views, renowned architecture and an array of world-class amenities at your doorstep.





# PURSUIT OF PERFECTION

Showcasing 251 exquisite residences, Six Senses Residences Dubai Marina features an array of unit typologies and sizes, ranging from two-to four-bedroom deluxe residences, four-bedroom half-floor penthouses, to ultra-luxurious four-and five-bedroom duplex and triplex Sky Mansions.

Each of the residences is meticulously designed to promote sustainability, well-being and contentment, integrating Sleep With Six Senses bedroom amenities and incorporating elements inspired by biophilia and classical feng shui.





The residences command sweeping panoramas that capture the entirety of Palm Jumeirah, Dubai Harbour Beachfront, Emirates Golf Course, Dubai Marina, Blue Waters, and Ain Dubai.





SIX SENSES  
RESIDENCES  
DUBAI MARINA

SELECT  
GROUP

0  
00  
000  
0000  
00000





# RARE REFINEMENT

## 2-TO 4-BEDROOM RESIDENCES

Bespoke timber joinery and delicate bronze accents cast a warm, golden glow throughout the interiors.

Harmonizing the natural warmth of wood with the elegant allure of metallic details, the sophisticated palette of the interiors invites you into a haven of understated luxury.

The residences are generously suffused with sunlight through full-height double-glazed windows and doors that open onto expansive balconies.









# ENTERTAIN IN ABUNDANCE

## 4-TO 5-BEDROOM DUPLEX AND TRIPLEX SKY MANSIONS

Embellished with precise attention to detail and sophisticated appointments, the four-and five-bedroom duplex and triplex Sky Mansions go beyond the extraordinary.

Space in abundance, these open-plan residences offer an undeniable sense of boundlessness, featuring lavish living and dining areas, a study/library, a personal gym and a cinema room, crafted to elevate day-to-day living and accommodate seamless entertaining.



Blurring the lines where the outer world intertwines with the inner sanctuary, balconies are strategically positioned on opposite ends, granting residents the distinctive advantage of panoramic views. This thoughtful design ensures that natural light and scenic vistas permeate the living spaces, creating a well-balanced and inviting ambience.











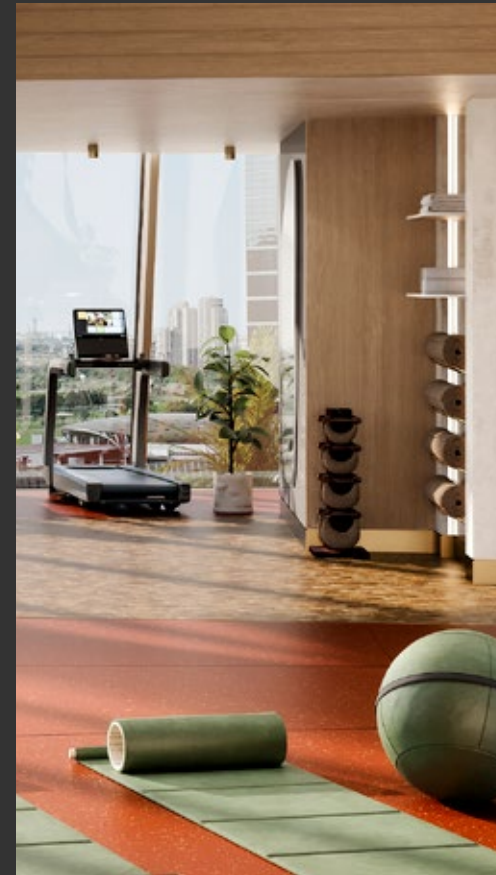
# THE ULTIMATE ESCAPISM

Revolutionising everyday living, residents are gifted with an extensive array of amenities spread across four levels, encompassing a total area of 61,250 sq. ft. Each level is crafted to enhance wellness, longevity and human connection.

Six Senses Residences Dubai Marina seamlessly enriches daily life with an unwavering dedication to holistic well-being. From cutting-edge fitness facilities catering to diverse exercise routines, entertainment, and landscaped social spaces fostering moments of relaxation and connection to specialized longevity areas and wellness treatments promoting rejuvenation.



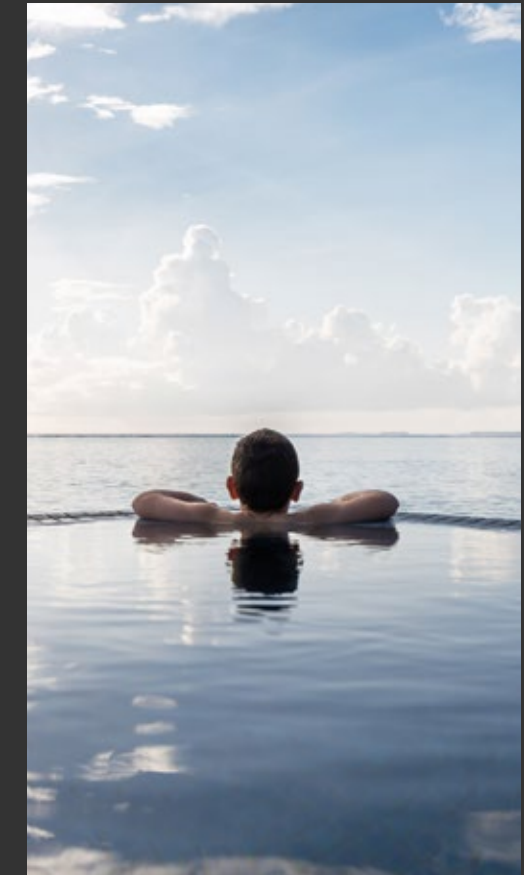
*CONNECTIVITY*



*BALANCE*



*LONGEVITY*



*HORIZON*

LEVEL 4

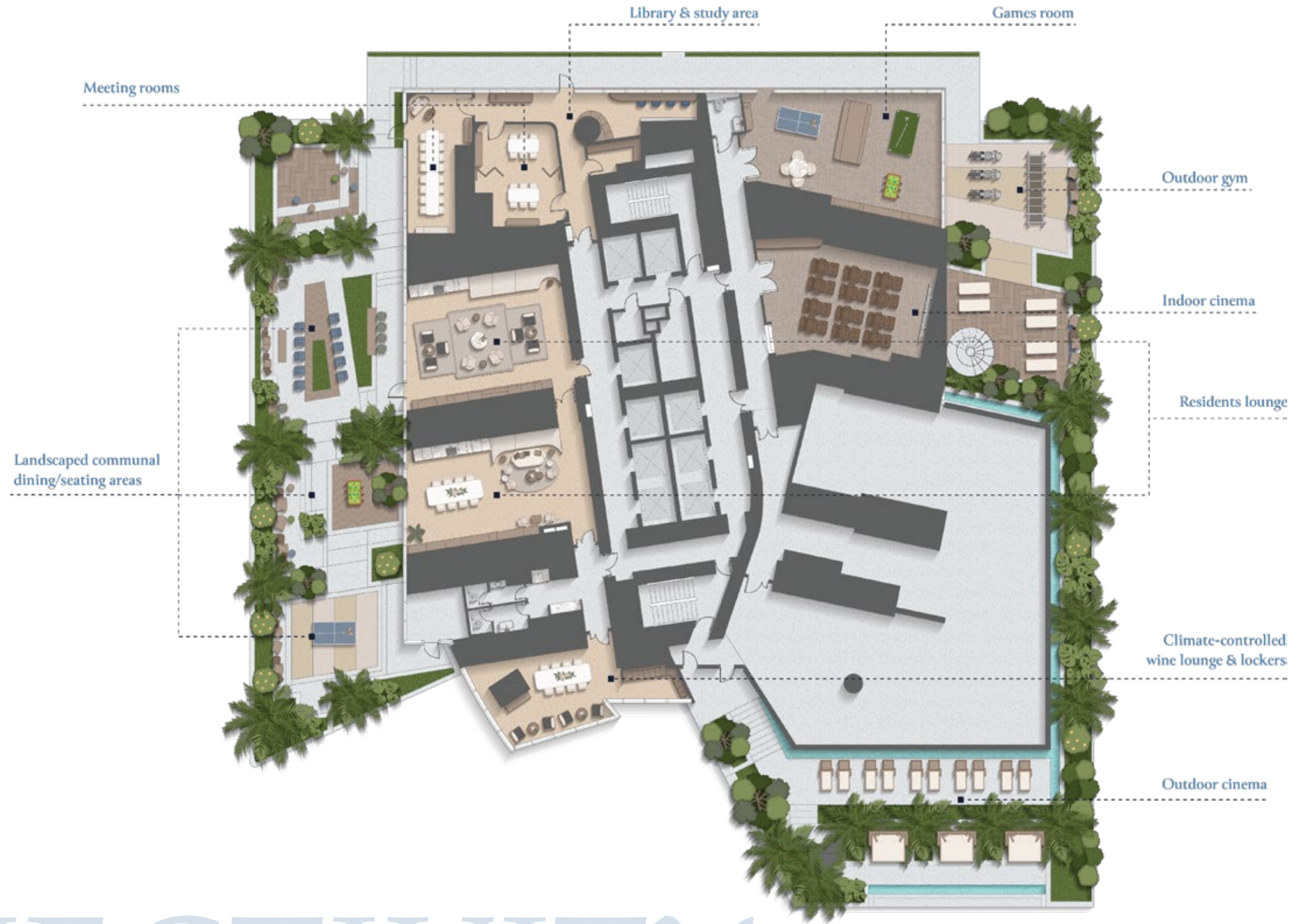
# CONNECTIVITY

A harmonious blend of work and play, the 'Connectivity' level embodies a hive of interaction that seamlessly combines productivity and leisure with a strong sense of community.





Showcasing diverse entertainment options, social spaces and dedicated work areas, the 'Connectivity' level is a central hub where residents gather to collaborate and socialize in a dynamic ecosystem that effortlessly integrates indoor and outdoor areas, promoting engagement and meaningful connections.



# CONNECTIVITY

LEVEL 5

# BALANCE

Where peace and physical well-being meet in perfect alignment, the 'Balance' level is meticulously curated to offer you an all-encompassing fitness and wellness journey.

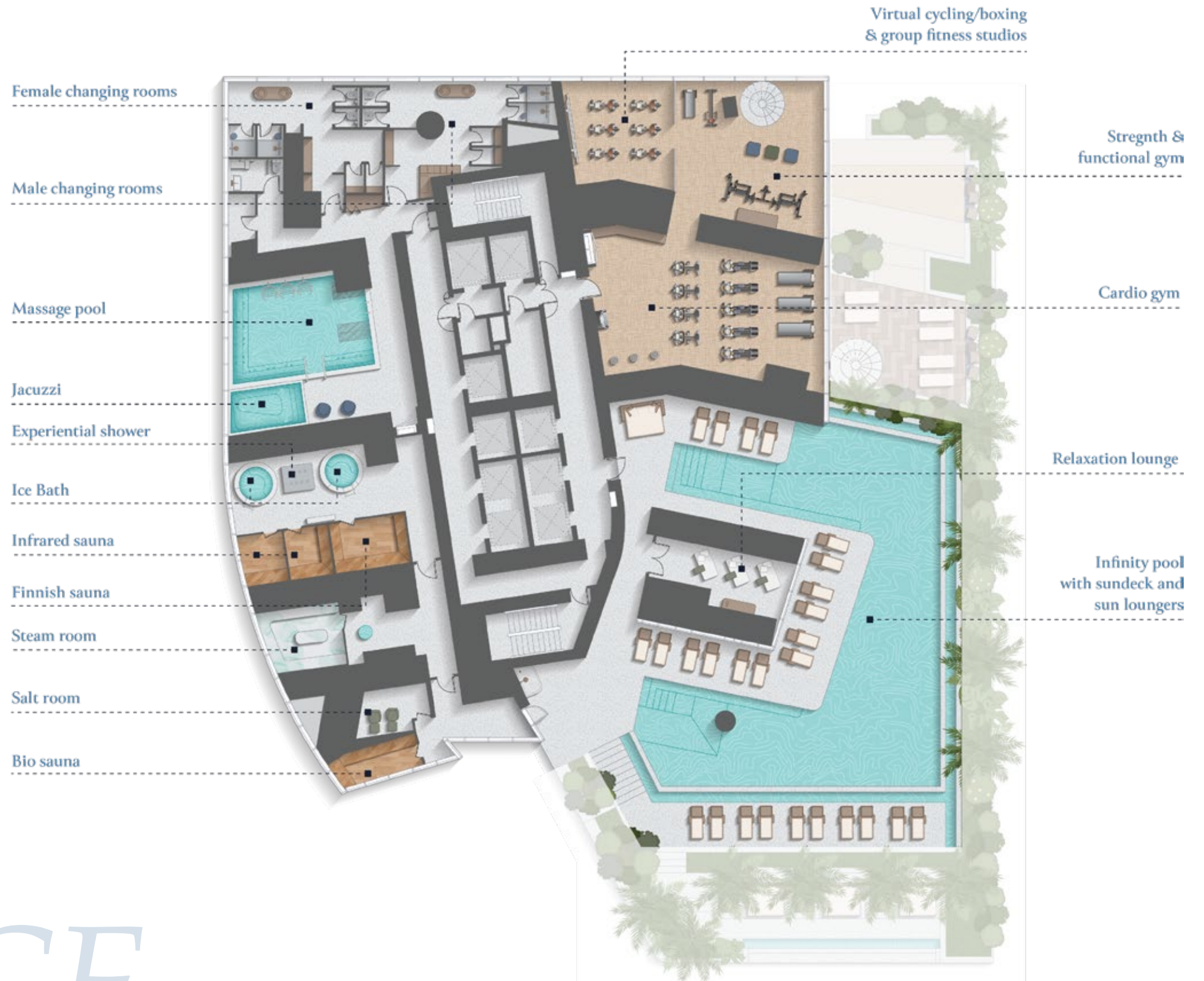
Embark on the ultimate spa retreat in the serene wet areas where a variety of hydrotherapy options await, including massage pools, plunge pools, and a jacuzzi. Alternatively, rest and relax in the infrared, bio and Finnish saunas, as well as a steam room.



Elevate your exercise regimen with a dynamic workout experience at the cardio, strength and functional training gymnasium, leaving you feeling energized and empowered.

Unwind and detoxify in the salt room, where the healing properties of salt promote respiratory health and relaxation.

Complete your experience by soaking in the sunshine at the pool deck while savoring the pristine waters of the infinity pool.



# BALANCE



LEVEL 6

# LONGEVITY

Whether you seek relaxation, revitalization, or a moment of respite, the 'Longevity' level invites you to unwind and replenish in blissful surroundings.

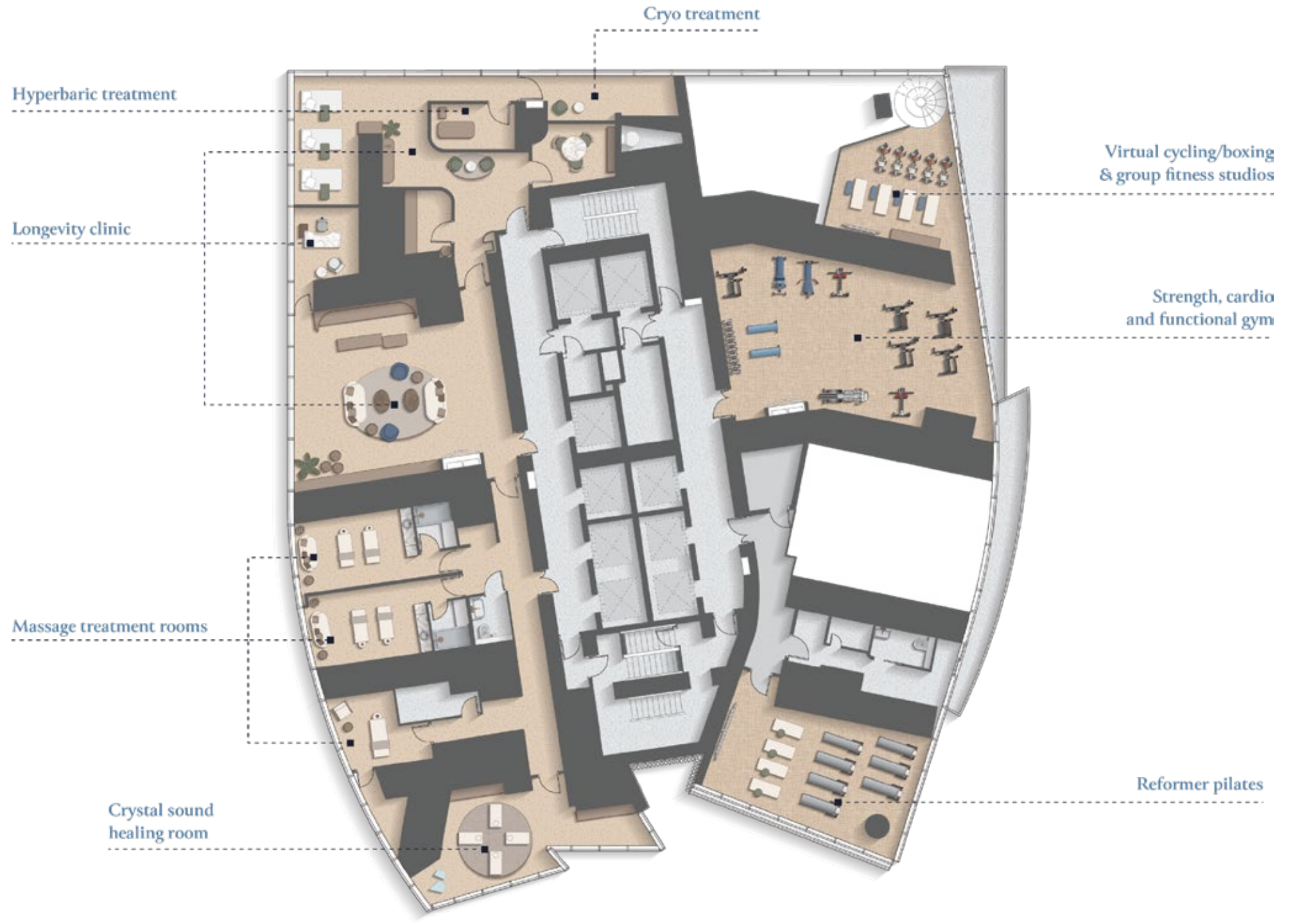
Begin your visit with a rejuvenating session at the crystal sound healing room, where tranquil melodies meld together to restore your inner peace.

Indulge in a myriad of revitalizing experiences tailored to enhance your overall well-being, from personalized treatments at the Longevity clinic to therapeutic relaxation at the massage suites.



Residents can delve into the latest wellness technology at the cryo and hyperbaric therapy chambers, designed to enhance recovery and promote overall vitality.

Discover high-tech cardio and strength training equipment in the advanced gym facility, which provides everything you need to achieve your fitness goals. Alternatively, engage in an immersive workout experience at the virtual cycling/boxing and group fitness studios.



# LONGEVITY

LEVEL 109

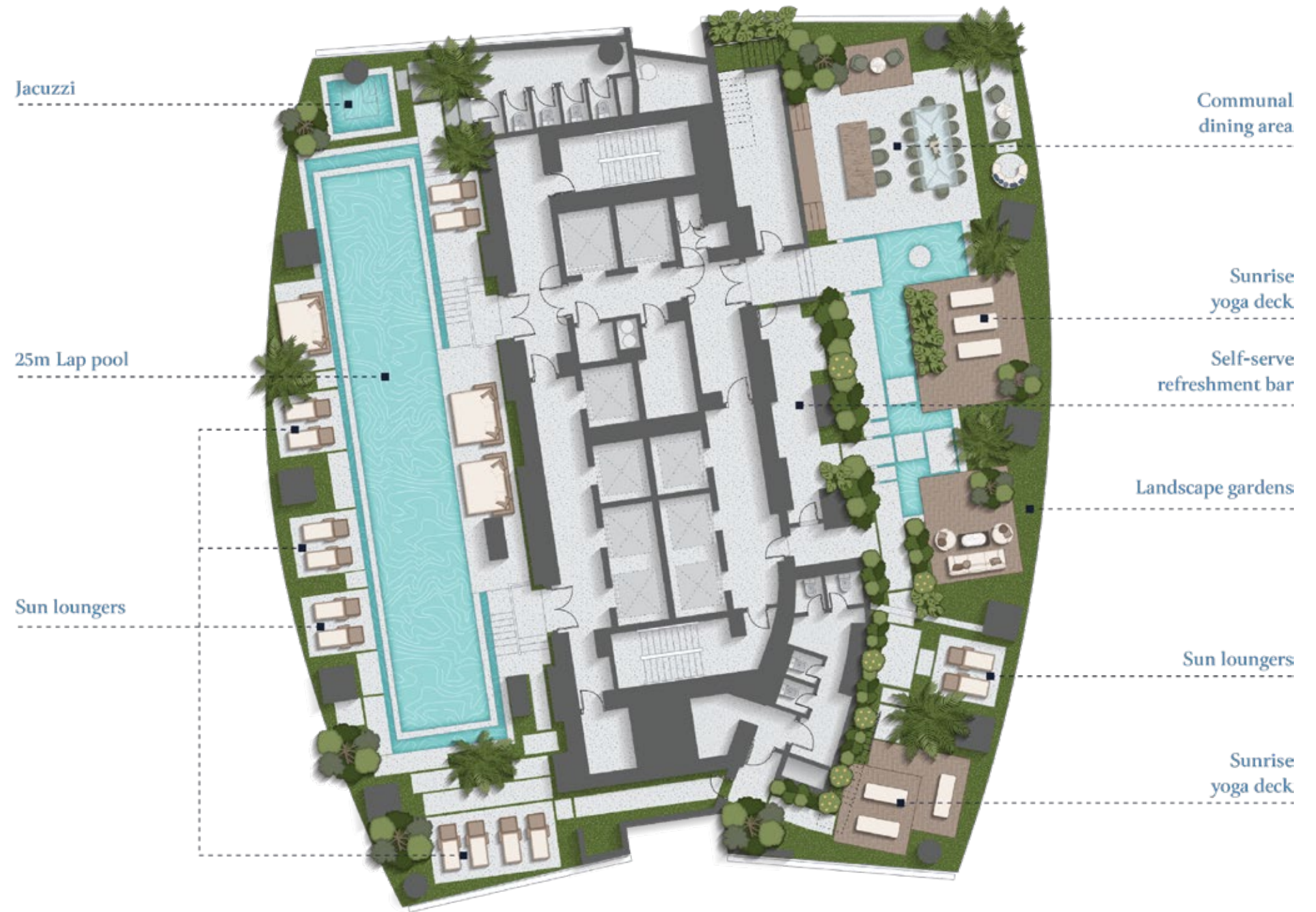
# HORIZON

Step into a realm of remarkable refinement at the 'Horizon' level, perched on the 109th floor, where every aspect is designed to provide residents with an extraordinary retreat amidst the vibrant cityscape.

The pool lounge beckons with its inviting charm as you immerse yourself in an ambience of serenity and sophistication. Sink into plush loungers whilst soaking in the breathtaking views of Dubai Marina and Palm Jumeirah.



Whether indulging in leisure activities or entertaining guests, residents will find themselves immersed in a world of luxury amenities. From taking a dip in the 25m lap pool to exploring landscaped gardens or hosting gatherings at the communal dining areas, the 'Horizon' level is the ultimate refuge.



# HORIZON







# EXCLUSIVE OWNER BENEFITS & SERVICES

As an owner of Six Senses Residences Dubai Marina, you're a valued member of an exclusive community that prioritises your comfort, convenience, and well-being.

## OWNER BENEFITS

- Dedicated residence general manager
- 24/7 Concierge and lifestyle services
- Housekeeping, maintenance, and security (common areas)
- Valet and door services
- Residential portal
- Six Senses branded touchpoints





## A LA CARTE SERVICES:

- Airport meet and greet/transfer services
- Limousine services
- Housekeeping services
- Floral arrangements
- Maintenance and repairs
- Business centre essential services
- Private fitness trainers and yoga classes
- Internet and IT support
- Plant care in residence
- Personal shoppers
- Amenities and pre-arrival set-up
- Dry cleaning, laundry, and ironing services
- Daily housekeeping and vacant care
- Private Chef
- Grocery and provision services
- Nanny and childcare services
- Private tours, activities, and excursions
- In-residence spa treatment
- Private event planning and catering
- Private valet services
- Butler services
- Beauty, hair, grooming and nail services
- Pet services
- Wine purchasing services
- Nurse consultation and medical assistance
- Bicycle hire
- Auto grooming services
- Personal security
- Juice Bar refreshments (Fitness area)
- Six Senses spa treatments, massages and selected wellness programs

*Note: A-la-Carte services may be performed by specialized approved third-party service providers*

## BRAND BENEFITS

- Applicable promotional rates at Six Senses properties worldwide



- Two years IHG Diamond Status for first-time buyers directly with Select Group

As an IHG Diamond member, Six Senses private homeowners will enjoy benefits when staying at IHG properties such as:

- Complimentary breakfast
- 100% IHG bonus points
- Room upgrades up to standard suites (subject to availability)
- Early check-in and late check-out (subject to availability)
- Dedicated customer support





Founded in 2002, Select Group is a dynamic and diverse corporation with premium property development at its core.

Select Group operates a portfolio of investments in various sectors across the Middle East, the United Kingdom and Europe, supported by a global talent pool of over 750 employees.

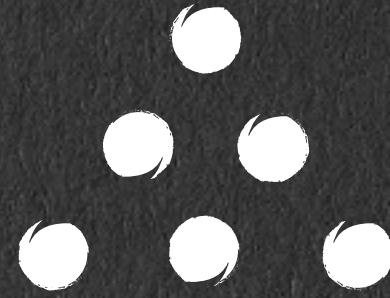
Select Group's development portfolio comprises over 20 million square feet of award-winning residential, commercial, hospitality and retail developments, delivering over 7,000 homes, with another 5,000 units in the pipeline, a combined Gross Development Value (GDV) of over AED 20 billion.

Diversification has been a critical strategy for sustainable growth for Select Group with several other investment ventures within the fitness, wellness, technology and asset management sectors.

# DEVELOPMENT TIMELINE

52 Avenue Road	London, UK	Under Development	2023
The EDGE	Dubai, UAE	Under Development	
Nautica	Dubai, UAE	Under Development	
Six Senses Residences The Palm, Dubai	Dubai, UAE	Under Development	2022
Jumeirah Living Business Bay	Dubai, UAE	Under Development	
Peninsula Four, The Plaza	Dubai, UAE	Under Development	
Peninsula Three	Dubai, UAE	Under Development	
Velocity Tower	London, UK		
15 Northside	Dubai, UAE		2021
98 Baker Street	London, UK		
Echo Building	Liverpool, UK		
Peninsula One	Dubai, UAE	Under Development	
Peninsula Two	Dubai, UAE	Under Development	
Peninsula Five, The Signature Collection	Dubai, UAE	Under Development	
Jumeirah Living Marina Gate	Dubai, UAE		2020
Niu Air	Frankfurt, Germany		
Studio One	Dubai, UAE		2019
Marina Gate II	Dubai, UAE		
Ibis Hotel	Sheffield, UK		
Marina Gate I	Dubai, UAE		2018
No. 9	Dubai, UAE		
The Hive	Dubai, UAE		
Pacific	Ras Al Khaimah, UAE		2017
Ballochmyle Estate	Scotland, UK		2016
InterContinental Dubai Marina	Dubai, UAE		2015
Alexandra Tower	Liverpool, UK		
Radisson Blu Hotel	Birmingham, UK		
Velocity Tower	Sheffield, UK		
West Avenue	Dubai, UAE		2014
Nottingham One	Nottingham, UK		
Bay Central	Dubai, UAE		2012
Botanica	Dubai, UAE		2011
The Torch	Dubai, UAE		
The Point	Dubai, UAE		2009
Royal Oceanic	Dubai, UAE		
Yacht Bay	Dubai, UAE		2007
SELECT GROUP	Dubai, UAE		2002

WE ARE HUMAN  
LIVE & INVEST



# SIX SENSES RESIDENCES

DUBAI MARINA

a development by



Select Global Development LLC ("Developer"), at its sole discretion or as required by local or other authorities, may make alterations to the internal design of the residences at Six Senses Residences Dubai Marina ("Residences", and each a "Residence") that may differ from that shown in this document and/or represented in any other marketing materials and/or displays including, but without limitation, to any advertising, marketing and/or sales concepts, programs or materials, or any other content to be posted on any website maintained by Developer. Residence designs and materials presented herein are representative of the intended end product. Actual constructed Residence may vary in materials and furnishings.

Select Focus Ltd ("Owner") is the current owner of the land upon which the Residences are to be developed and Developer is solely responsible for the development, marketing and sale of the Residences. The Residences are not owned, developed or sold by Sustainable Luxury UK Limited ("Licensor"), InterContinental Hotels Group PLC, InterContinental Hotels Group (Asia Pacific) Pte. Ltd. or any of their affiliates (collectively "Six Senses"). There exists no joint venture, partnership, ownership or similar relationship between Owner and Developer, on the one hand, and Six Senses on the other. Six Senses does not make any representations or guarantees of any kind or nature, including without limitation, as to expected or guaranteed rental return.

Licensor is the owner of the "Six Senses" brand that is to be associated with the Residences, and the usage of the name "Six Senses" and related marks is strictly governed by certain agreements between Developer and Six Senses. The "Six Senses" name, design, logomarks, trademarks and related marks are the exclusive properties of Six Senses and they are not owned or controlled by Owner or Developer. The purchasers or owners of the Residences shall acquire no interest of any kind or nature in the "Six Senses" brand, logomarks or related trademarks and may not use them in connection with the resale of any Residence or for any other purpose. Licensor's agreement to associate the "Six Senses" brand with the Residences is not in perpetuity and may end at any time without notice to or consent of purchasers or owners of the Residences, in which event the "Six Senses" brand will be disassociated from the Residences and the Residences and no reference to the "Six Senses" brand shall be applied to the Residences.

In addition, by consenting to Owner's and Developer's limited use of Six Senses' trade and logo marks in relation to the sale of Residences or the display of the Six Senses' trade and logo marks in the Residences, Six Senses does not make any representation or warranty, express or implied, as to the accuracy, currency, reliability or completeness of the information in this document and Six Senses is not responsible or liable in any way whatsoever for any claim, loss or damage arising out of or related to information set out in this document.

The design concepts for the model Residences at the Six Senses Residences, Dubai Marina, including all loose furnishings and certain fixtures and finishes, were solely and entirely conceived by the participating designers appointed by Select Focus Ltd and/or Select Global Development LLC. Sustainable Luxury UK Limited, InterContinental Hotels Group PLC, InterContinental Hotels Group (Asia Pacific) Pte. Ltd. or any of their affiliates (collectively "Six Senses") were not involved in developing the design concepts or selecting such furnishings, fixtures and finishes for the Residences and make no representations that they are consistent with the image, quality, design standards and expectations of the "Six Senses" brand.