

WE ARE HUMAN
LIVE & INVEST



**THE RITZ-CARLTON
RESIDENCES**

DUBAI, CREEKSIDE



EARTH
MANSION

— FACT SHEET —

Keturah Resort is more than a destination, it is an awakening into a new experiential level of luxury, which brings with it the realization that the true measure of success is peace of mind, and our physical, mental and emotional wellbeing are part of this equation.

The Ritz-Carlton Residences located at Keturah Resort is the **FIRST FULLY WELLNESS CERTIFIED RESORT** in the MENA region.

It is one of the most prestigious and outstanding developments of Dubai. Meticulously designed, crafted and envisioned by the developer in pursuit of excellence. Over the past years careful planning, refining and perfecting of the design and craftsmanship has allowed Keturah Resort to mature to something never before seen in Dubai.

where

the weathth of wellbeing

resides



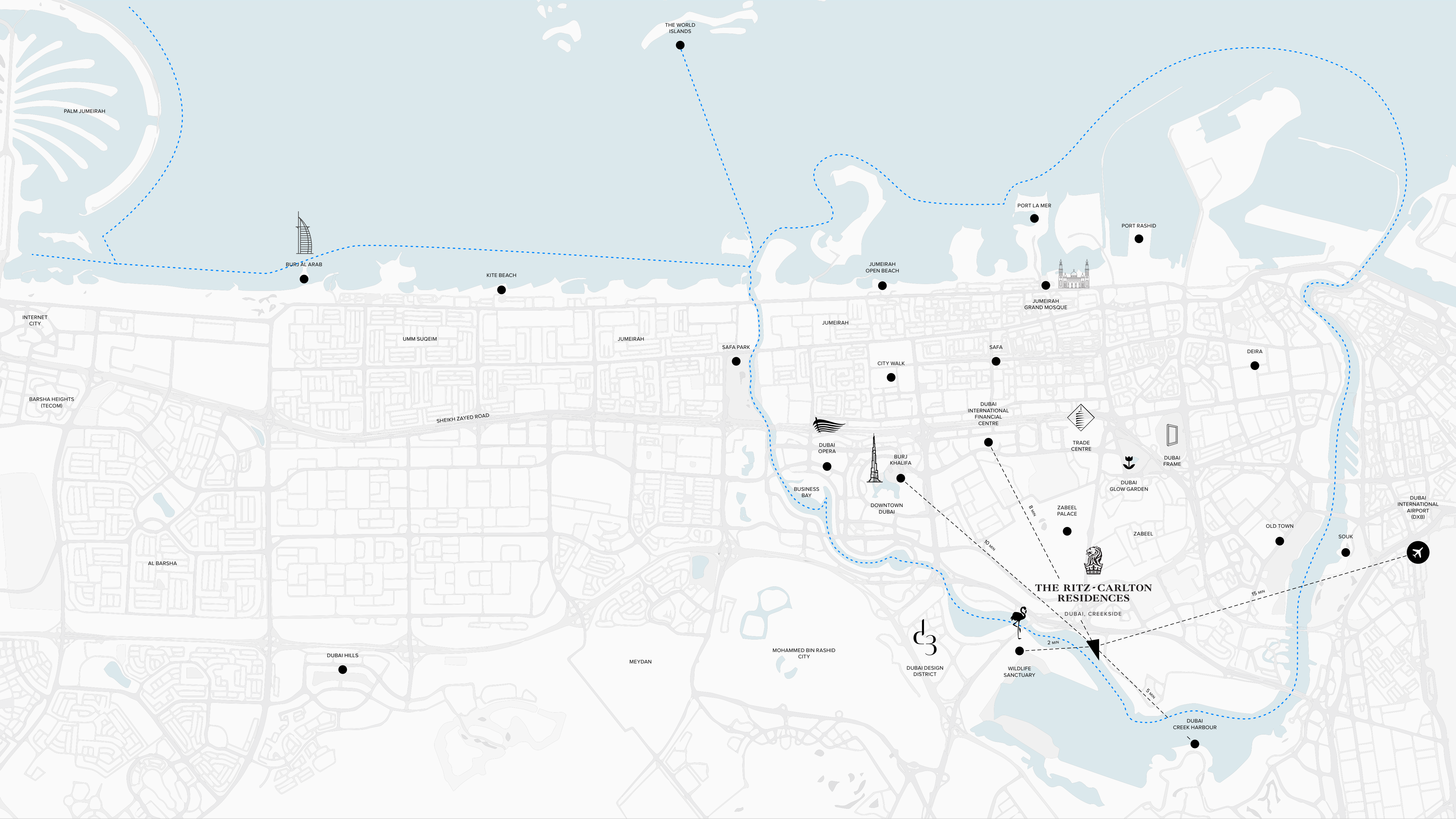
**THE RITZ - CARLTON
RESIDENCES**

DUBAI, CREEKSIDE

TABLE OF

Contents

- Location Map
 - Wind Study
 - Sun Study
- Master Plan
 - The Views
 - Waterfront Living
- Earth Mansion *'The Element of Stability'*
- Inspiration
- Concept Mood Board
- Concept Development
- The Facades Mood Board
- Facade Sketch
- 2D Illustration
 - 'North' & 'South' Facades
 - 'East' Facade
- Facade 3D Render
- Earth Patio Inspiration
- The Interior (Selection)
- Brands' List
- Residential Wellness Design
- Delos™ Pathways to Health and Happiness
- Landscape Mood Board
- Landscape Concept
- Earth Mansion Designated Plots
- Floor Plans
- By the Numbers
 - General Information
 - Rooms Details / Floor
- Amenities and Facilities
- Residential and À La Carte Services
- Collaborations List



PALM JUMEIRAH

THE WORLD ISLANDS

BURJ AL ARAB

KITE BEACH

PORT LA MER

PORT RASHID

JUMEIRAH OPEN BEACH

JUMEIRAH GRAND MOSQUE

INTERNET CITY

UMM SUGEIM

JUMEIRAH

SAFA PARK

JUMEIRAH

CITY WALK

SAFA

DEIRA

BARSHA HEIGHTS (TECOM)

SHEIKH ZAYED ROAD

DUBAI OPERA

BURJ KHALIFA

DUBAI INTERNATIONAL FINANCIAL CENTRE

TRADE CENTRE

DUBAI FRAME

DUBAI GLOW GARDEN

DUBAI INTERNATIONAL AIRPORT (DXB)

BUSINESS BAY

DOWNTOWN DUBAI

ZABEEL PALACE

ZABEEL

OLD TOWN

SOUK

AL BARSHA

DUBAI HILLS

MEYDAN

MOHAMMED BIN RASHID CITY

DUBAI DESIGN DISTRICT

WILDLIFE SANCTUARY

THE RITZ-CARLTON RESIDENCES
DUBAI, CREEKSIDE

DUBAI CREEK HARBOUR

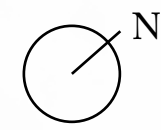
8 MIN

10 MIN

2 MIN

5 MIN

15 MIN

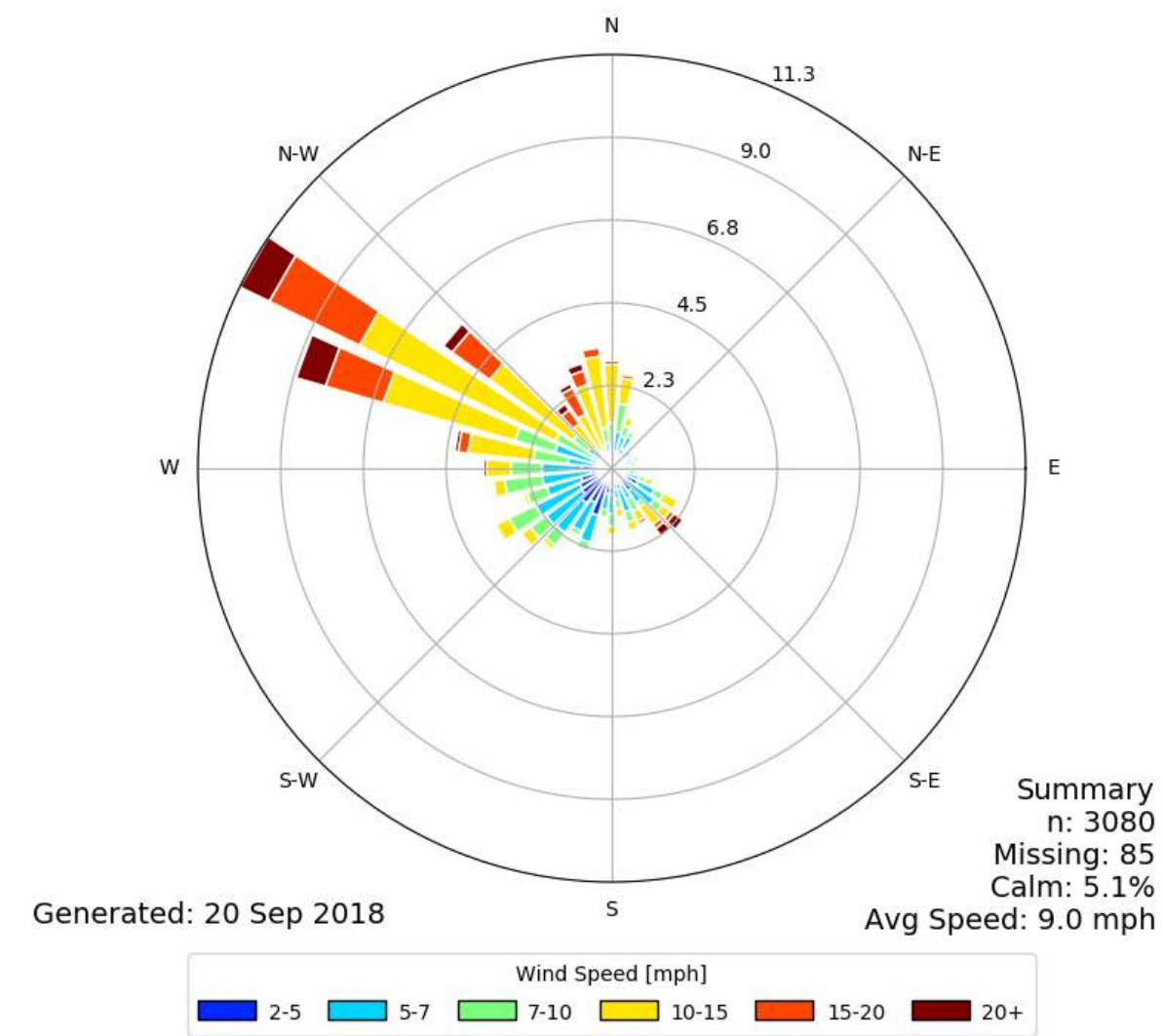


WELLNESS SITE ANALYSIS

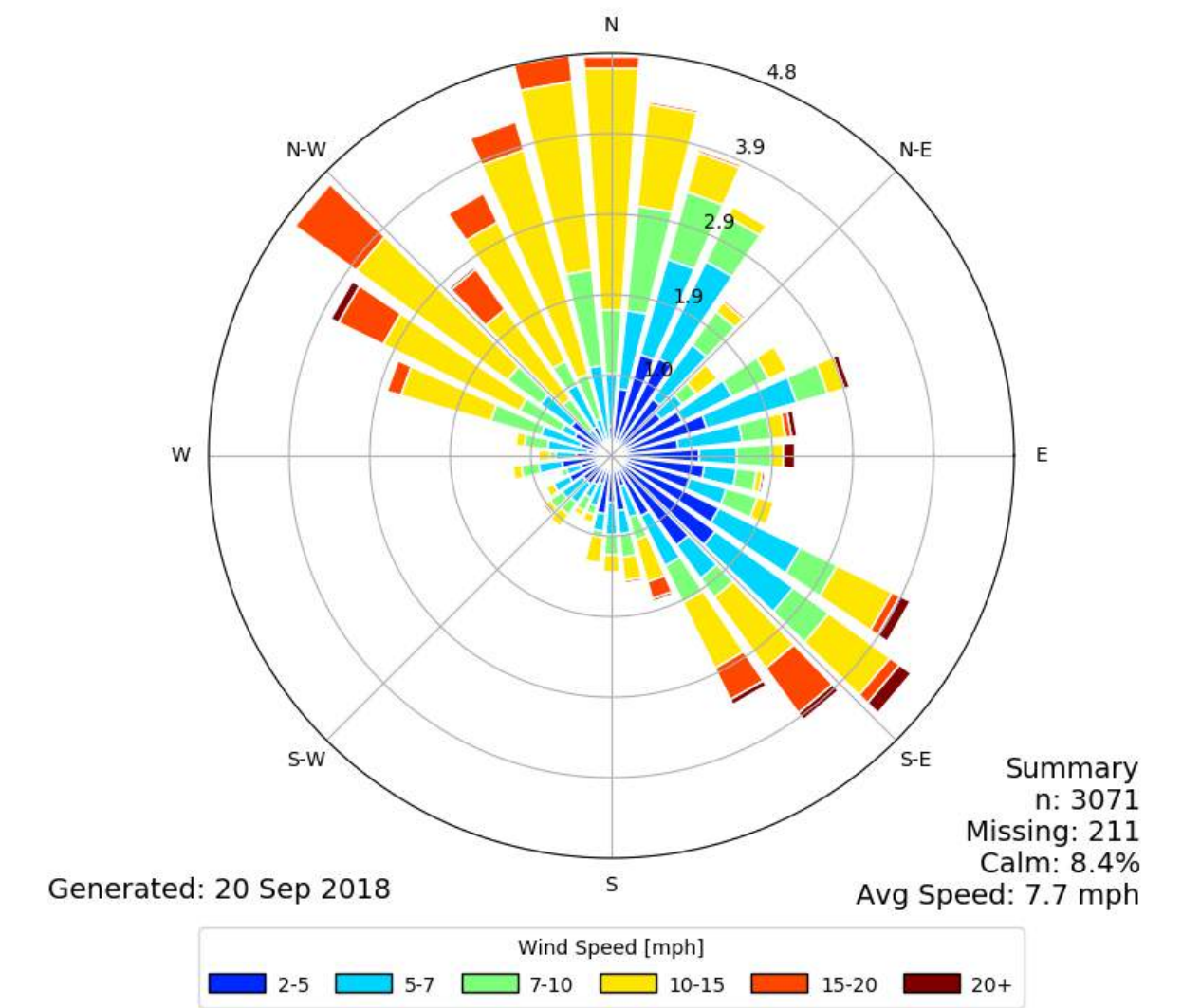
Wind Study

The wind is coming with most frequency and intensity from the Creek Side situated south from the site. The building volume is following the same direction so the air flows around most of the facades and blows the surface heating away.

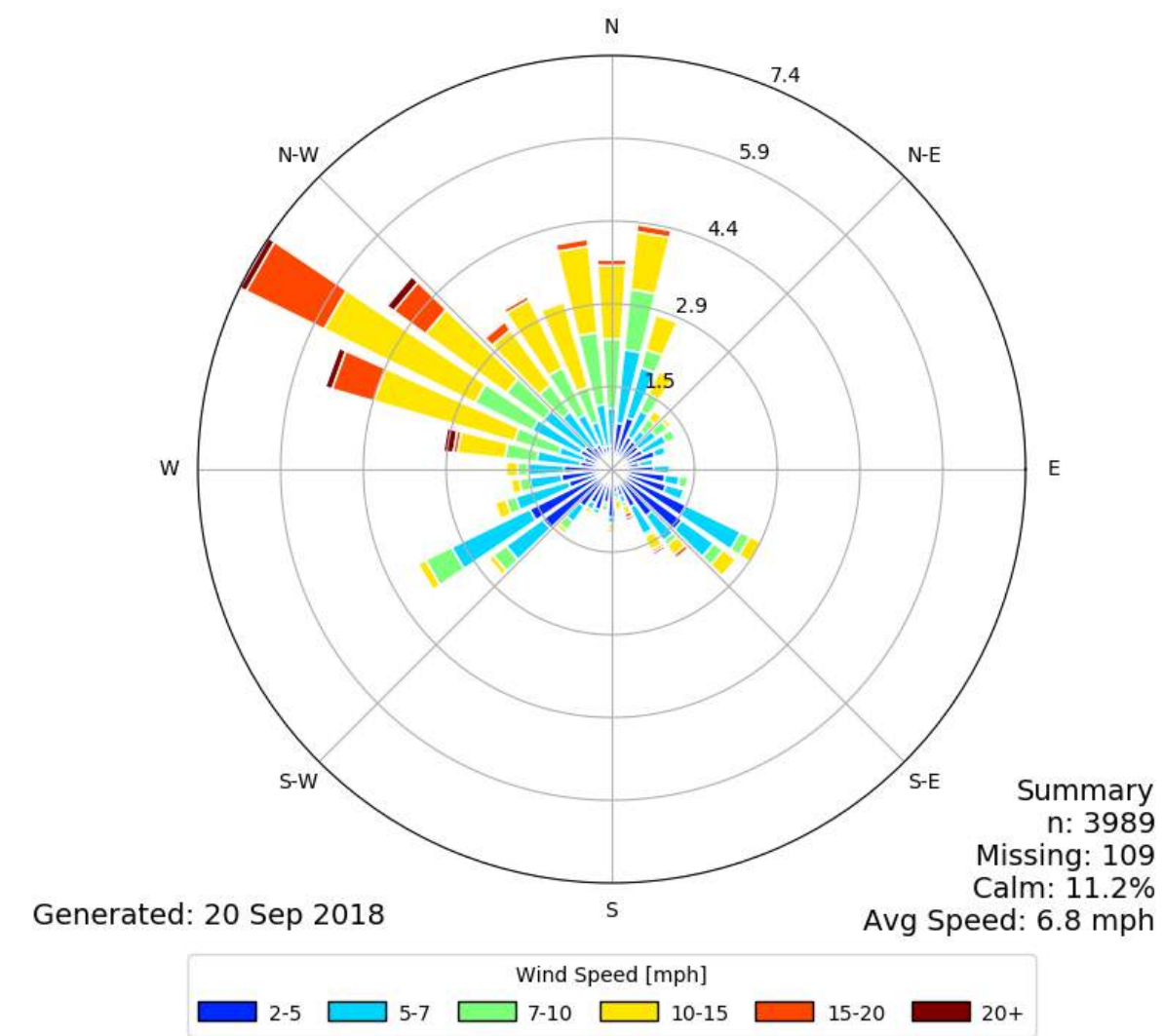
[QGX] AL DHAFRA
Windrose Plot [Time Domain: Jun,]
Period of Record: 07 Jun 2010 - 01 Jul 2015



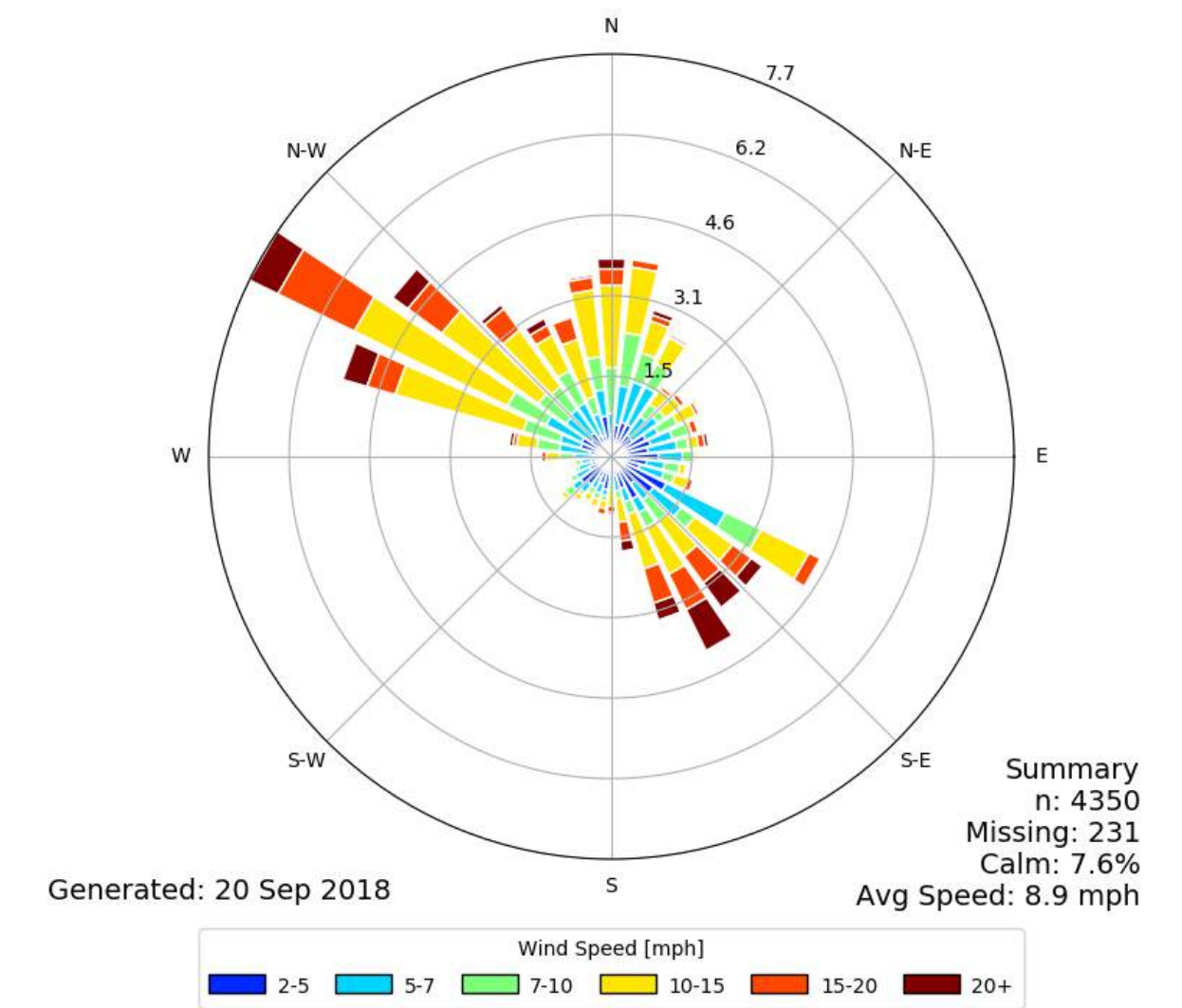
[QGX] AL DHAFRA
Windrose Plot [Time Domain: Sep,]
Period of Record: 01 Sep 2010 - 01 Oct 2015

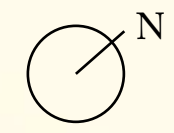


[QGX] AL DHAFRA
Windrose Plot [Time Domain: Dec,]
Period of Record: 02 Dec 2010 - 01 Jan 2016



[QGX] AL DHAFRA
Windrose Plot [Time Domain: Mar,]
Period of Record: 01 Mar 2011 - 31 Mar 2016





WELLNESS SITE ANALYSIS

Sun Study

The sun behavior is carefully analyzed in its path, orientation and height, and the architecture is adjusted in order to allow most natural light without reaching overheating

8 am

12 am

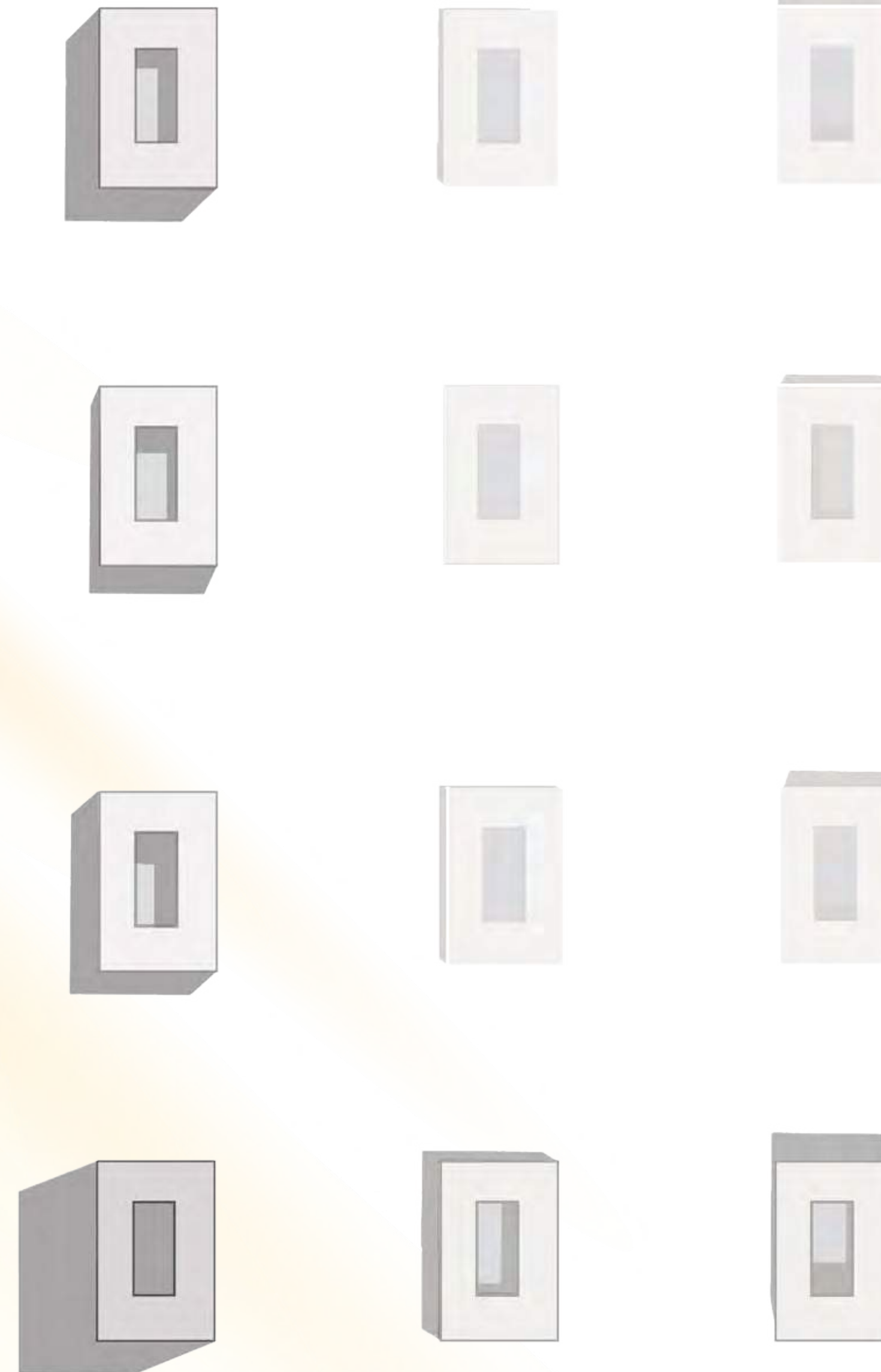
4 pm

SPRING

SUMMER

AUTUMN

WINTER





SUNSET

SUNRISE

DOWNTOWN
DUBAI

WILDLIFE
SANCTUARY

CREEK
VIEW

DUBAI CREEK
HARBOUR



ONE-OF-A-KIND

Waterfront Living

Lapped by the gentle rhythms of turquoise waters, and sitting gracefully on the shores of the Dubai Creek, the Ritz-Carlton Residences offer more than waterfront living. The resort is a landmark of luxury, wellness and craftsmanship.

On the backdrop of the iconic Dubai skyline, the Ritz-Carlton Residences are nestled in the quiet natural beauty of Ras El Khor Nature Reserve, where breath-taking views of mangroves await, along with an air rich with naturally high levels of oxygen. The sanctuary allows you to become infused with wellness on all levels.

Offering a peaceful refuge from one of the most vibrant and forward thinking cities in the world, you can conveniently reach the vibrant downtown area (4.5 km) within minutes by car, boat or via the boardwalk with its running and biking trail.

THE ELEMENT OF

Stability

Earth is the element of stability, groundedness, fertility, materiality, potential, and stillness. Earth can also be an element of beginnings and endings, as life comes from the ground and then goes back into the earth.





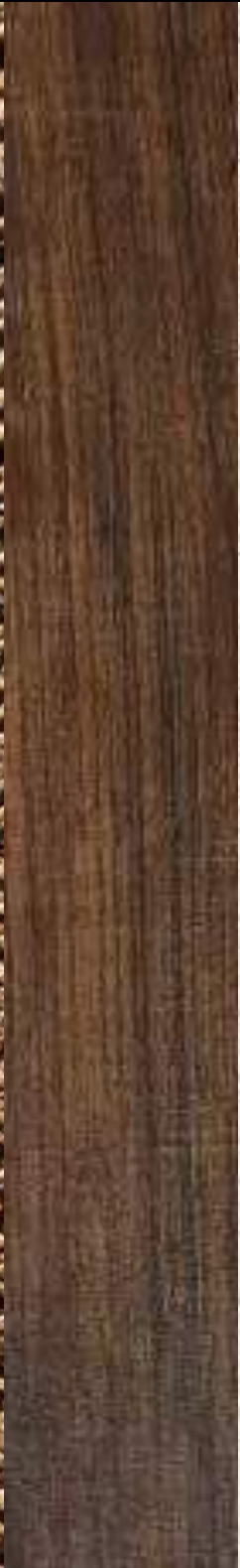
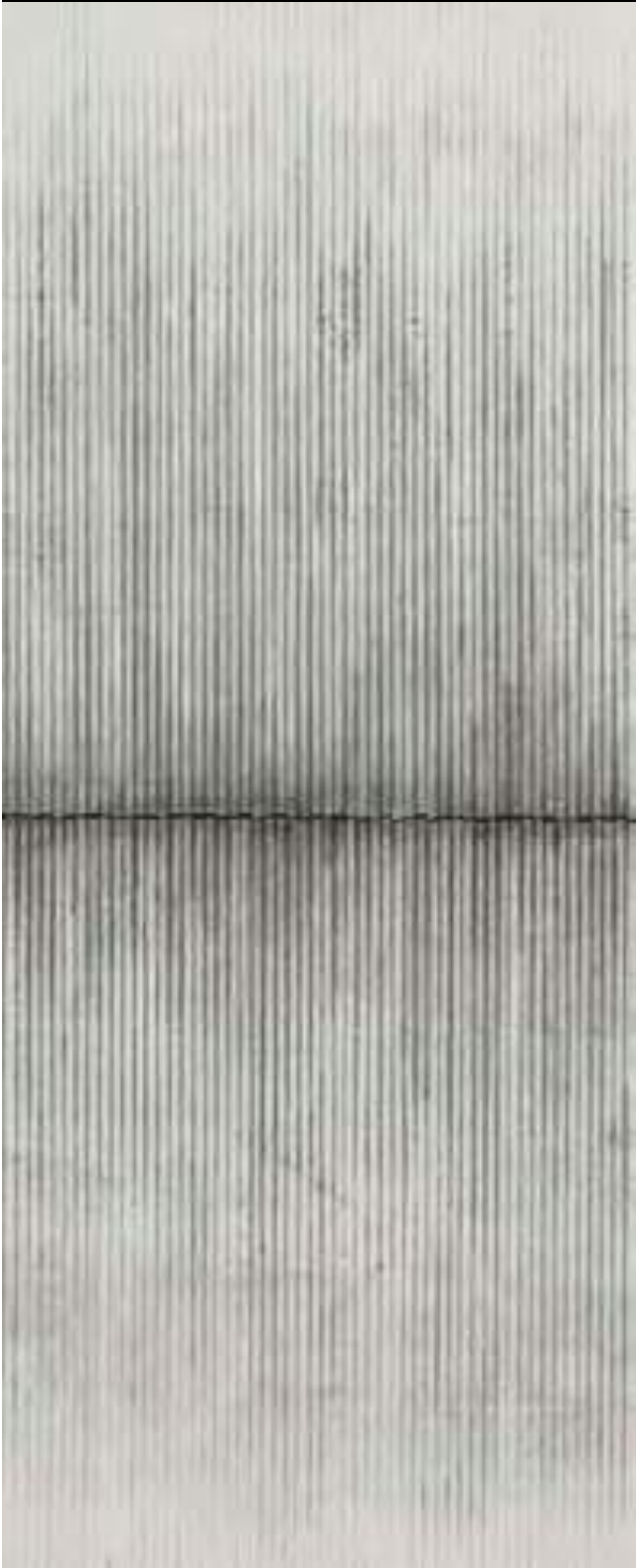
Inspiration

The Earth Mansion is a unique waterfront project with stunning panoramic views that overlook the Dubai Creekside, the Ras Al Khor Wildlife Sanctuary, and Downtown Dubai.

Architecture and the environment combine seamlessly to create a grounded yet energizing atmosphere throughout the home.

Concept

MOOD BOARD



ORGANIC

GRAVITY TIME

SEDIMENTATION

NATURE

MOMENT

FIXED

WARM

BRUT

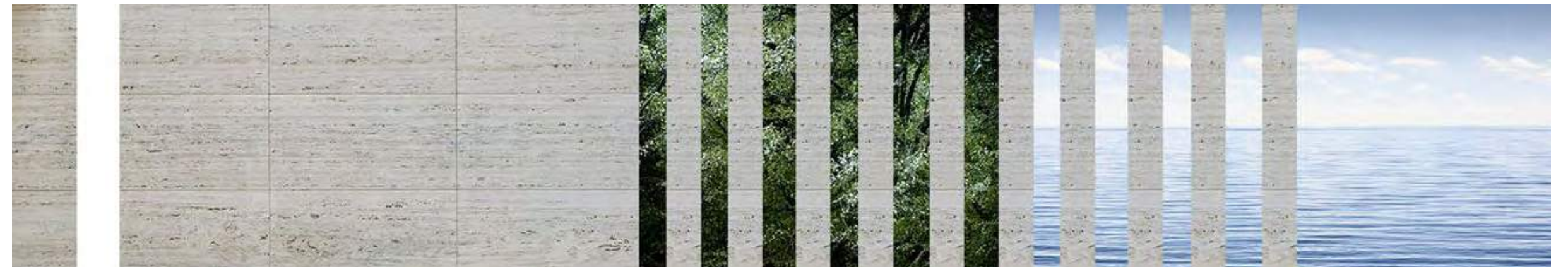
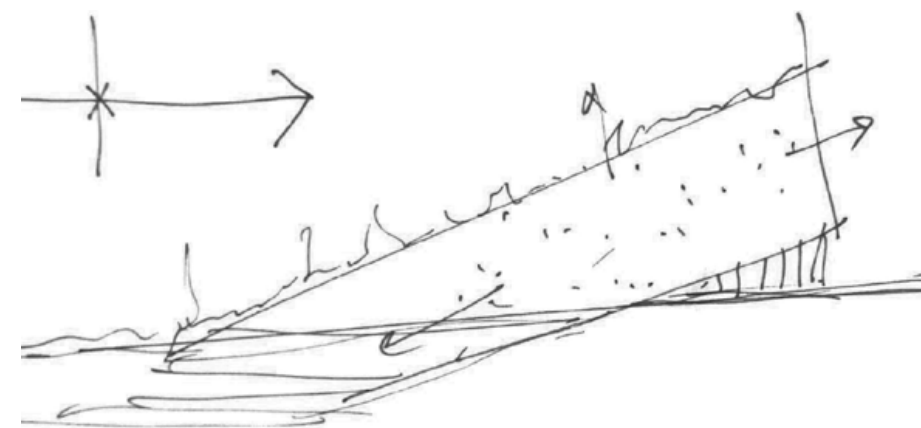
SCULPTURE

Concept

The minimalist architecture composes a space that is in constant dialogue with its surroundings, hidden from the street, yet open wide toward the astonishing water view.

Floor-to-ceiling sliding glass allows for expansive views, seamlessly merging the patio and living rooms to transform into one wide reception area when open.

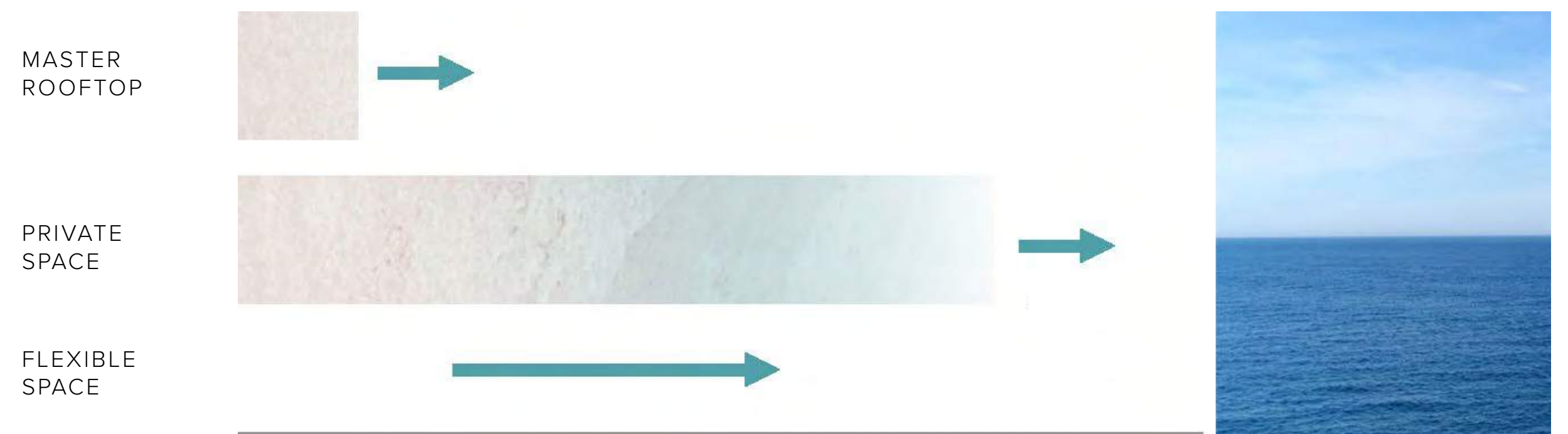
The beautiful waterfront views are elegantly framed from the moment they are seen from the lobby. The elegance extends throughout The Earth Mansion, designed as a harmonious space facing the creekside.



CONCEPTUAL ELEVATION



CONCEPTUAL PLAN
MINERAL TO WATER



The Facades

MOOD BOARD



LIVING SPACES

SLIDING WINDOWS
GLASS

LIVING SPACES

SLIDING PANELS
WOOD

FAMILY PRIVATE SPACE

STONE LOUVERS
WHITE TRAVERTINO

GF FACADE

MARBEL
GREEN ALPI

FLOOR

STONE
WHITE TRAVERTINO

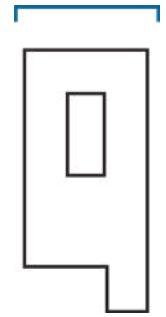
DETAILS

METAL
BRUSHED BRASS

FACADE

STONE
WHITE TRAVERTINO





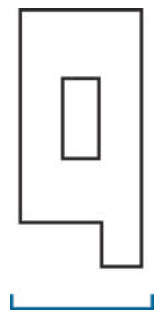
THE SOUTH
FACADE



The Facades

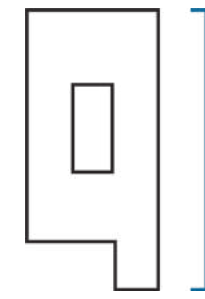
PURE MINIMALIST ARCHITECTURE

THE NORTH
FACADE



The Facades

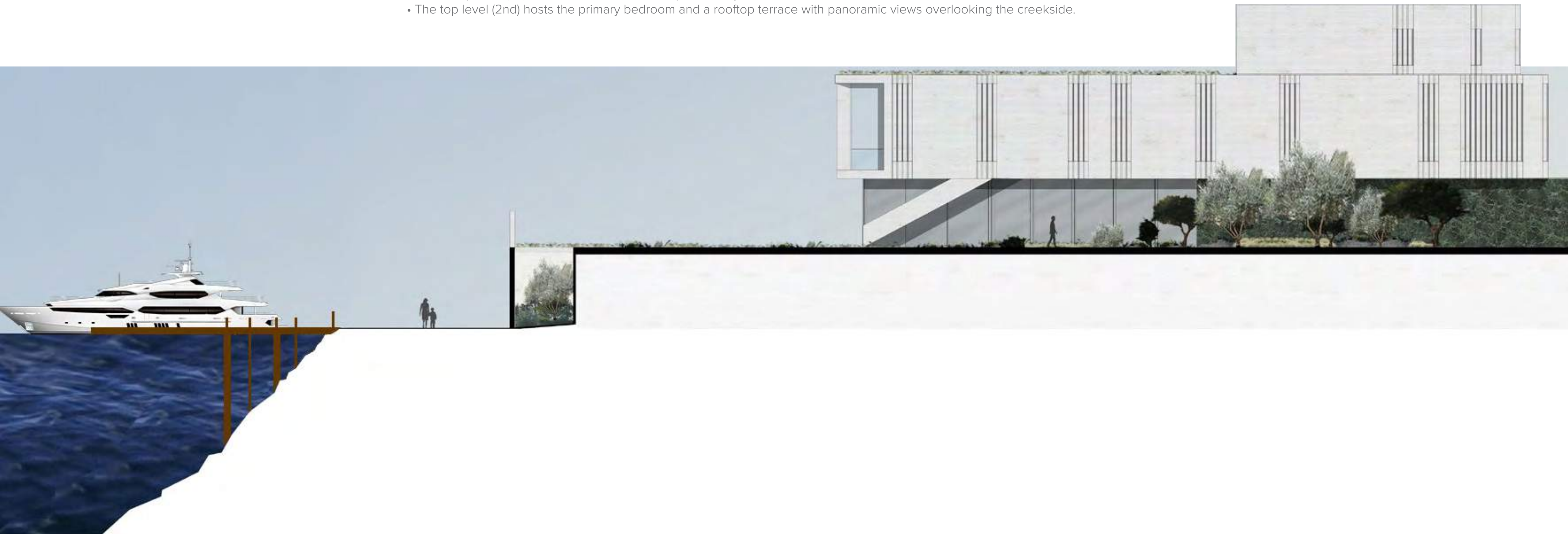
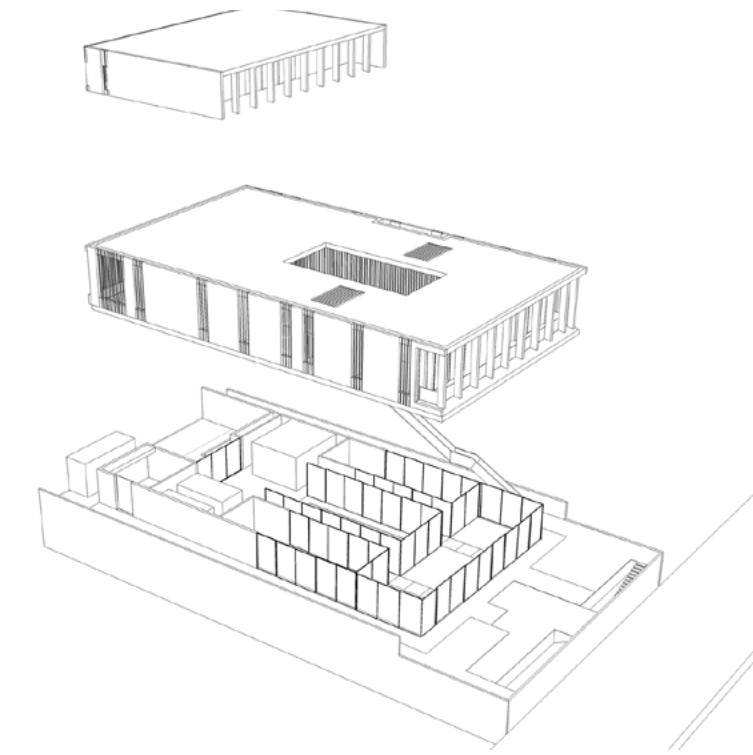
THE EAST FACADE



The architectural design provides various private and communal spaces throughout The Mansion.

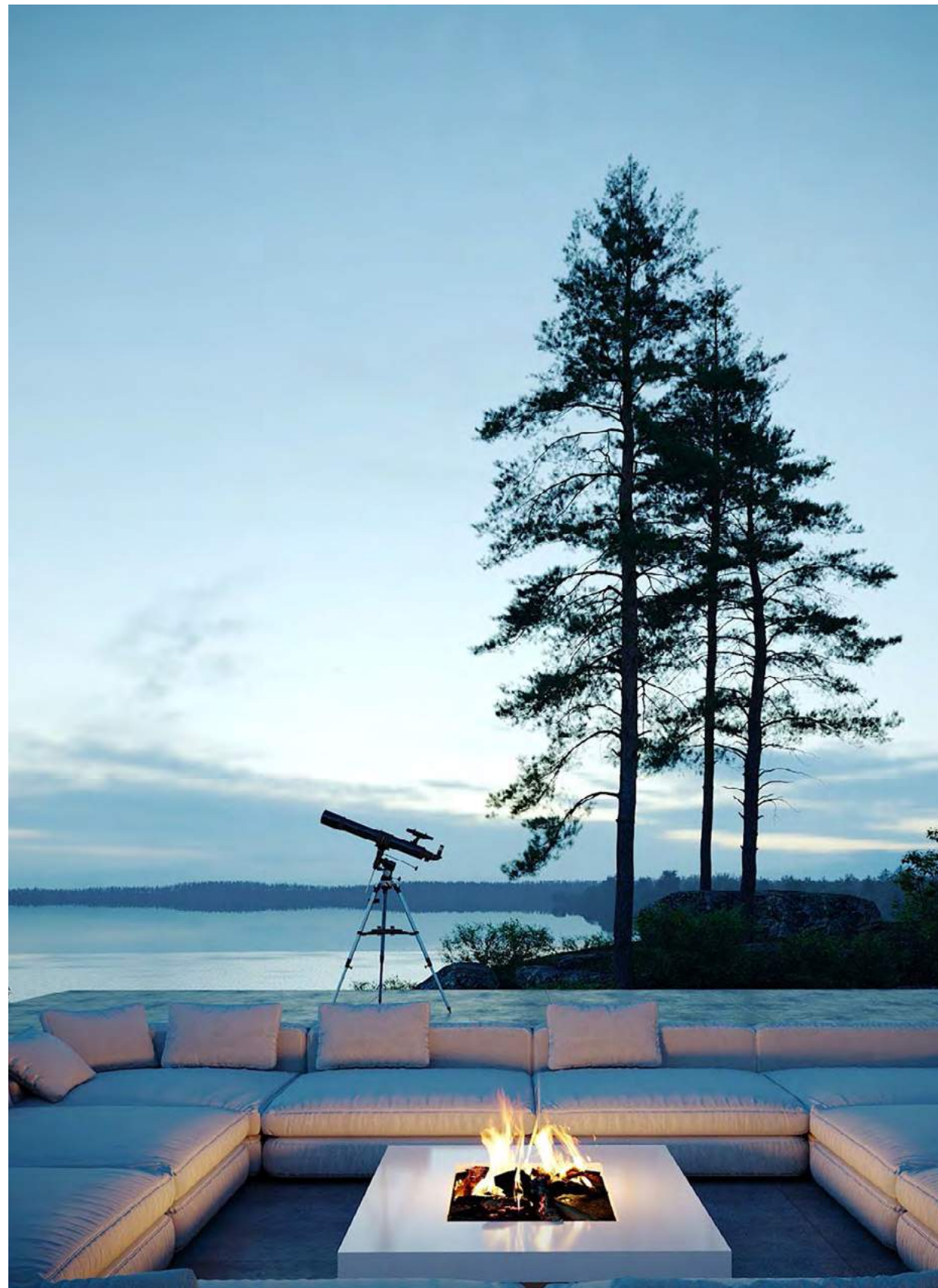
The project is divided into four different main spaces:

- The basement level (B) includes a terrace, family living area, gym, spa, cinema, and parking garage.
- The patio level (GF) holds the main living/reception spaces and the pool.
- The family level (1st) allows for complete privacy, including six ensuite bedrooms
- The top level (2nd) hosts the primary bedroom and a rooftop terrace with panoramic views overlooking the creekside.





This drawing is an artistic interpretation of the design. It is not meant to be an exact rendition. Some items may not be standard and/or represent an exact symbol. Exact grading may differ.



Earth Patio

INSPIRATION

The Interior

SELECTION



Interior decorations, furniture, and finishing are for demonstration purposes only. Final mansions will contain same or equivalent pieces.

Fabric

- Romo
- Casamance
- Rubelli
- Sahco
- Dedar
- Lelievre
- Pierre Frey

Aluminum

- Reynaers
- Gutmann
- Schueco
- Vitrocsa

Wardrobe

- Poliform
- Molteni
- Rimadesio
- Tisettanta

Indoor Furniture

- Giorgetti
- Molteni
- Poliform
- Flexform
- Minotti
- B&B Italia
- Maxalto
- Gubi
- Meridiani
- Cassina
- Ceccotti Collezioni
- Henge
- Porada
- Galloti & Radice
- Baxter Furniture

Outdoor Furniture

- Paola Lenti
- Varaschin
- Kettal
- Dedon
- Tribù
- Gervasoni
- Cassina

Decorative Lighting

- Baroncelli
- CTO Lighting
- Terzani
- Artemide
- Fontana Arte
- Barovier & Toso
- Foscari
- Studio Italia Design
- Penta
- Patrizia Garganti
- DelightFULL
- Andromeda International
- Jean-Michel Othoniel
- Viabizzuno
- Frederik Molenschot

Non-Decorative Lighting

- Viabizzuno
- Iguzzini
- Erco
- Delta Light
- Tragetti

Kitchen

- Poliform
- Dada
- Poggenpohl
- Effeti
- Ernestomeda
- Gullo Luxury Kitchen
- Rossana Kitchen

Kitchen Equipment

- Gaggenau
- Miele Professional
- Sub-zero & Wolf

Sanitary Ware

- Gessi
- Ritmonio
- Zucchetti
- Agape
- Antonio Lupi
- Ceramica Flaminia
- TOTO



Residential Wellness Design

DELOS WELLNESS SOLUTIONS

The world is increasingly more fast-paced, with constant connectivity resulting in a data overload and our nervous systems being continually over stimulated. The necessity to counter balance the intensity of our daily lives is more prevalent than ever.

Every aspect of The Residences interior environment designed in collaboration with Wellness Real Estate pioneer Delos using the world's leaders in wellness science; the expertise from the Mayo Clinic, Columbia University and Cleveland Clinic to create intimate spaces that heal, restore and nourish from within, to create the region's first WELL Certified™ private residences.

Wellness is reached though many elements, so when the focus is on what we breath, see, hear and feel, a home can be created with the power to support body and mind.

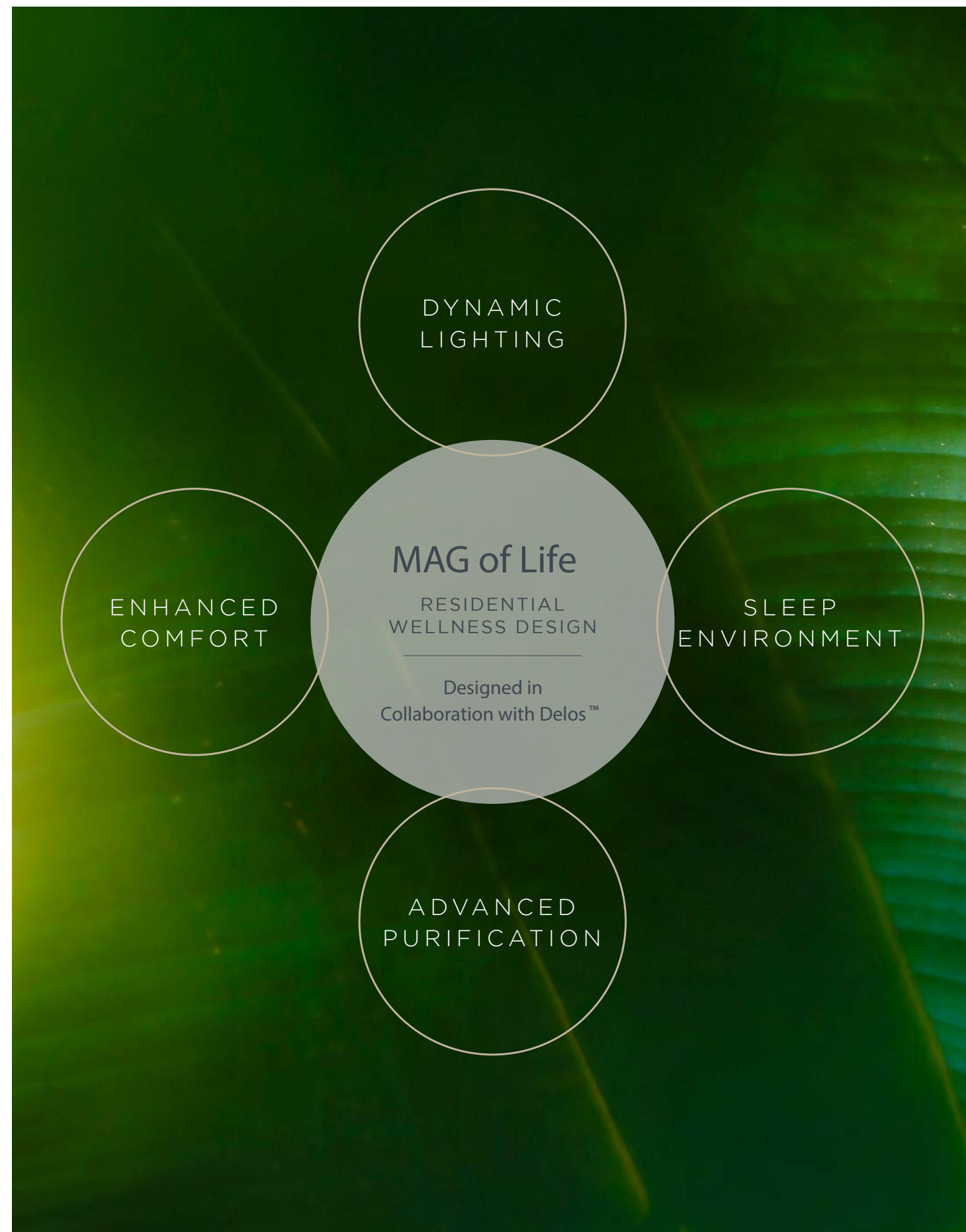
From lighting based on circadian rhythms, to carefully balanced spaces, exceptional water quality and the world's purest air, every residence is a haven of multi-dimensional wellness science in action.

Each of The Residence's interior features fully integrated smart wellness solutions by designed to harmonise the systems of the body with those of the home by bringing in precisely what the body needs and filtering out elements that may harm it.



“Delos is designing spaces to solve health problems before they’re created ... It will literally change the way we live.”

FORMER PRESIDENT BILL CLINTON
Clinton Global Initiative, 2014



The DELOS™ Pathways to Health and Happiness.



WAKE

Inspired by nature's sunrise, Dawn Simulation wakes you gradually and leaves you feeling refreshed.



NOURISH

Enjoy filtered water from the Water Purification system.



Circadian Lighting mimics natural sunlight throughout the day to balance your body's sleep-wake cycle.



SLEEP

As you settle in for the night, lower the Blackout Shades to enjoy a night of deep sleep. Night Lighting allows for safe navigation at night while minimizing sleep disruption.



ENERGIZE

Experience the rejuvenating effects of the Energizing Light before you take your Shower, which will leave your skin and hair soft and smooth.



Throughout the day, the Air Purification system reduces allergens, toxins and smoke.



RELAX

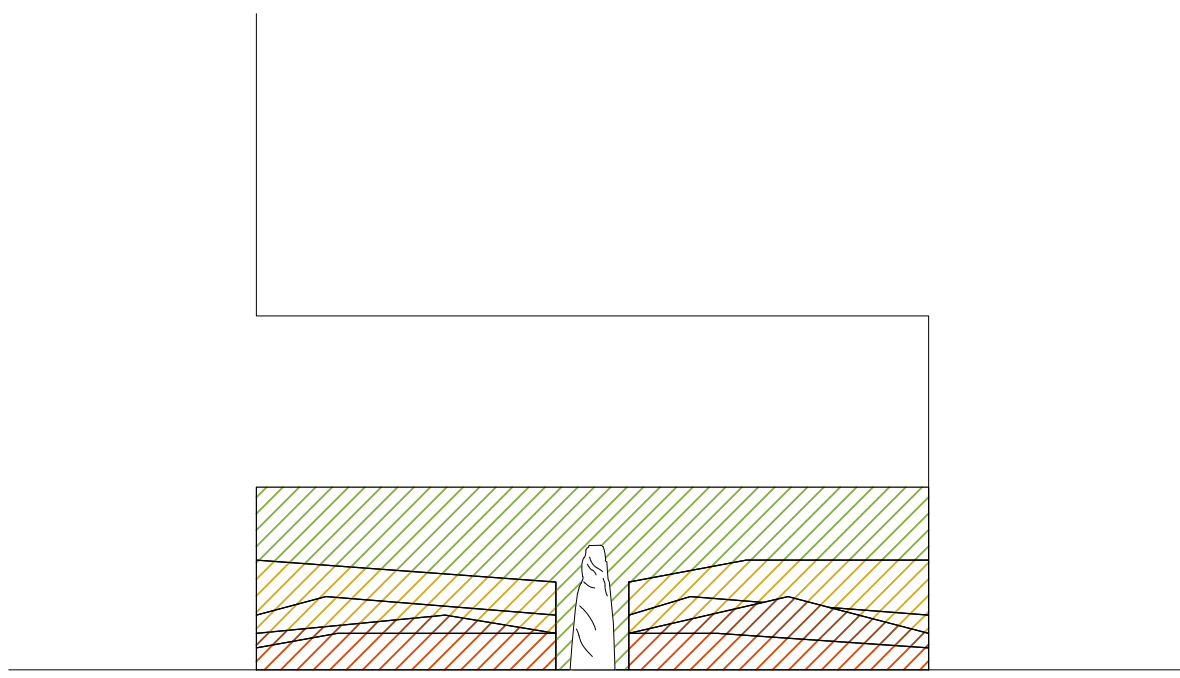
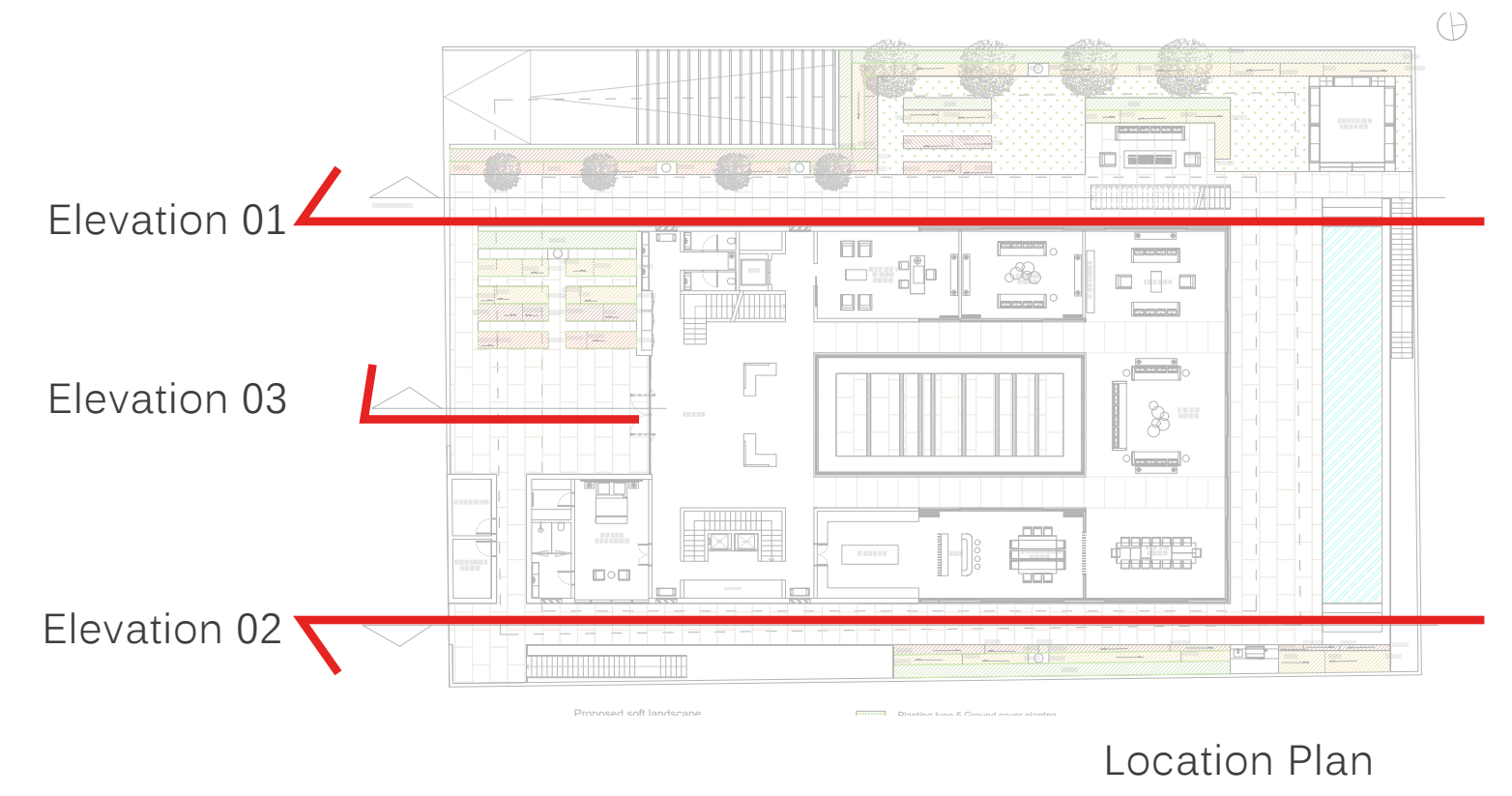
Unwind for the evening with Guided Meditation narrated by Deepak Chopra.



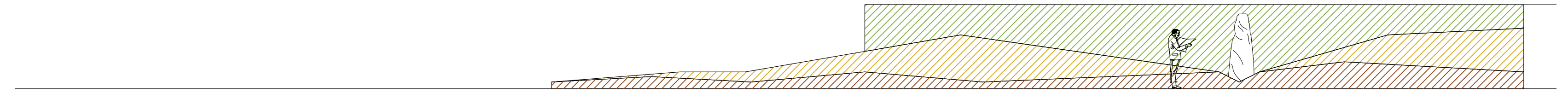
Landscape Concept

INSPIRATION

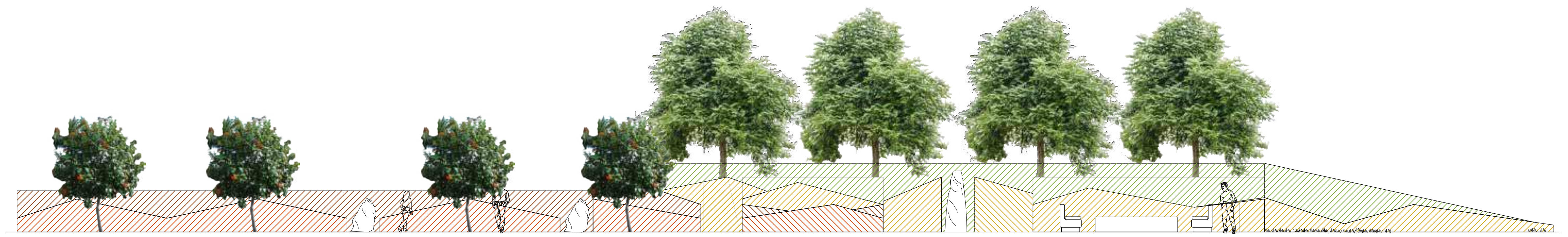
Landscape Concept



Elevation 03



Elevation 02



Elevation 01



This drawing is an artistic interpretation of the design. It is not meant to be an exact rendition. Some items may not be standard and/or represent an exact symbol. Exact grading may differ.



The Ritz-Carlton Residences, Dubai, Creekside are not owned, developed or sold by The Ritz-Carlton Hotel Company, L.L.C. or its affiliates ("Ritz-Carlton"). MAG of Life FZ-LLC uses The Ritz-Carlton marks under a license from Ritz-Carlton, which has not confirmed the accuracy of any of the statements or representations made herein.

MAG OF LIFE All room sizes and floorplan measurements are approximate and may vary per unit. Floorplans and unit features are preliminary and proposed only. Developer reserves the right to modify, revise, change or withdraw any or all of same in its sole and absolute discretion and without prior notice. Depictions of furnishings, finishes, appliances, counters, soffits, floor coverings and other matters of detail, including, without limitation, items of finish and decoration are conceptual only and are not necessarily included in each Unit. Consult your Agreement and the Prospectus for items included with your Unit.

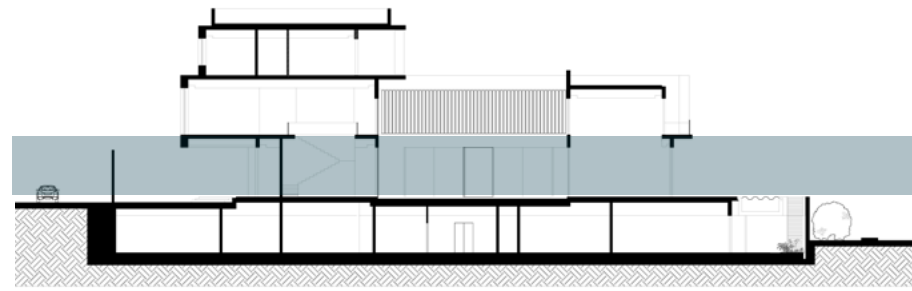


THE RITZ-CARLTON RESIDENCES

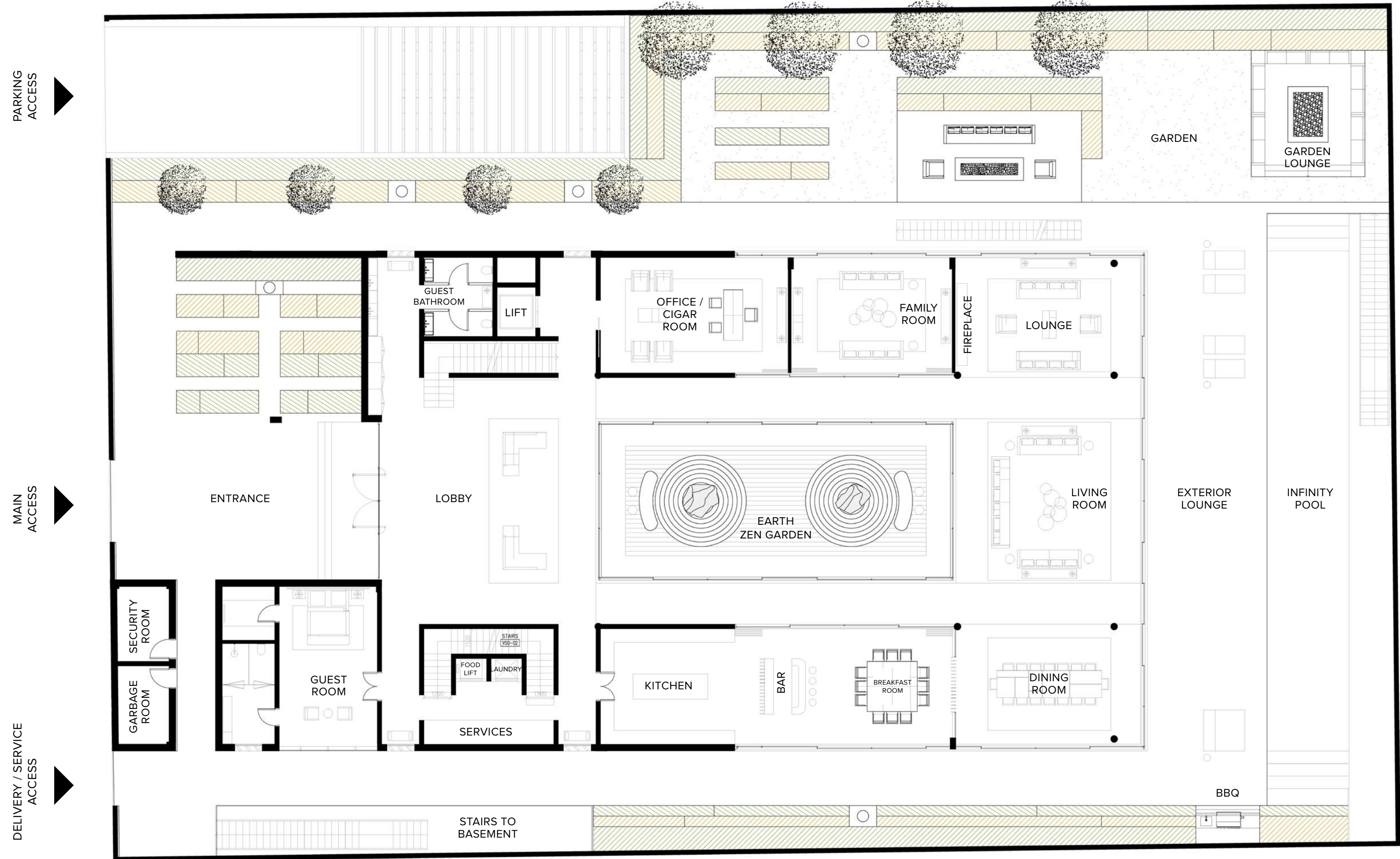
DUBAI, CREEKSIDE



Ground Floor



INTERIOR	684.69 SQ.M / 7,369.93 SQ.FT
EXTERIOR	204.32 SQ.M / 2,199.28 SQ.FT
SERVICES	21.37 SQ.M / 230.02 SQ.FT
TOTAL AREA	910.38 SQ.M / 9,799.24 SQ.FT

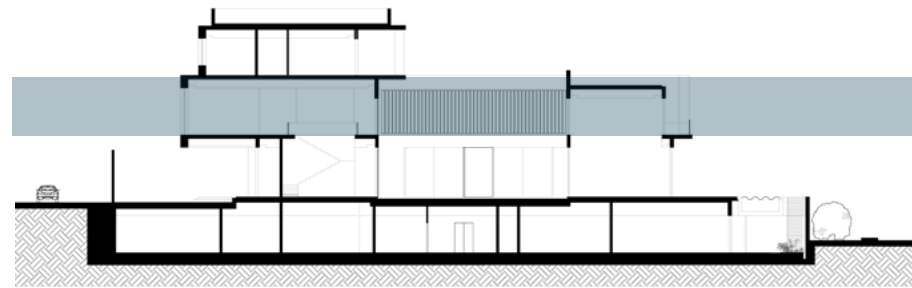


The Ritz-Carlton Residences, Dubai, Creekside are not owned, developed or sold by The Ritz-Carlton Hotel Company, L.L.C. or its affiliates ("Ritz-Carlton"). MAG of Life FZ-LLC uses The Ritz-Carlton marks under a license from Ritz-Carlton, which has not confirmed the accuracy of any of the statements or representations made herein.

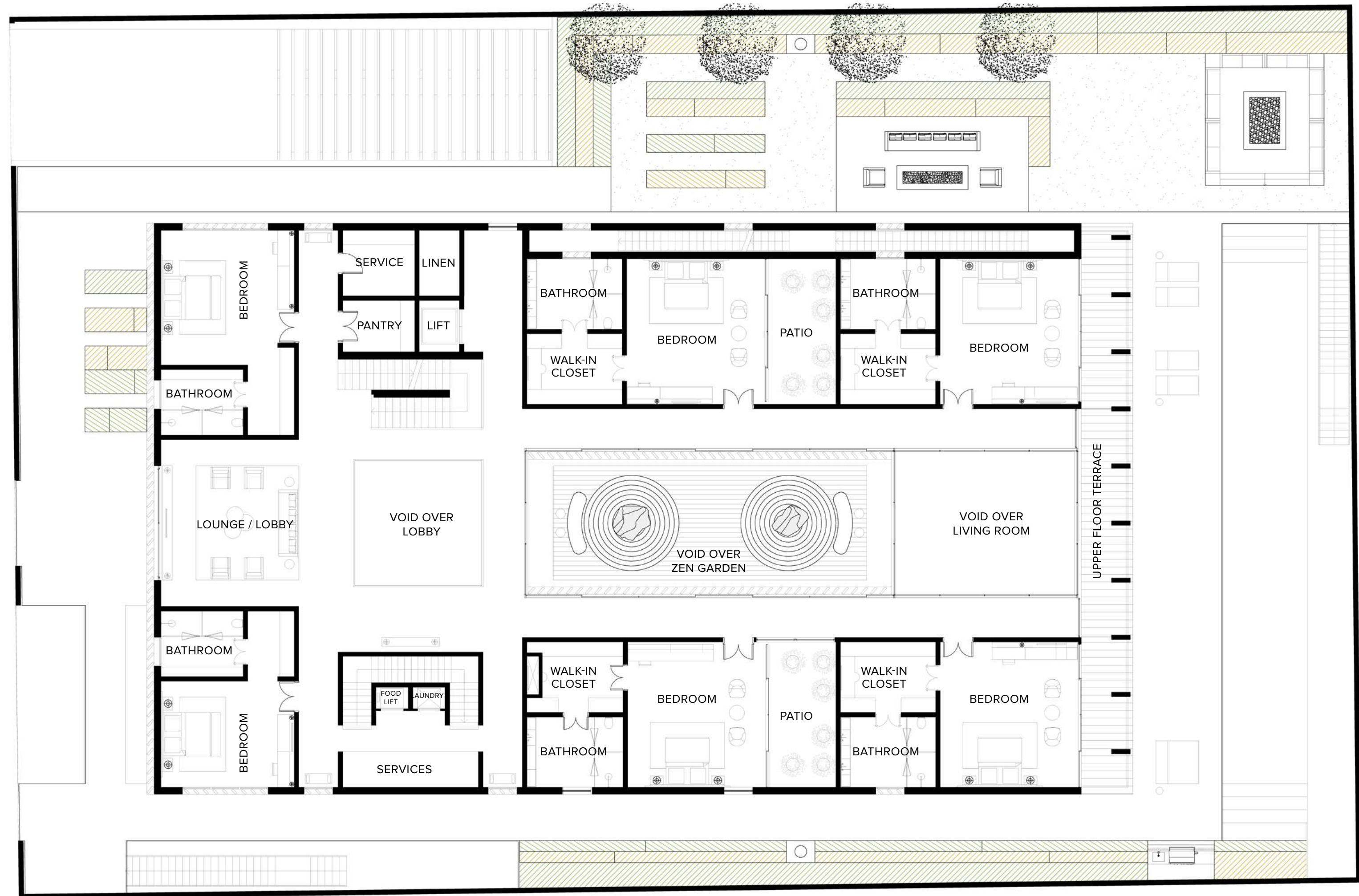
MAG OF LIFE All room sizes and floor plan measurements are approximate and may vary per unit. Floor plans and unit features are preliminary and proposed only. Developer reserves the right to modify, revise, change or withdraw any or all of same in its sole and absolute discretion and without prior notice. Depictions of furnishings, finishes, appliances, counters, soffits, floor coverings and other matters of detail, including, without limitation, items of finish and decoration are conceptual only and are not necessarily included in each Unit. Consult your Agreement and the Prospectus for items included with your Unit.



First Floor



INTERIOR	682.76 SQ.M / 7,349.16 SQ.FT
EXTERIOR	51.94 SQ.M / 559.08 SQ.FT
SERVICES	6.12 SQ.M / 65.88 SQ.FT
TOTAL AREA	740.82 SQ.M / 7,974.12 SQ.FT



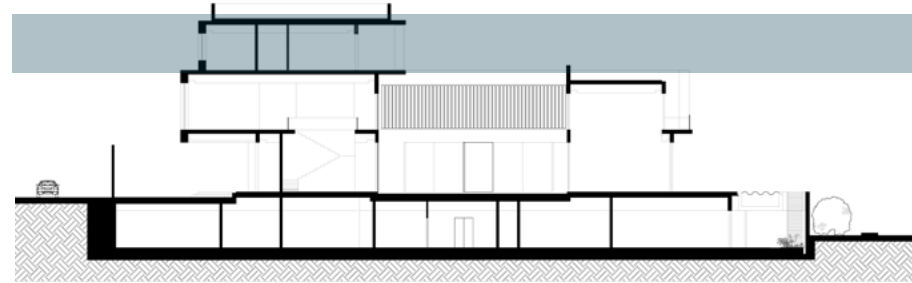


THE RITZ-CARLTON RESIDENCES

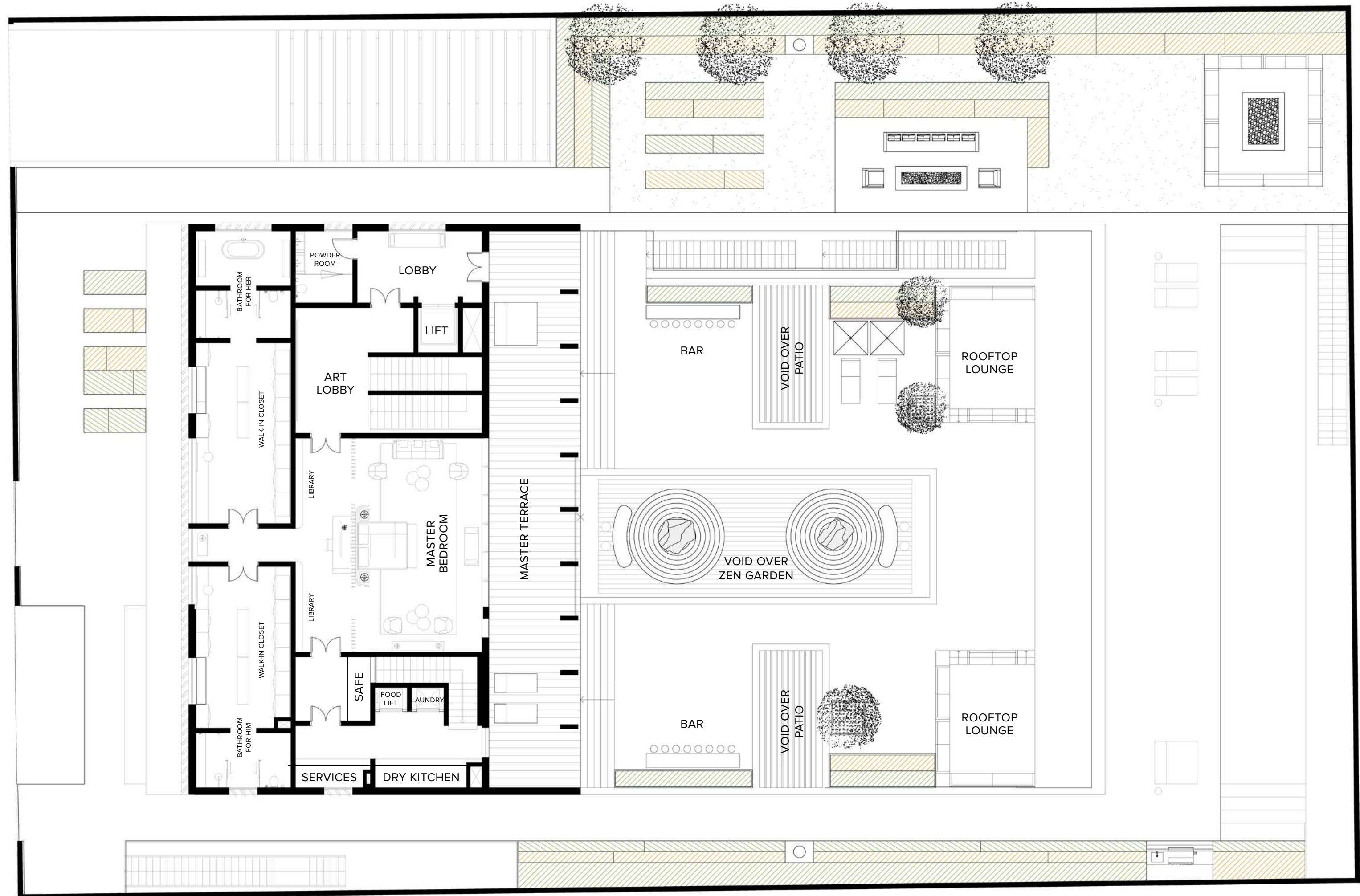
DUBAI, CREEKSIDE



Second Floor



INTERIOR	299.75 SQ.M / 3,226.48 SQ.FT
SKY GARDEN	484.04 SQ.M / 5,210.16 SQ.FT
TOTAL AREA	783.79 SQ.M / 8,436.65 SQ.FT

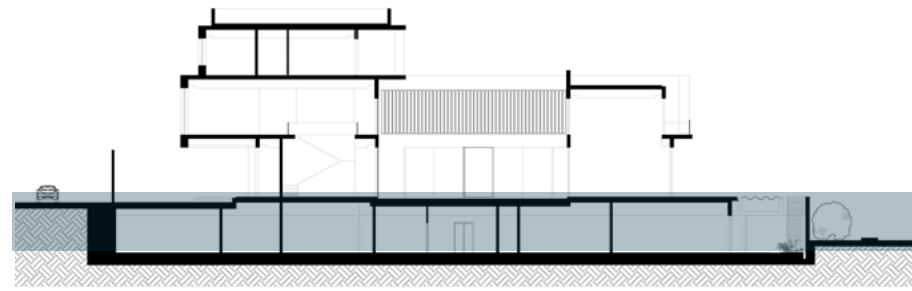


The Ritz-Carlton Residences, Dubai, Creekside are not owned, developed or sold by The Ritz-Carlton Hotel Company, L.L.C. or its affiliates ("Ritz-Carlton"). MAG of Life FZ-LLC uses The Ritz-Carlton marks under a license from Ritz-Carlton, which has not confirmed the accuracy of any of the statements or representations made herein.

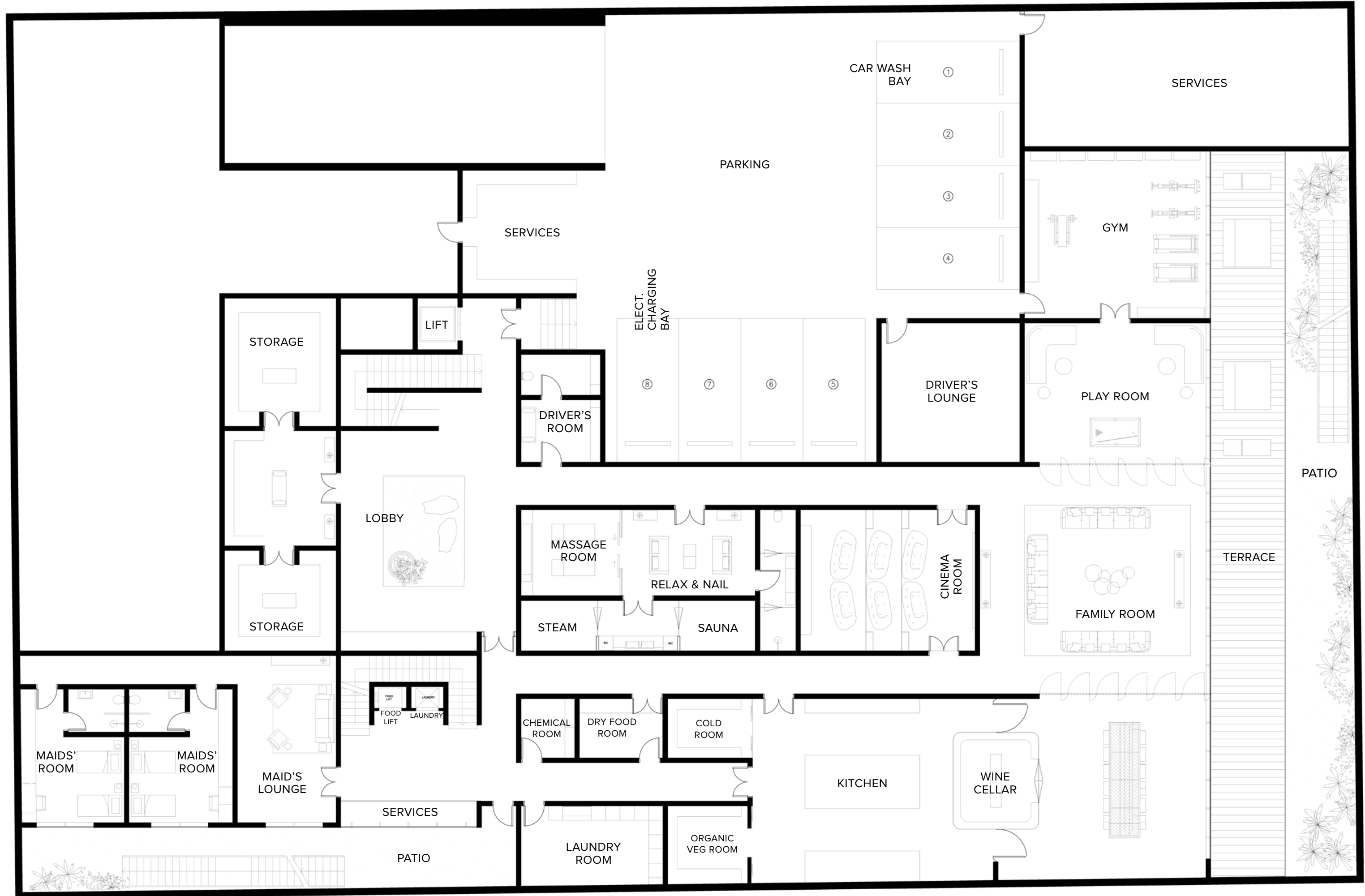
MAG OF LIFE All room sizes and floor plan measurements are approximate and may vary per unit. Floor plans and unit features are preliminary and proposed only. Developer reserves the right to modify, revise, change or withdraw any or all of same in its sole and absolute discretion and without prior notice. Depictions of furnishings, finishes, appliances, counters, soffits, floor coverings and other matters of detail, including, without limitation, items of finish and decoration are conceptual only and are not necessarily included in each Unit. Consult your Agreement and the Prospectus for items included with your Unit.



Basement



INTERIOR	1,007.47 SQ.M / 10,844.31 SQ.FT
EXTERIOR	157.77 SQ.M / 1,698.22 SQ.FT
SERVICES	733.53 SQ.M / 7,895.64 SQ.FT
TOTAL AREA	1,898.77 SQ.M / 20,438.17 SQ.FT



By the numbers



PLOT

PLOT AREA	2,217.56 - 2,318.12 SQ.M / 23,869.59 - 24,952.01 SQ.FT
PLOT NO.	A2 A5 A8 A11
NO. OF UNITS	4
NO. OF LEVELS	GROUND + 2 FLOORS & BASEMENT
OVERALL HEIGHT	15.65 M
LAYOUT	8 BEDROOMS + MAJILIS + 2 MAIDS' ROOMS + DRIVER ROOM + 12 BATHROOMS

MANSION

BUA

GROUND FLOOR	910.38 SQ.M / 9,799.24 SQ.FT
FIRST FLOOR	740.82 SQ.M / 7,974.12 SQ.FT
SECOND FLOOR	783.79 SQ.M / 8,436.65 SQ.FT
BASEMENT	1,898.77 SQ.M / 20,438.17 SQ.FT

TOTAL (BUA)

4,333.76 SQ.M / 46,648.2 SQ.FT

The Ritz-Carlton Residences, Dubai, Creekside are not owned, developed or sold by The Ritz-Carlton Hotel Company, L.L.C. or its affiliates ("Ritz-Carlton"). MAG of Life FZ-LLC uses The Ritz-Carlton marks under a license from Ritz-Carlton, which has not confirmed the accuracy of any of the statements or representations made herein.

All room sizes and floorplan measurements are approximate and may vary per unit. Floorplans and unit features are preliminary and proposed only. Developer reserves the right to modify, revise, change or withdraw any or all of same in its sole and absolute discretion and without prior notice. Depictions of furnishings, finishes, appliances, counters, soffits, floor coverings and other matters of detail, including, without limitation, items of finish and decoration are conceptual only and are not necessarily included in each Unit. Consult your Agreement and the Prospectus for items included with your Unit.

By the numbers



GROUND FLOOR			FIRST FLOOR			SECOND FLOOR			BASEMENT		
	SQ.M	SQ.FT		SQ.M	SQ.FT		SQ.M	SQ.FT		SQ.M	SQ.FT
LOBBY	101.39	1,091.35	LOUNGE/ LOBBY	56.70	610.31	ART LOBBY	19.68	211.83	LOBBY	61.73	664.46
GUEST BATHROOM	18.90	203.44	BEDROOM 1	31.66	340.79	LOBBY	15.88	170.93	SPA	67.95	731.41
GUEST ROOM	47.59	512.25	• WALK-IN-CLOSET	5.74	61.78	POWDER ROOM	7.26	78.15	CINEMA	43.12	464.14
OFFICE / CIGAR ROOM	41.55	447.24	• BATHROOM	9.47	101.93	MASTER BEDROOM	70.64	760.36	FAMILY ROOM	89.75	966.06
FAMILY ROOM	35.61	383.30	BEDROOM 2	35.44	381.47	HER WIC	32.67	351.66	PLAY ROOM	44.12	474.90
LOUNGE	42.65	459.08	• WALK-IN-CLOSET	11.80	127.01	HER BATH	18.00	193.75	GYM	53.15	572.10
LIVING ROOM	87.57	942.59	• BATHROOM	11.80	127.01	HIS WIC	27.19	292.67	TERRACE	94.66	1,018.91
DINNING ROOM	42.51	457.57	BEDROOM 3	35.44	381.47	HIS BATH	9.20	99.03	PATIO	141.44	1,522.45
BREAKFAST ROOM & KITCHEN	77.51	834.31	• WALK-IN-CLOSET	11.80	127.01	SAFE	8.50	91.49	DINNING	57.86	622.75
EXTERIOR LOUNGE	138.60	1,491.88	• BATHROOM	11.80	127.01	KITCHINET / SEVICE	18.70	201.28	WINE CELLAR	14.55	156.61
ZEN GARDEN	102.07	1,098.67	BEDROOM 4	35.44	381.47	MASTER TERRACE	90.15	970.37	KITCHEN	69.32	746.10
INFINITY POOL	138.60	1,491.88	• WALK-IN-CLOSET	11.80	127.01				MAIDS' QUARTERS	92.41	994.69
			• BATHROOM	11.80	127.01				DRIVERS' QUARTERS	48.57	522.80
			BEDROOM 5	35.44	381.47						
			• WALK-IN-CLOSET	11.80	127.01						
			• BATHROOM	11.80	127.01						
			BEDROOM 6	24.94	268.45						
			• WALK-IN-CLOSET	5.70	61.35						
			• BATHROOM	9.40	101.18						
			TERRACE	51.93	558.97						
POOL DIMENSIONS	25.9 X 3.6 X 1.2 DEPTH										
FLOOR TO CEILING HEIGHT	4.7M (4.0M TO FALSE CEILING)		FLOOR TO CEILING HEIGHT	4.5M (3.8M TO FALSE CEILING)		FLOOR TO CEILING HEIGHT	3.7M (3.0M TO FALSE CEILING)		FLOOR TO CEILING HEIGHT	3.8M (3.0M TO FALSE CEILING)	

The Ritz-Carlton Residences, Dubai, Creekside are not owned, developed or sold by The Ritz-Carlton Hotel Company, L.L.C. or its affiliates ("Ritz-Carlton"). MAG of Life FZ-LLC uses The Ritz-Carlton marks under a license from Ritz-Carlton, which has not confirmed the accuracy of any of the statements or representations made herein.

MAG OF LIFE All room sizes and floorplan measurements are approximate and may vary per unit. Floorplans and unit features are preliminary and proposed only. Developer reserves the right to modify, revise, change or withdraw any or all of same in its sole and absolute discretion and without prior notice. Depictions of furnishings, finishes, appliances, counters, soffits, floor coverings and other matters of detail, including, without limitation, items of finish and decoration are conceptual only and are not necessarily included in each Unit. Consult your Agreement and the Prospectus for items included with your Unit.

Amenities And Facilities

- Luxury Wellness Hotel
- Private Boat Dock For Up To 120ft. Yachts
- Eight Sustainable and Organic-Focused Retail Spaces, Including Weekend Farmers' Market
- 24/7 Secured Private Parking with Valet
- Gated Community with Unique Views on the Wildlife Sanctuary
- Beach Access to The Ritz-Carlton Jumeirah Hotel
- Unique Access to One of Dubai's Most Recognized Private School: Swiss International Scientific School

- Wellness Center
Rejuvenation and Detox Facilities
Full Floor of Fitness Gear
Multiple Yoga Rooms
Indoor Pools

- Members' Only Resort Clubhouse
Over Three Michelin-Star Fusion,
& Healthy-Cuisine Restaurants

- The Residences Indoor & Outdoor
Business Club Facilities
Members' Only Welcoming Lounge Area
Breakfast & All-Day Dining Restaurant
Health Bar
Board Room / Meeting Room
Event / Party Hall
Cinema / Media / Games Room
Indoor Pools

- The Residences Indoor & Outdoor Kids Club
Multi-Purpose Rooms: Party, Classroom, Yoga,...
Technology Rooms: Science, Coding,...
Play Zones: Lego, Climbing, Baby Play
Kitchen For Cooking Classes
Organic Plants Garden

- Residential Neighborhood Park
Adults Residential Pool, and its Deck
Kids Large Outdoor Park & Splash Pool
Yoga Platform

Residential Services

Included In Your Service Charges

- Move-In Coordination
- Concierge Service
- Butler/Doorman/Porter Services
- Valet Parking 24/7 in Exclusive Basement Parking for Residents & Visitors
- Airline / Private Air Reservations
- Airport / Ground Transportation Arrangements
- Automobile Rental Reservations
- Limousine Reservations, incl. Rolls-Royce
- Business Center Services
- Coordinate Delivery Services
- Hotel Reservations
- Reserving Golf Tee Times
- Theater & Entertainment Information
- Ordering Floral Arrangements
- City Activity Arrangements
- Common Area Housekeeping
- Loss Prevention



**THE RITZ-CARLTON
RESIDENCES**

DUBAI, CREEKSIDE

À La Carte Services

General

- Pre-arrival Grocery Shopping
- Laundry/Dry Cleaning
- Alterations Services
- Car Washing/Detailing
- Equipment Rental & Arrangements
- Secretarial Services
- Function/Event Planning
- Mail Packing & Shipping
- Plant Care Maintenance
- Translation Services
- Nanny/Child Care Services
- Pet Grooming
- Vacant Home Care Inspections
- Owner Absentee Program
- Sommelier
- Notary Public Service

Academics

- Swiss International Scientific School
- Bilingual, Private Boarding School
- Exclusive Scholarship
- Preferential Rate
- Guaranteed Entry for your children

Lifestyle

- Exclusive Access to Resort Exotic Car Fleet
- Exclusive Access to Resort Private Yachts
- Preferential Rate on Resort Hotel Stays for your guests
- Michelin-Star Fine Dining
- Healthy-Cuisine Restaurants
- In-Residence Dining and Catering by the Chef himself

Engineering And Housekeeping

Day-to-Day Maintenance Coordination by The Ritz-Carlton

- Furniture Assembly
- Bulk/Move-in Trash Removal
- Picture Hanging
- Minor Electrical & Plumbing
- HVAC Filter Vacuum & Mop Floors
- Dust Interior
- Strip Beds & Change Sheets
- Clean Patio

The Concierge and Management staff can assist you with the services listed on this page. Please note that some of these services are À La Carte Services and performed by third parties. Conditions and charges apply to À La Carte Services.

Collaborations & Experiences

OWNER AND DEVELOPER



MAG of Life, the Wellness Real Estate division of MAG Group and driving force behind the KETURAH Resort. With current project estimates of over US\$ 1 billion, the company focuses on developing and delivering high-quality projects that provide long-term benefits to both investors and customers. MAG of Life, spearheads the MAG Group's drive to the forefront of the real estate industry thanks to projects imbued with the company's philosophy of innovation and continuous improvement.

MAG of Life has always been inspired by the art of living well. Talal M. Al Gaddah, the founder and visionary behind the company has created a sanctuary of wellness and luxury, not in some far away sacred retreat, but rather in the city, and even closer, in your home where you can be nourished every day.

OUR COMMITMENT

Our primary focus is health, wellness and happiness since without it; one cannot enjoy the richness of life and vitality. As part of the innovative program, specific wellness features and technologies focus on what you breathe, what you see, what you consume and how you feel, to create an environment that is uniquely yours, yet optimized for health and wellbeing. This combined with a mindful approach to crafted quality of design and construction in pursuit of excellence only seen before in private palaces.

THE ARCHITECT

AMAR SABEH

Acclaimed French designer, curator and architect Amar Sabeh renowned for his creativity is a master of interpreting luxury in unique ways and has been instrumental in achieving the vision and completion of The Ritz Carlton Residences, Dubai, Creekside.

For The Residences, he has translated this spectacular space into breath-taking interiors and seamless design and wellness features that are still effortlessly human. Here, nature does not end, inside or out. The architecture and interior design of The Residences exude timeless modernity based on grand, elegant and light-filled spaces complimented by bespoke customized designer furniture.

Amar has partnered with DCC to bring his vision to life. Through their Innovative techniques, iconic designs, intricate details and highquality finishing: DCC has raised the bar in construction expertise and excellence in the Middle East.

PROPERTY MANAGEMENT

THE RITZ-CARLTON

The Ritz-Carlton has always been a name synonymous with distinction that continues to redefine luxury, through an incomparable commitment to the finest personal services and devotion to the standards that have made them the top luxury brand in the world.

Residence owners enjoy the same Legendary services as The Ritz-Carlton hotel guests and the added value of a dedicated Residence staff and private, owners-only amenities.

HEALTH & WELLNESS



Delos™ helps create spaces that actively contribute to human health, performance and well-being by marrying the best innovations in technology, health, science, and real estate. Combining the vision and philosophies of its parent companies, MAG of Life aims to provide Dubai a platform to improve human health and wellbeing by creating buildings that are developed with people's health and wellness at the centre of their design, supported by programming, aesthetics, consultation, research, and an array of innovative solutions and technologies.

Spaces that promote health, performance and wellbeing

CERTIFICATION



The International WELL Building Institute™ is the global wellness leader with a mission to enhance health and wellbeing in the spaces where we live, work, learn, and play. Built on a ground breaking collaboration between experts across building and health sciences, The International WELL Building Institute™ develops products, programs, and solutions that transform our environments into vehicles for health, wellbeing, performance, and resilience.



THE RITZ-CARLTON RESIDENCES

DUBAI, CREEKSIDE



The Ritz-Carlton Residences, Dubai, Creekside
Sales Gallery, Podium Level
Gate Village 11, Dubai International Financial Centre (DIFC), Dubai

*Click or Scan QR Code
for location on maps*

www.theresidencesdubaicreek.com
info@theresidencesdubaicreek.com

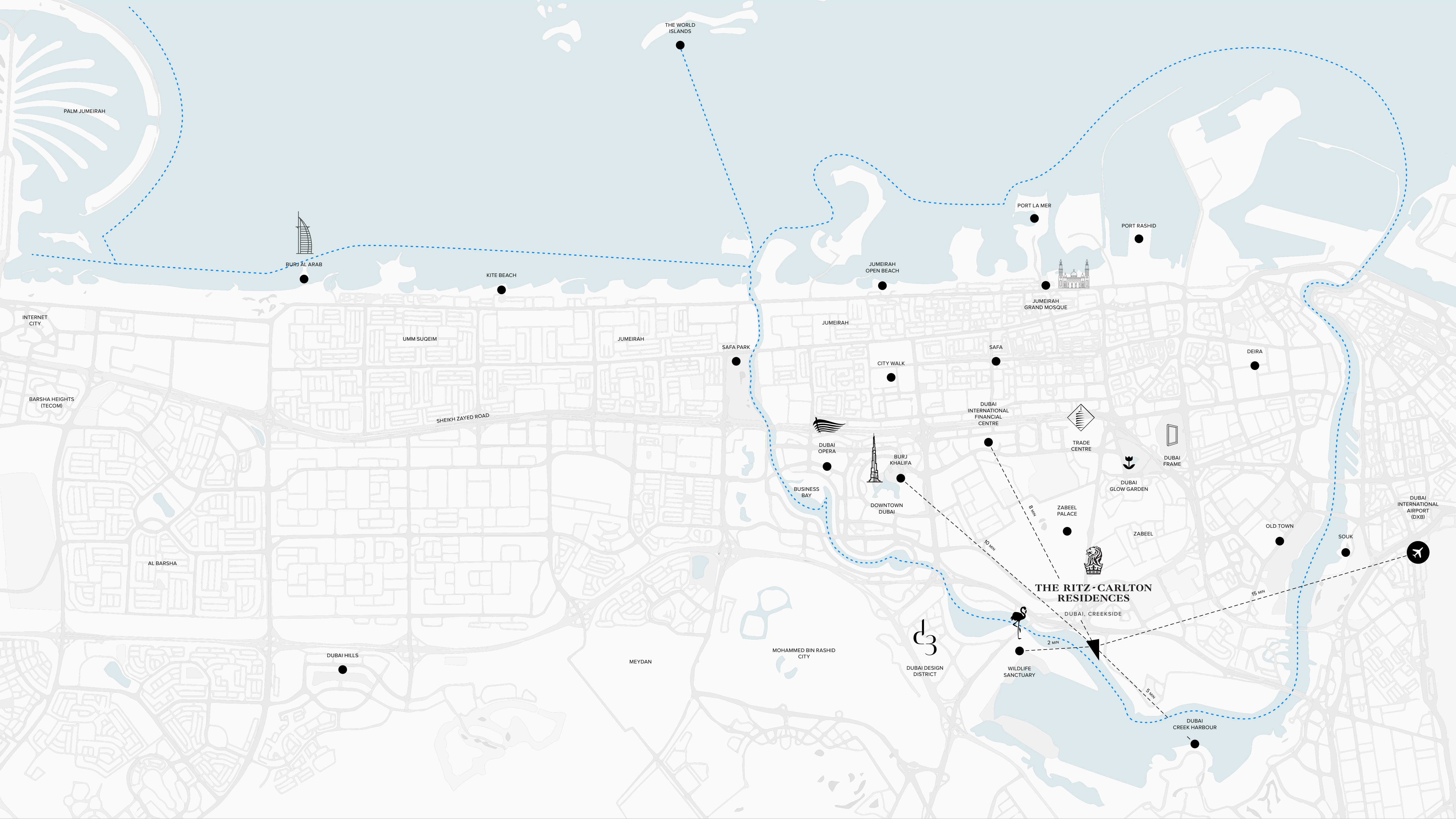
The Ritz-Carlton Residences, Dubai, Creekside are not owned, developed or sold by The Ritz-Carlton Hotel Company, L.L.C. or its affiliates ("Ritz-Carlton"). MAG of Life FZ-LLC uses The Ritz-Carlton marks under a license from Ritz-Carlton, which has not confirmed the accuracy of any of the statements or representations made herein.



**THE RITZ-CARLTON
RESIDENCES**

DUBAI, CREEKSIDE

———— MASTER PLAN ————



PALM JUMEIRAH

THE WORLD ISLANDS

BURJ AL ARAB

KITE BEACH

PORT LA MER

PORT RASHID

JUMEIRAH OPEN BEACH

JUMEIRAH GRAND MOSQUE

INTERNET CITY

UMM SUGEIM

JUMEIRAH

SAFA PARK

JUMEIRAH

CITY WALK

SAFA

DEIRA

BARSHA HEIGHTS (TECOM)

SHEIKH ZAYED ROAD

DUBAI OPERA

BURJ KHALIFA

DUBAI INTERNATIONAL FINANCIAL CENTRE

TRADE CENTRE

DUBAI FRAME

BUSINESS BAY

DOWNTOWN DUBAI

ZABEEL PALACE

DUBAI GLOW GARDEN

DUBAI INTERNATIONAL AIRPORT (DXB)

ZABEEL

OLD TOWN

SOUK

AL BARSHA

DUBAI HILLS

MEYDAN

MOHAMMED BIN RASHID CITY

DUBAI DESIGN DISTRICT

WILDLIFE SANCTUARY

THE RITZ-CARLTON RESIDENCES
DUBAI, CREEKSIDE

DUBAI CREEK HARBOUR

8 MIN

10 MIN

2 MIN

5 MIN

15 MIN

A Landmark Location | *Creekside Waterfront*

The City and Nature *In One View.*



**THE RITZ-CARLTON
RESIDENCES**

DUBAI, CREEKSIDE



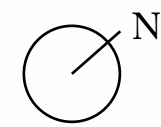
Wildlife Sanctuary

550m Waterfront

The Ritz-Carlton Residences nestled in the quiet natural beauty of Ras El Khor Reserve, where breath-taking views of mangroves awaits, along with an air rich with naturally high levels of oxygen, the sanctuary allows you to become infused with wellness.

The Ritz-Carlton Residences is the ultimate urban resort destination in terms of best of both worlds. Offering a refuge from “the city within the city”. From your new home, you will enjoy scenic views of the Dubai skyline and the Ras Al Khor wildlife sanctuary. Across the glistening creek waters, you are able to see a variety of migratory birds like pink flamingos or cormorants foraging on the riverbank, next to smaller beautiful species.

From this peaceful setting, you can conveniently reach the vibrant downtown area (4.5km) within minutes only by car, boat or via the boardwalk with its running and biking trail.

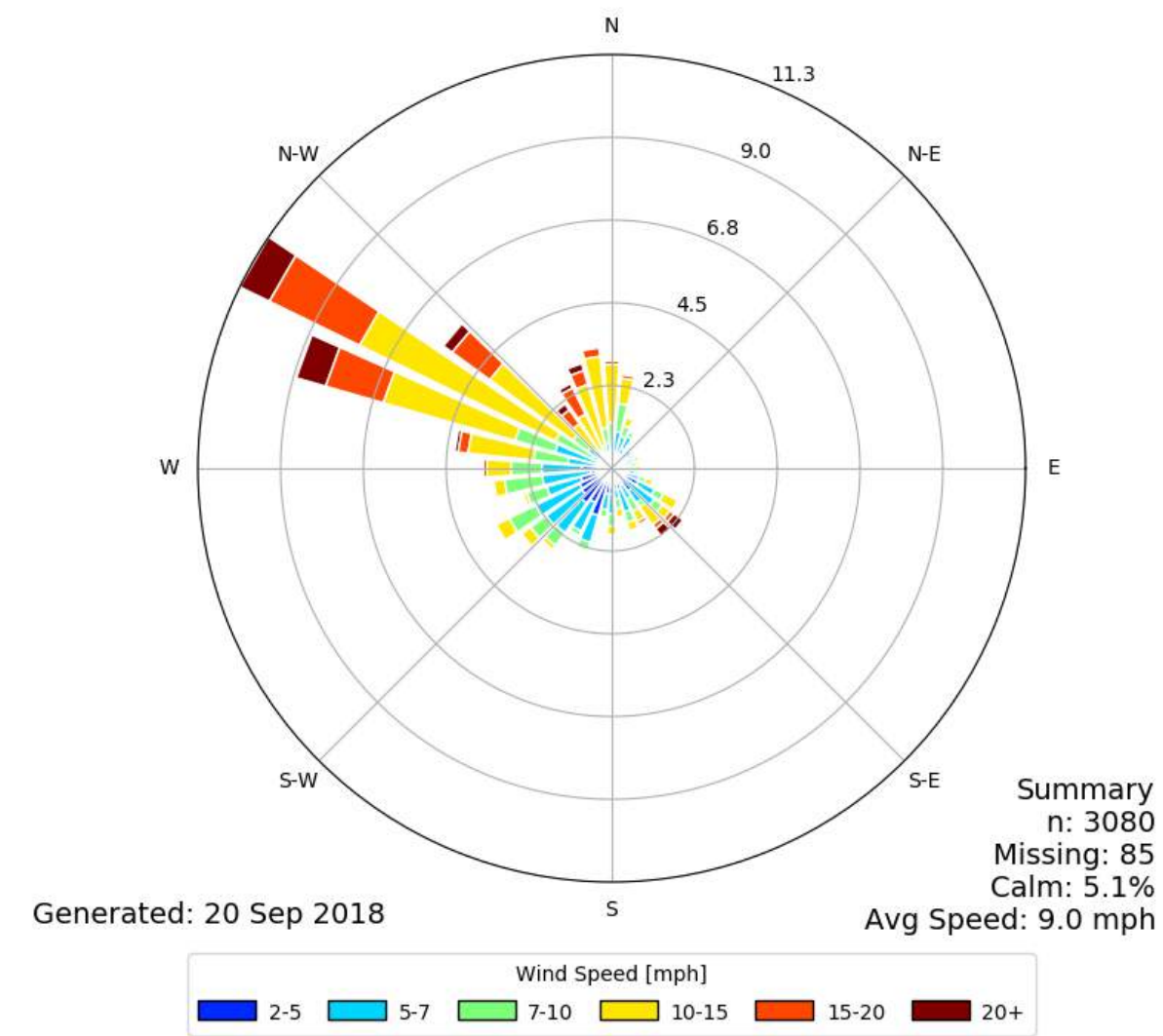


WELLNESS SITE ANALYSIS

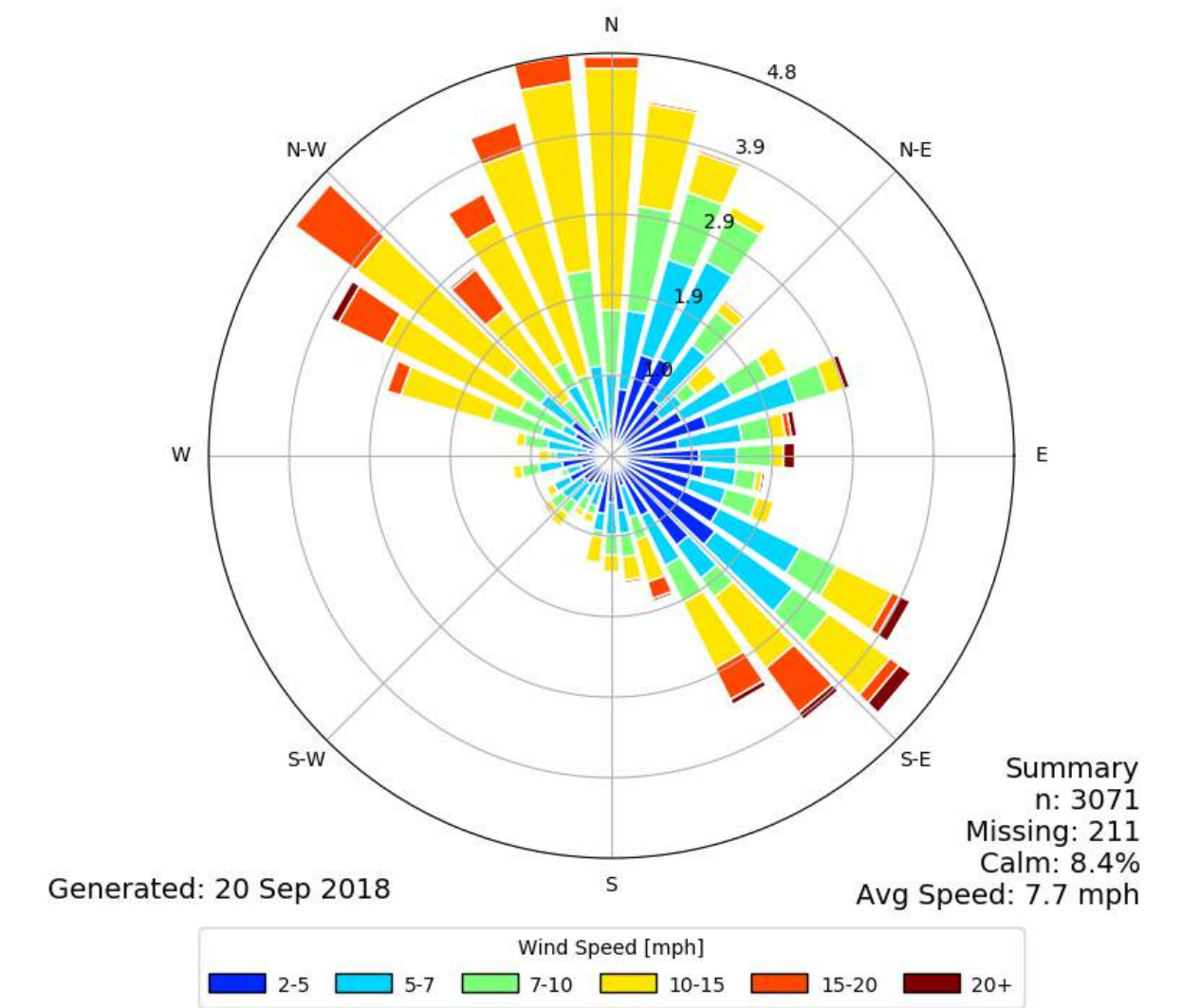
Wind Study

The wind is coming with most frequency and intensity from the Creek Side situated south from the site. The building volume is following the same direction so the air flows around most of the facades and blows the surface heating away.

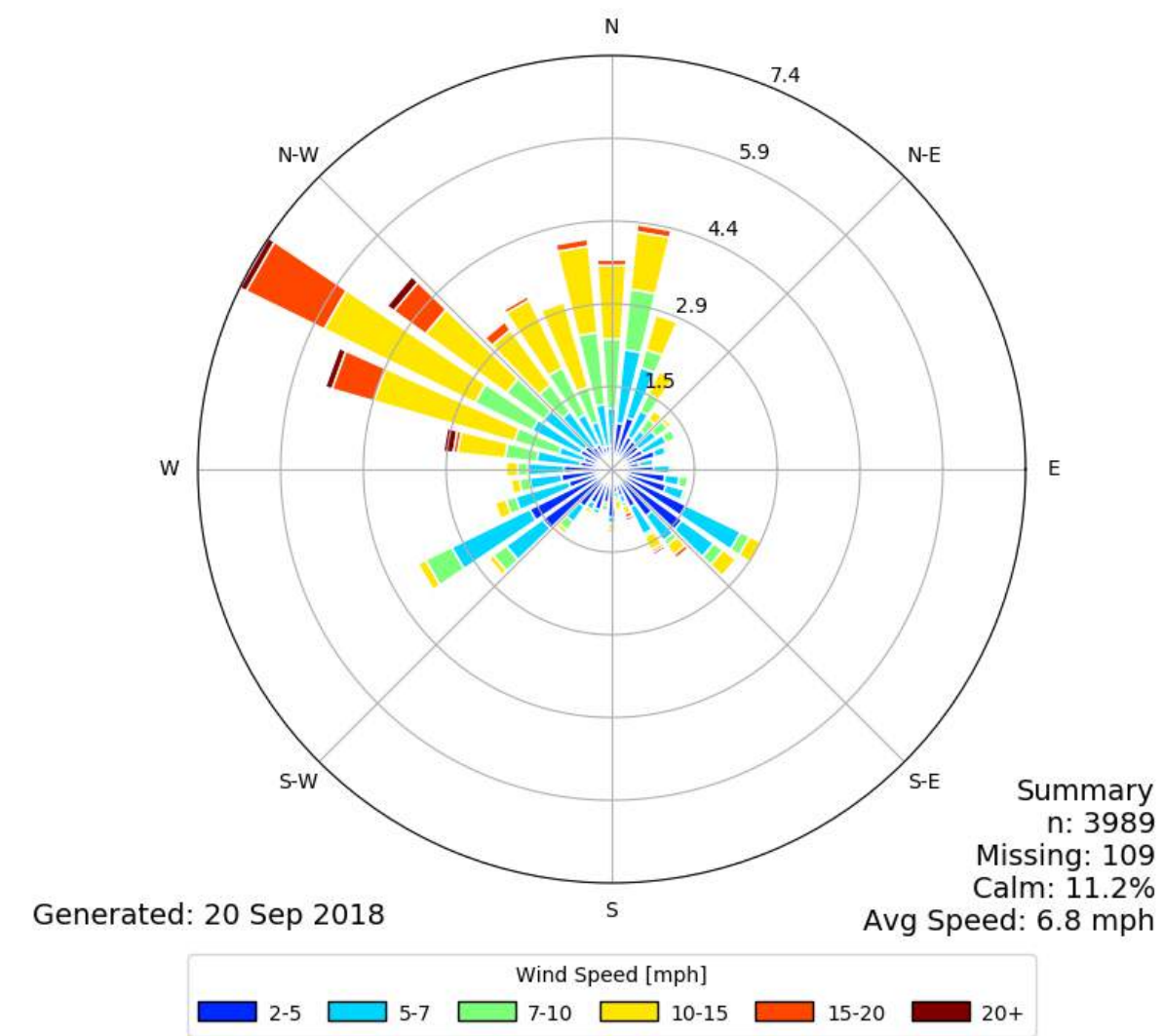
[QGX] AL DHAFRA
Windrose Plot [Time Domain: Jun,]
Period of Record: 07 Jun 2010 - 01 Jul 2015



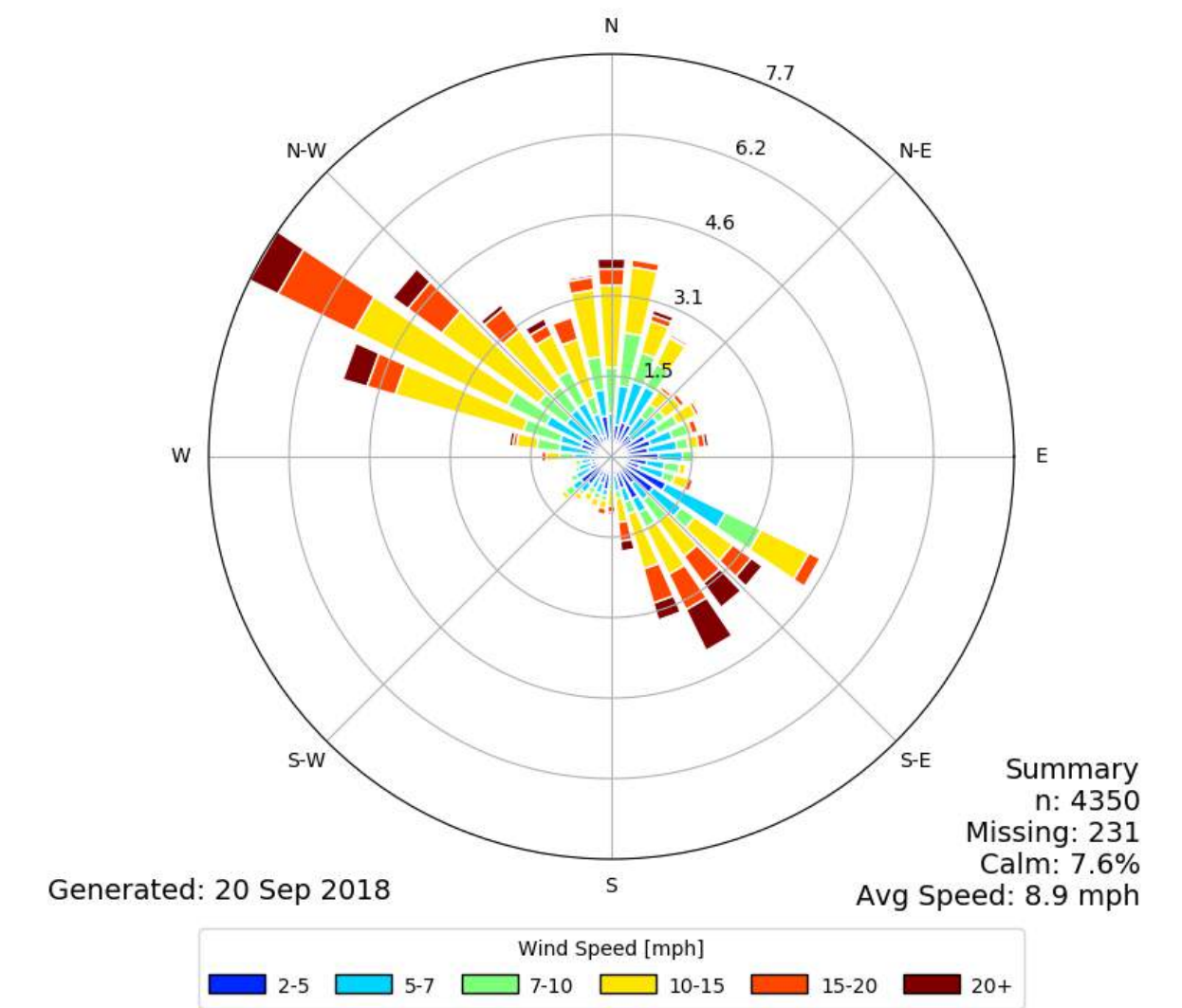
[QGX] AL DHAFRA
Windrose Plot [Time Domain: Sep,]
Period of Record: 01 Sep 2010 - 01 Oct 2015

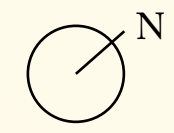


[QGX] AL DHAFRA
Windrose Plot [Time Domain: Dec,]
Period of Record: 02 Dec 2010 - 01 Jan 2016



[QGX] AL DHAFRA
Windrose Plot [Time Domain: Mar,]
Period of Record: 01 Mar 2011 - 31 Mar 2016





WELLNESS SITE ANALYSIS

Sun Study

The sun behavior is carefully analyzed in its path, orientation and height, and the architecture is adjusted in order to allow most natural light without reaching overheating

8 am

12 am

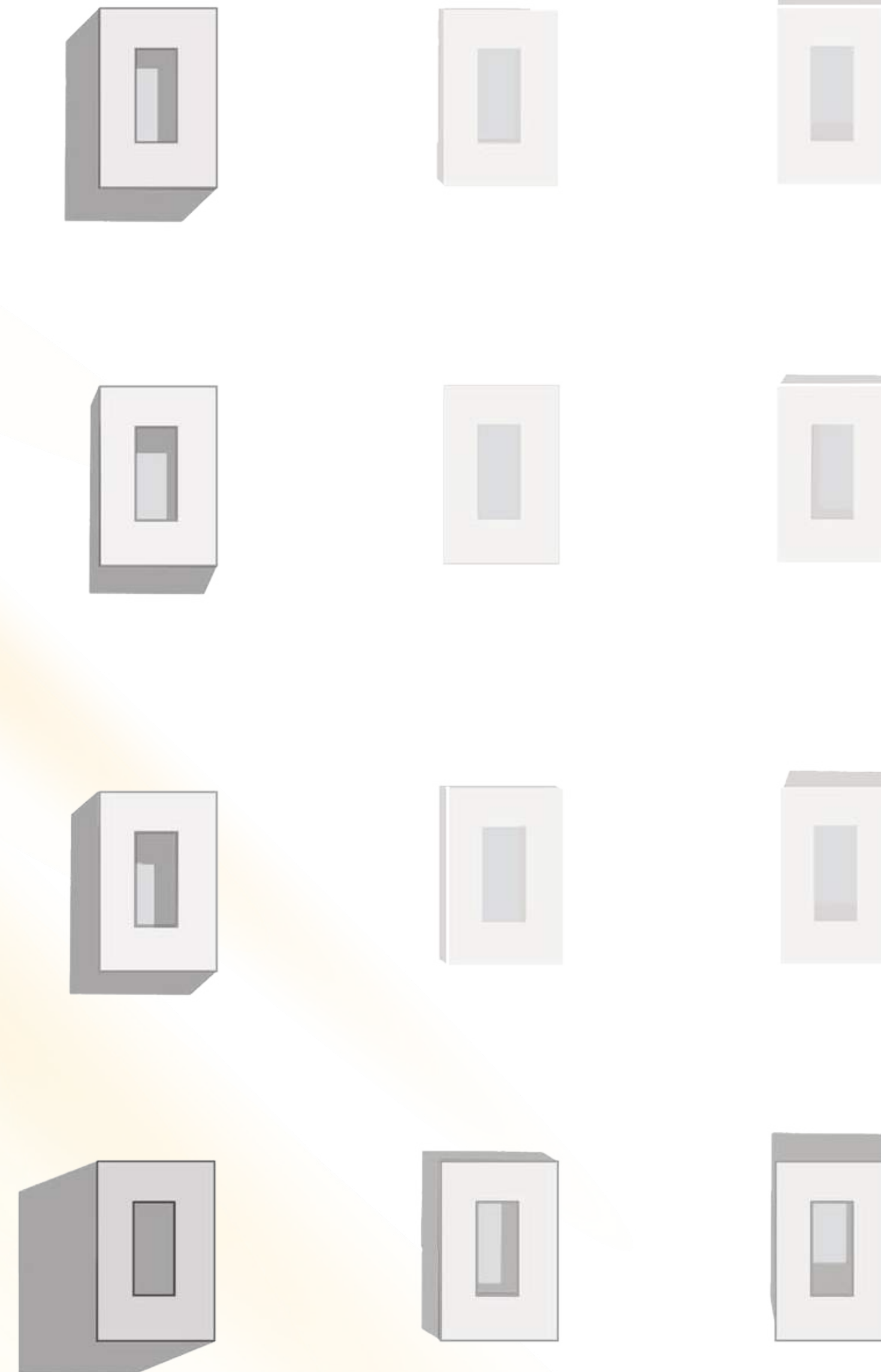
4 pm

SPRING

SUMMER

AUTUMN

WINTER







- A** Creekside Mansions
- B** Creekside Residences (Butterfly Buildings B)
- C** Creekside Residences (Butterfly Buildings C)
- D** Keturah Wellness Centre
- E** Signature Wellness Hotel
- F** Hotel Residences (Courtyard Building F)
- G** Creekside Residences (Courtyard Buildings G)



SUNSET

SUNRISE

DOWNTOWN
DUBAI

WILDLIFE
SANCTUARY

CREEK
VIEW

DUBAI CREEK
HARBOUR

KETURAH
RESORT

This drawing is an artistic interpretation of the design. It is not meant to be an exact rendition. Some items may not be standard and/or represent an exact symbol. Exact grading may differ.

THE RESORT

- Situated adjacent to Ras Al Khor Wildlife Sanctuary
- Gated community spanning 80,000 sq.m
- 550m Waterfront
- Easy pedestrian access and by bicycle to the city at large
- 15 min. (4.5 km) away from Burj Khalifa and Downtown Dubai or Dubai Creek Harbour
- Views: Downtown Dubai, Wildlife Sanctuary, Dubai Creek and Harbour
- Private boat dock for up to 120ft. Yachts
- KETURAH Wellness Centre
- Luxury Signature Hotel
- Serviced Hotel Residences
- The Ritz-Carlton Residences
- Freehold-ownership
- Delos health and living certified
- Fully serviced by The Ritz-Carlton
- The Ritz-Carlton butler service on demand
- Resort gardens with pools, waterfalls, gazebos and lush landscaped spaces
- Eight Sustainable and Organic-Focused Retail Spaces, including Weekend Farmers' Market
- 24/7 private parking with valet

WELLNESS ZONES

Residents Club

- Business Club Facilities
- Dedicated “Him” and “Her” Lounge Areas
- Breakfast & All-Day Dining Restaurant
- Three Michelin-Star Restaurant
- Health Bar
- Board Room / Meeting Room
- Event / Party Hall
- Cinema / Media / Games Room
- Indoor Pools

The Residences Indoor & Outdoor Kids Club

- Multi-Purpose Rooms: Party, Classroom, Yoga,...
- Play Zones: Lego, Climbing, Baby Play
- Kitchen For Cooking Classes

Residential Neighborhood Park

- Adults Residential Pool, and its Deck
- Kids Large Outdoor Park & Splash Pool
- Yoga Platform

Keturah Wellness Centre & SPA

- 80,000 sq.ft Unique Wellness Ecosystem
- Rejuvenation and Detox Facilities
- ZERO Gravity Pools
- Health and Fitness Club
 - High-Tech Gyms
 - Multiple Yoga Rooms
 - Pilates Studios
 - Physiotherapy and Psychology Treatment Rooms
 - Health Education Classrooms
- Health & Medicare Center
 - G.P. Medical | Dental | Dermatologist | Cosmetic
 - 24/7 Access To Personalized Medical Care



ONE-OF-A-KIND

Waterfront Living

Lapped by the gentle rhythms of turquoise waters, and sitting gracefully on the shores of the Dubai Creek, the Ritz-Carlton Residences offer more than waterfront living. The resort is a landmark of luxury, wellness and craftsmanship.

On the backdrop of the iconic Dubai skyline, the Ritz-Carlton Residences are nestled in the quiet natural beauty of Ras El Khor Nature Reserve, where breath-taking views of mangroves await, along with an air rich with naturally high levels of oxygen. The sanctuary allows you to become infused with wellness on all levels.

Offering a peaceful refuge from one of the most vibrant and forward thinking cities in the world, you can conveniently reach the vibrant downtown area (4.5 km) within minutes by car, boat or via the boardwalk with its running and biking trail.

RESIDENTIAL SERVICES

Included In Your Service Charges

- Move-In Coordination
- Concierge Service
- Butler/Doorman/Porter Services
- Valet Parking 24/7 in Exclusive Basement Parking for Residents & Visitors
- Airline / Private Air Reservations
- Airport / Ground Transportation Arrangements
- Automobile Rental Reservations
- Limousine Reservations, incl. Rolls-Royce
- Business Center Services
- Coordinate Delivery Services
- Hotel Reservations
- Reserving Golf Tee Times
- Theater & Entertainment Information
- Ordering Floral Arrangements
- City Activity Arrangements
- Common Area Housekeeping
- Loss Prevention

AMENITIES & FACILITIES

General

- Luxury Wellness Hotel
- Private Boat Dock For Up To 120ft. Yachts
- Eight Sustainable and Organic-Focused Retail Spaces, including Weekend Farmers' Market
- 24/7 Secured Private Parking with Valet
- Gated Community with Unique Views on the Wildlife Sanctuary
- Beach Access to The Ritz-Carlton, Jumeirah Hotel
- Unique Access to One of Dubai's Most Recognized Private School: *Swiss International Scientific School*

Wellness Center

- Rejuvenation and Detox Facilities
- Full Floor of Fitness Gear
- Multiple Yoga Rooms
- Indoor Pools

Members' Only Resort Clubhouse

Over Three Michelin-Star Fusion and Healthy-Cuisine Restaurants

The Residences Indoor & Outdoor

- Business Club Facilities
- Members' Only Welcoming Lounge Area
- Breakfast & All-Day Dining Restaurant
- Health Bar
- Board Room / Meeting Room
- Event / Party Hall
- Cinema / Media / Games Room
- Indoor Pools

The Residences Indoor & Outdoor Kids Club

- Multi-Purpose Rooms: Party, Classroom, Yoga,...
- Play Zones: Lego, Climbing, Baby Play
- Kitchen For Cooking Classes
- Organic Plants Garden

Residential Neighborhood Park

- Adults Residential Pool, and its Deck
- Kids Large Outdoor Park & Splash Pool
- Yoga Platform

À LA CARTE SERVICES

- Pre-arrival Grocery Shopping
- Laundry/Dry Cleaning
- Alterations Services
- Car Washing/Detailing
- Equipment Rental & Arrangements
- Secretarial Services
- Function/Event Planning
- Mail Packing & Shipping
- Plant Care Maintenance
- Translation Services
- Nanny/Child Care Services
- Pet Grooming
- Vacant Home Care Inspections
- Owner Absentee Program
- Sommelier
- Notary Public Service

Lifestyle

- Exclusive Access to Resort Exotic Car Fleet
- Exclusive Access to Resort Private Yachts
- Preferential Rate on Resort Hotel Stays for your guests
- Michelin-Star Fine Dining
- Healthy-Cuisine Restaurants
- In-Residence Dining and Catering by the Chef himself

Engineering And Housekeeping

Day-to-Day Maintenance Coordination by The Ritz-Carlton

- Furniture Assembly
- Bulk/Move-in Trash Removal
- Picture Hanging
- Minor Electrical & Plumbing
- HVAC Filter Vacuum & Mop Floors
- Dust Interior
- Strip Beds & Change Sheets
- Clean Patio

Academic

Swiss International Scientific School

- *Bilingual Private Boarding School*
- *Exclusive Scholarship*
- *Preferential Rate*
- *Guaranteed Entry for your Children*

The Concierge and Management staff can assist you with the services listed on this page.

Please note that some of these services are À La Carte Services and performed by third parties.

Conditions and charges apply to À La Carte Services.



THE RITZ-CARLTON RESIDENCES

DUBAI, CREEKSIDE

WE ARE HUMAN
LIVE & INVEST



*Click or Scan QR Code
for location on maps*

The Ritz-Carlton Residences, Dubai, Creekside
Sales Gallery, Podium Level
Gate Village 11, Dubai International Financial Centre (DIFC), Dubai

www.theresidencesdubaicreek.com
info@theresidencesdubaicreek.com

The Ritz-Carlton Residences, Dubai, Creekside are not owned, developed or sold by The Ritz-Carlton Hotel Company, L.L.C. or its affiliates ("Ritz-Carlton"). MAG of Life FZ-LLC uses The Ritz-Carlton marks under a license from Ritz-Carlton, which has not confirmed the accuracy of any of the statements or representations made herein.