

**WE ARE HUMAN**  
LIVE & INVEST



Kempinski  
Marina Residences

DUBAI

# FLOOR PLAN COLLECTION

*Kempinski*

HOTELIERS SINCE 1897

# 1 Bedroom

# Type 1

# 1 Bedroom

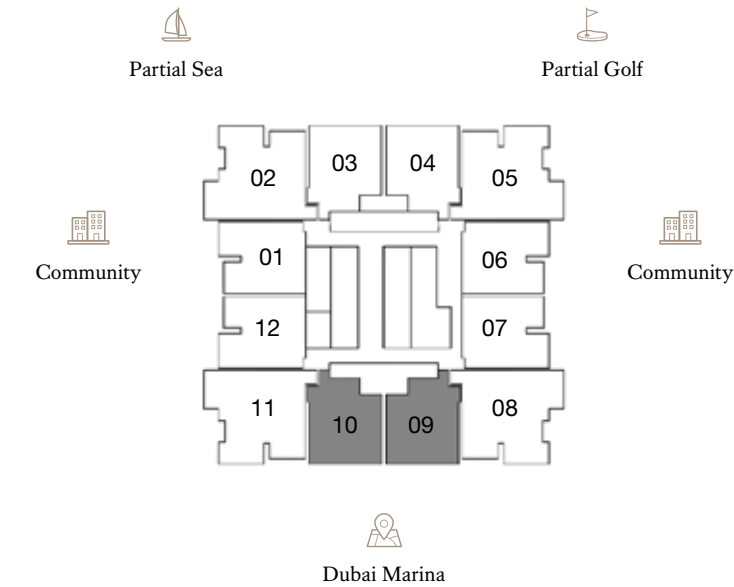
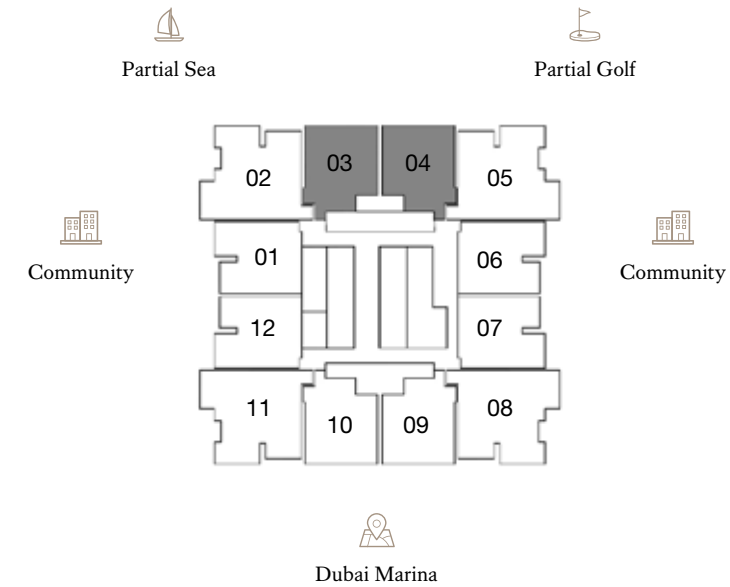
# Type 1A

FLOORS: 3 - 8, 11 - 14, 16 - 19, 22 - 25, 28 - 31, 33 - 36, 39 - 42

FLOORS: 3 - 8, 11 - 14, 16 - 19, 22 - 25, 28 - 31, 33 - 36, 39 - 42

- ♦ Internal Area 94.04 sq m / 1,012.24 sq ft
- ♦ Balcony Area 16.67 sq m / 179.43 sq ft
- ♦ Total Area 110.71 sq m / 1,191.68 sq ft

- ♦ Internal Area 89.84 sq m / 967.03 sq ft
- ♦ Balcony Area 15.29 sq m / 164.58 sq ft
- ♦ Total Area 105.13 sq m / 1,131.62 sq ft



1. All dimensions are in imperial and metric, and measured to the structural elements and exclude wall finishes and construction tolerances. 2. All materials, dimensions, and drawings are approximate only. 3. Information is subject to change without notice, at developer's absolute discretion. 4. Actual area may vary from the stated area. 5. Balcony sizes may vary between units. 6. Drawings are not to scale. 7. All images used are for illustrative purposes only and do not represent the actual size, features, specifications, fittings, or furnishings. 8. The developer reserves the right to make revisions/alterations, at its absolute discretion, without any liability whatsoever.

1. All dimensions are in imperial and metric, and measured to the structural elements and exclude wall finishes and construction tolerances. 2. All materials, dimensions, and drawings are approximate only. 3. Information is subject to change without notice, at developer's absolute discretion. 4. Actual area may vary from the stated area. 5. Balcony sizes may vary between units. 6. Drawings are not to scale. 7. All images used are for illustrative purposes only and do not represent the actual size, features, specifications, fittings, or furnishings. 8. The developer reserves the right to make revisions/alterations, at its absolute discretion, without any liability whatsoever.

# 1 Bedroom

# Type 2

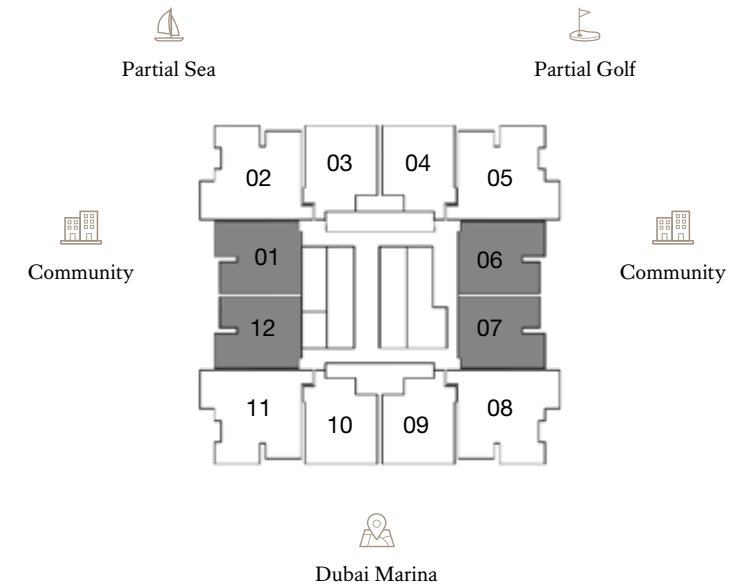
# 2 Bedroom

# Type 1

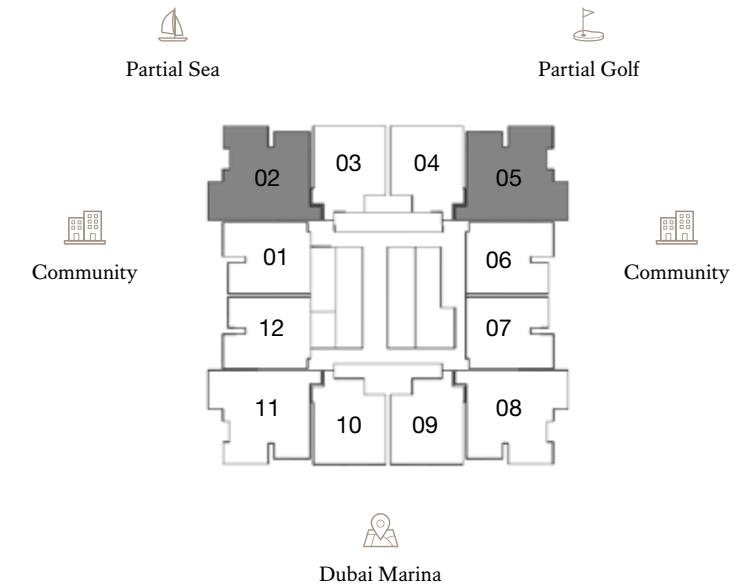
FLOORS: 3 - 8, 11 - 14, 16 - 19, 22 - 25, 28 - 31, 33 - 36, 39 - 42

FLOORS: 3, 4, 6, 7, 11, 12, 14, 16, 17, 19, 22, 23, 25, 28, 29, 31, 33, 34, 36, 39, 40, 42

- ♦ Internal Area 92.04 sq m / 990.71 sq ft
- ♦ Balcony Area 16.94 sq m / 182.34 sq ft
- ♦ Total Area 108.98 sq m / 1,173.06 sq ft



- ♦ Internal Area 130.26 sq m / 1,402.11 sq ft
- ♦ Balcony Area 33.2 sq m / 357.36 sq ft
- ♦ Total Area 163.46 sq m / 1,759.48 sq ft



1. All dimensions are in imperial and metric, and measured to the structural elements and exclude wall finishes and construction tolerances. 2. All materials, dimensions, and drawings are approximate only. 3. Information is subject to change without notice, at developer's absolute discretion. 4. Actual area may vary from the stated area. 5. Balcony sizes may vary between units. 6. Drawings are not to scale. 7. All images used are for illustrative purposes only and do not represent the actual size, features, specifications, fittings, or furnishings. 8. The developer reserves the right to make revisions/alterations, at its absolute discretion, without any liability whatsoever.

1. All dimensions are in imperial and metric, and measured to the structural elements and exclude wall finishes and construction tolerances. 2. All materials, dimensions, and drawings are approximate only. 3. Information is subject to change without notice, at developer's absolute discretion. 4. Actual area may vary from the stated area. 5. Balcony sizes may vary between units. 6. Drawings are not to scale. 7. All images used are for illustrative purposes only and do not represent the actual size, features, specifications, fittings, or furnishings. 8. The developer reserves the right to make revisions/alterations, at its absolute discretion, without any liability whatsoever.



# 2 Bedroom

# Type 1A

# 2 Bedroom

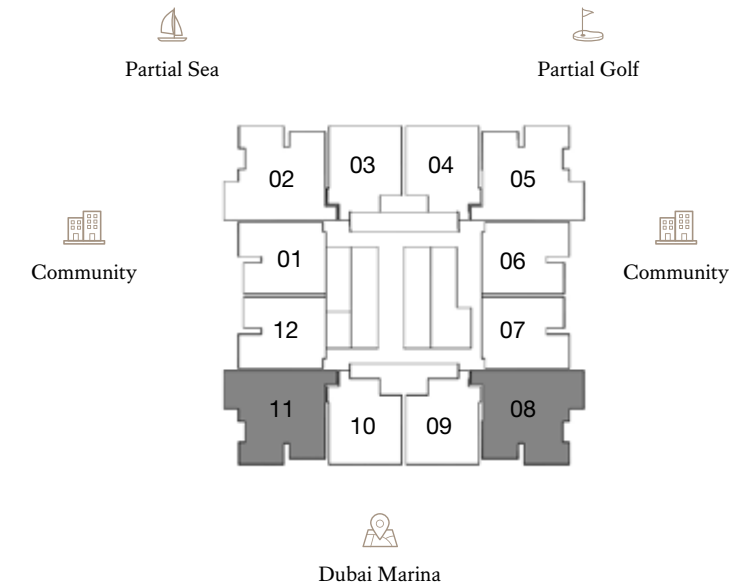
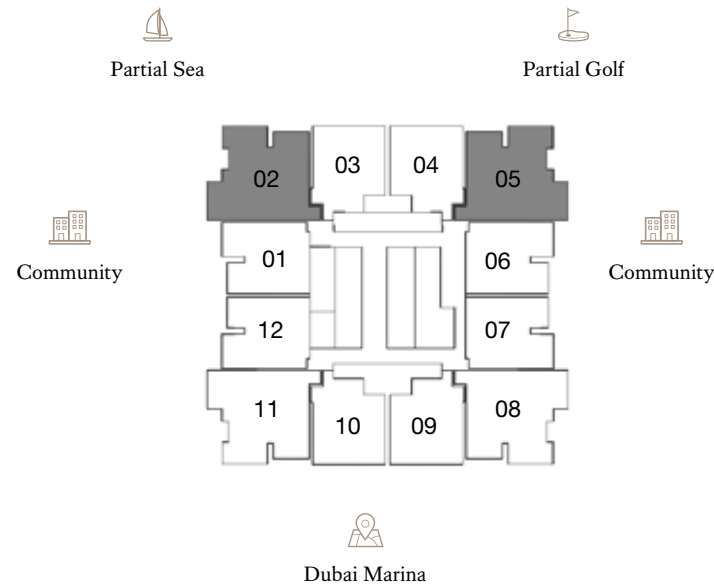
# Type 2

FLOORS: 5, 8, 13, 18, 24, 30, 35, 41

FLOORS: 3, 4, 6, 7, 11, 12, 14, 16, 17, 19, 22, 23, 25, 28, 29, 31, 33, 34, 36, 39, 40, 42

- ♦ Internal Area 130.43 sq m / 1,403.94 sq ft
- ♦ Balcony Area 22.8 sq m / 245.42 sq ft
- ♦ Total Area 153.23 sq m / 1,649.37 sq ft

- ♦ Internal Area 131.11 sq m / 1,411.26 sq ft
- ♦ Balcony Area 37.71 sq m / 405.91 sq ft
- ♦ Total Area 168.82 sq m / 1,817.18 sq ft



1. All dimensions are in imperial and metric, and measured to the structural elements and exclude wall finishes and construction tolerances. 2. All materials, dimensions, and drawings are approximate only. 3. Information is subject to change without notice, at developer's absolute discretion. 4. Actual area may vary from the stated area. 5. Balcony sizes may vary between units. 6. Drawings are not to scale. 7. All images used are for illustrative purposes only and do not represent the actual size, features, specifications, fittings, or furnishings. 8. The developer reserves the right to make revisions/alterations, at its absolute discretion, without any liability whatsoever.

1. All dimensions are in imperial and metric, and measured to the structural elements and exclude wall finishes and construction tolerances. 2. All materials, dimensions, and drawings are approximate only. 3. Information is subject to change without notice, at developer's absolute discretion. 4. Actual area may vary from the stated area. 5. Balcony sizes may vary between units. 6. Drawings are not to scale. 7. All images used are for illustrative purposes only and do not represent the actual size, features, specifications, fittings, or furnishings. 8. The developer reserves the right to make revisions/alterations, at its absolute discretion, without any liability whatsoever.

# 2 Bedroom

# Type 2A

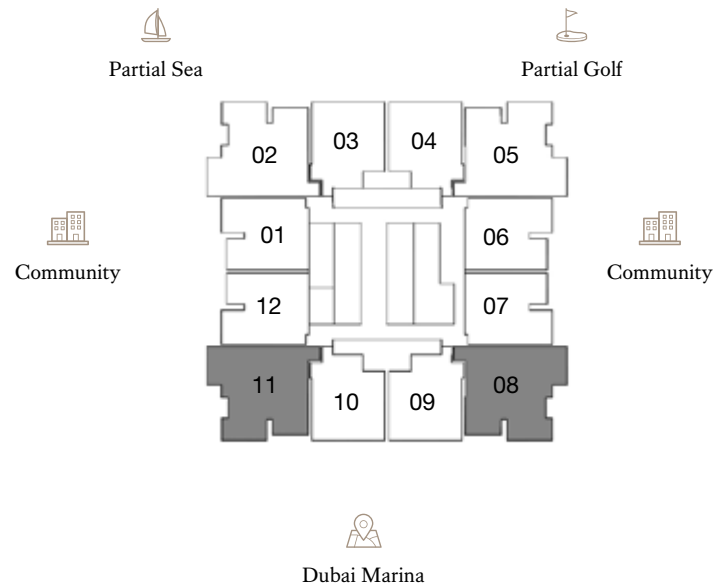


Kempinski  
Marina Residences

DUBAI

FLOORS: 5, 8, 13, 18, 24, 30, 35, 41

- ♦ Internal Area 131.11 sq m / 1,411.26 sq ft
- ♦ Balcony Area 25.51 sq m / 274.59 sq ft
- ♦ Total Area 156.62 sq m / 1,685.86 sq ft



# DUPLEX APARTMENTS

1. All dimensions are in imperial and metric, and measured to the structural elements and exclude wall finishes and construction tolerances. 2. All materials, dimensions, and drawings are approximate only. 3. Information is subject to change without notice, at developer's absolute discretion. 4. Actual area may vary from the stated area. 5. Balcony sizes may vary between units. 6. Drawings are not to scale. 7. All images used are for illustrative purposes only and do not represent the actual size, features, specifications, fittings, or furnishings. 8. The developer reserves the right to make revisions/alterations, at its absolute discretion, without any liability whatsoever.

# 2 Bedroom Duplex | Type 1

## Lower Floor

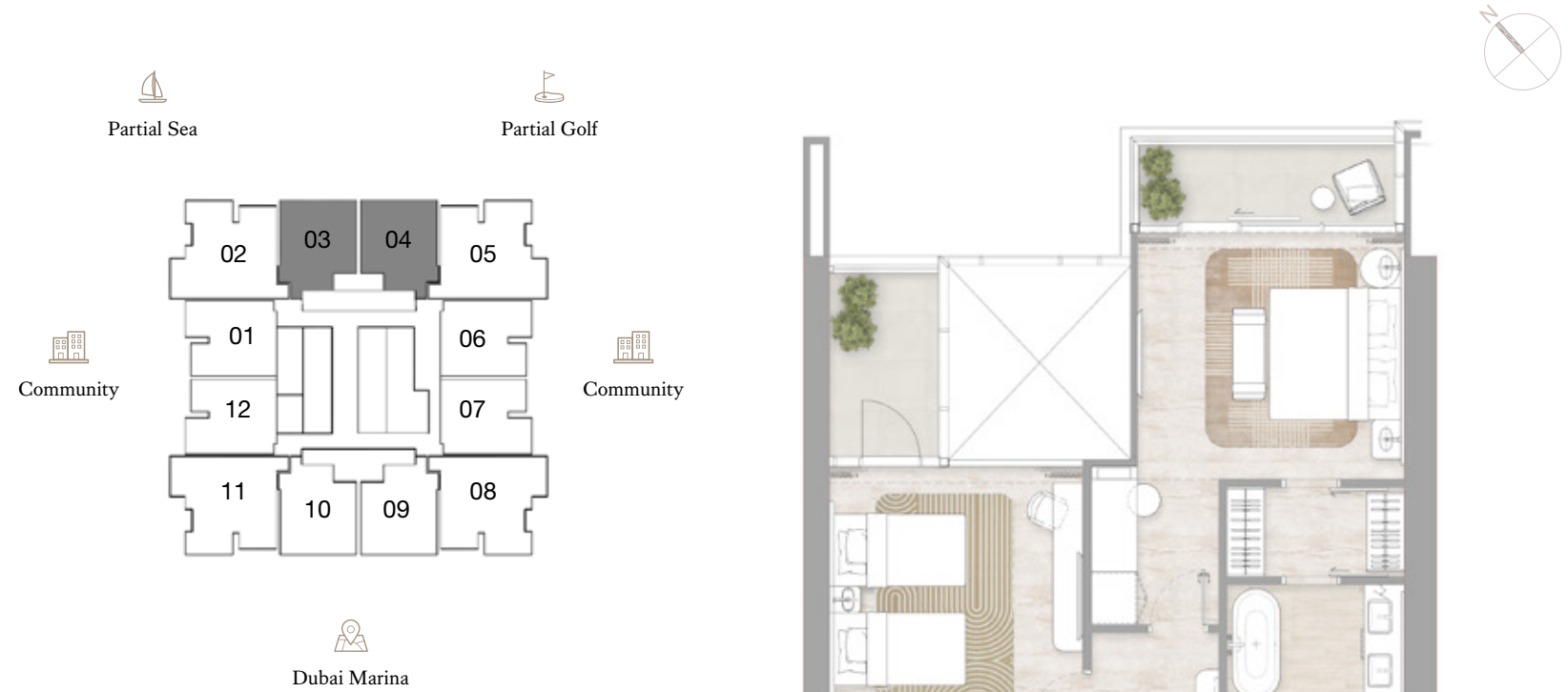
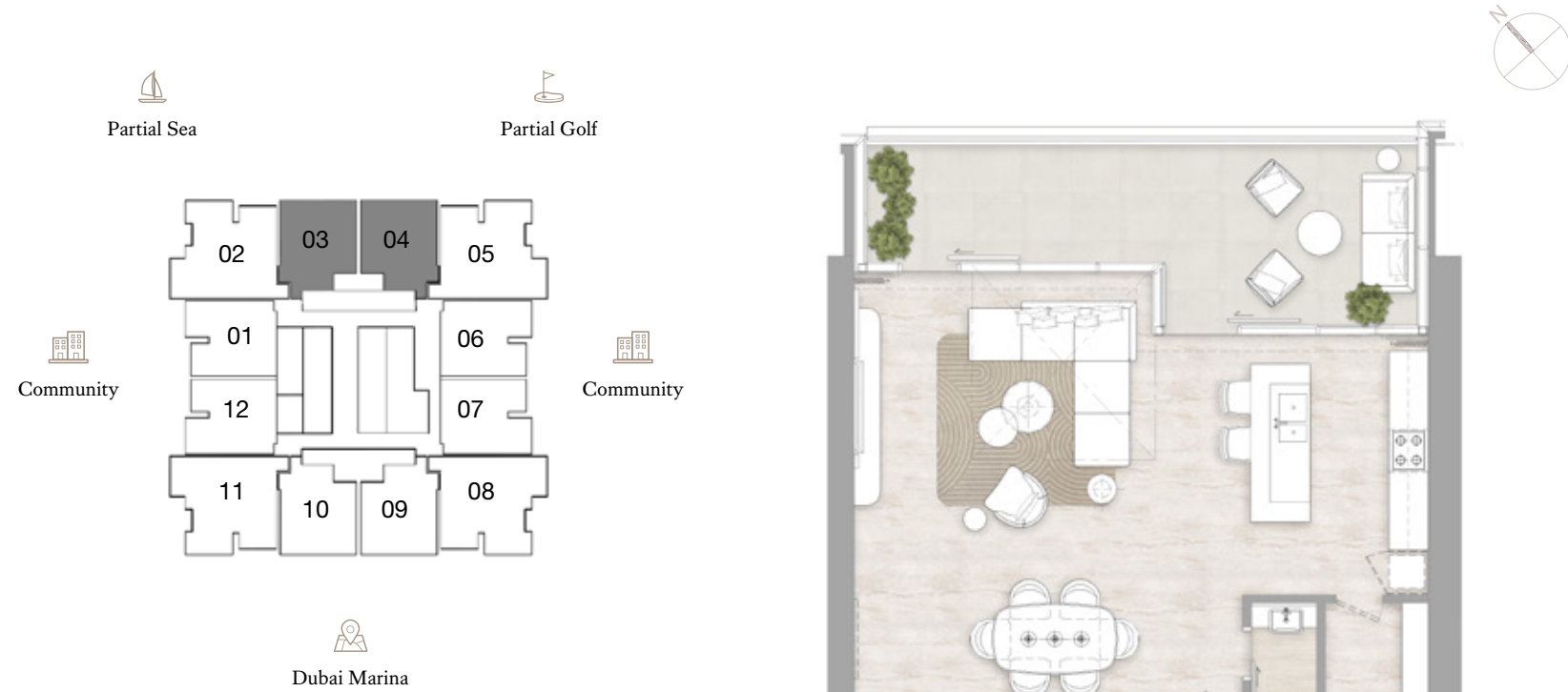
## Upper Floor

FLOORS: 9, 20, 26, 37



Kempinski  
Marina Residences

DUBAI



- Internal Area 157.44 sq m / 1,694.67 sq ft
- Balcony Area 32.32 sq m / 347.89 sq ft
- Total Area 189.76 sq m / 2,042.58 sq ft

1. All dimensions are in imperial and metric, and measured to the structural elements and exclude wall finishes and construction tolerances. 2. All materials, dimensions, and drawings are approximate only. 3. Information is subject to change without notice, at developer's absolute discretion. 4. Actual area may vary from the stated area. 5. Balcony sizes may vary between units. 6. Drawings are not to scale. 7. All images used are for illustrative purposes only and do not represent the actual size, features, specifications, fittings, or furnishings. 8. The developer reserves the right to make revisions/alterations, at its absolute discretion, without any liability whatsoever.

# 2 Bedroom Duplex | Type 1A

## Lower Floor

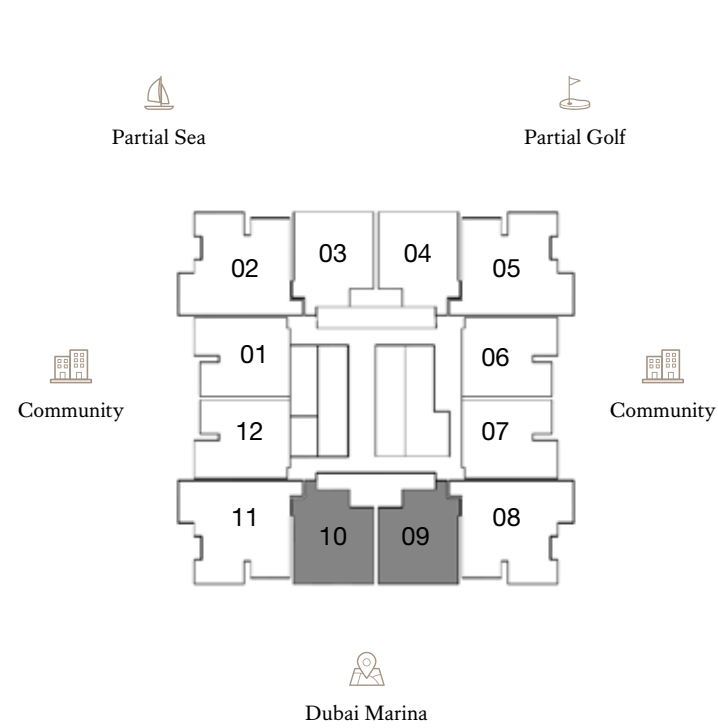
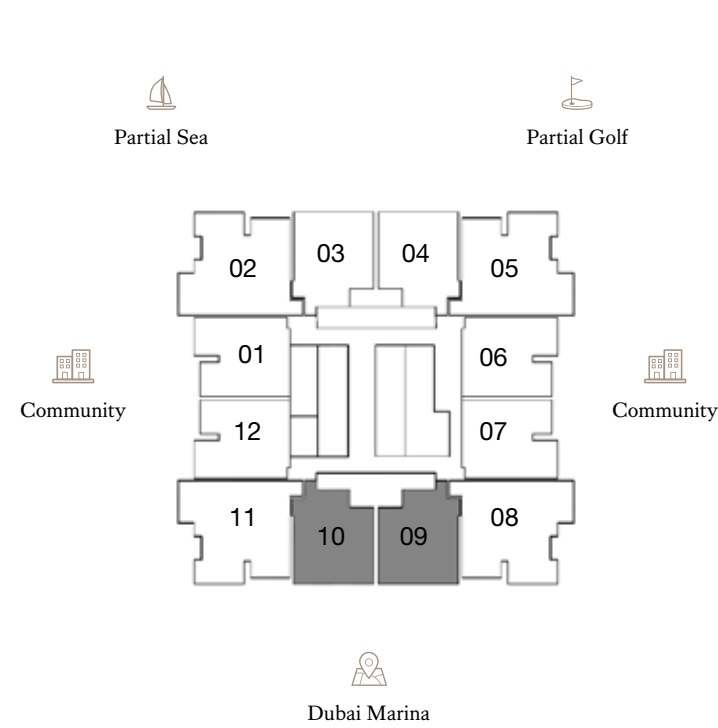
## Upper Floor



Kempinski  
Marina Residences

DUBAI

FLOORS: 9, 20, 26, 37



- ♦ Internal Area 155.19 sq m / 1,670.45 sq ft
- ♦ Balcony Area 30.74 sq m / 330.88 sq ft
- ♦ Total Area 185.93 sq m / 2,001.35 sq ft

1. All dimensions are in imperial and metric, and measured to the structural elements and exclude wall finishes and construction tolerances. 2. All materials, dimensions, and drawings are approximate only. 3. Information is subject to change without notice, at developer's absolute discretion. 4. Actual area may vary from the stated area. 5. Balcony sizes may vary between units. 6. Drawings are not to scale. 7. All images used are for illustrative purposes only and do not represent the actual size, features, specifications, fittings, or furnishings. 8. The developer reserves the right to make revisions/alterations, at its absolute discretion, without any liability whatsoever.



# 2 Bedroom Duplex | Type 2

## Lower Floor

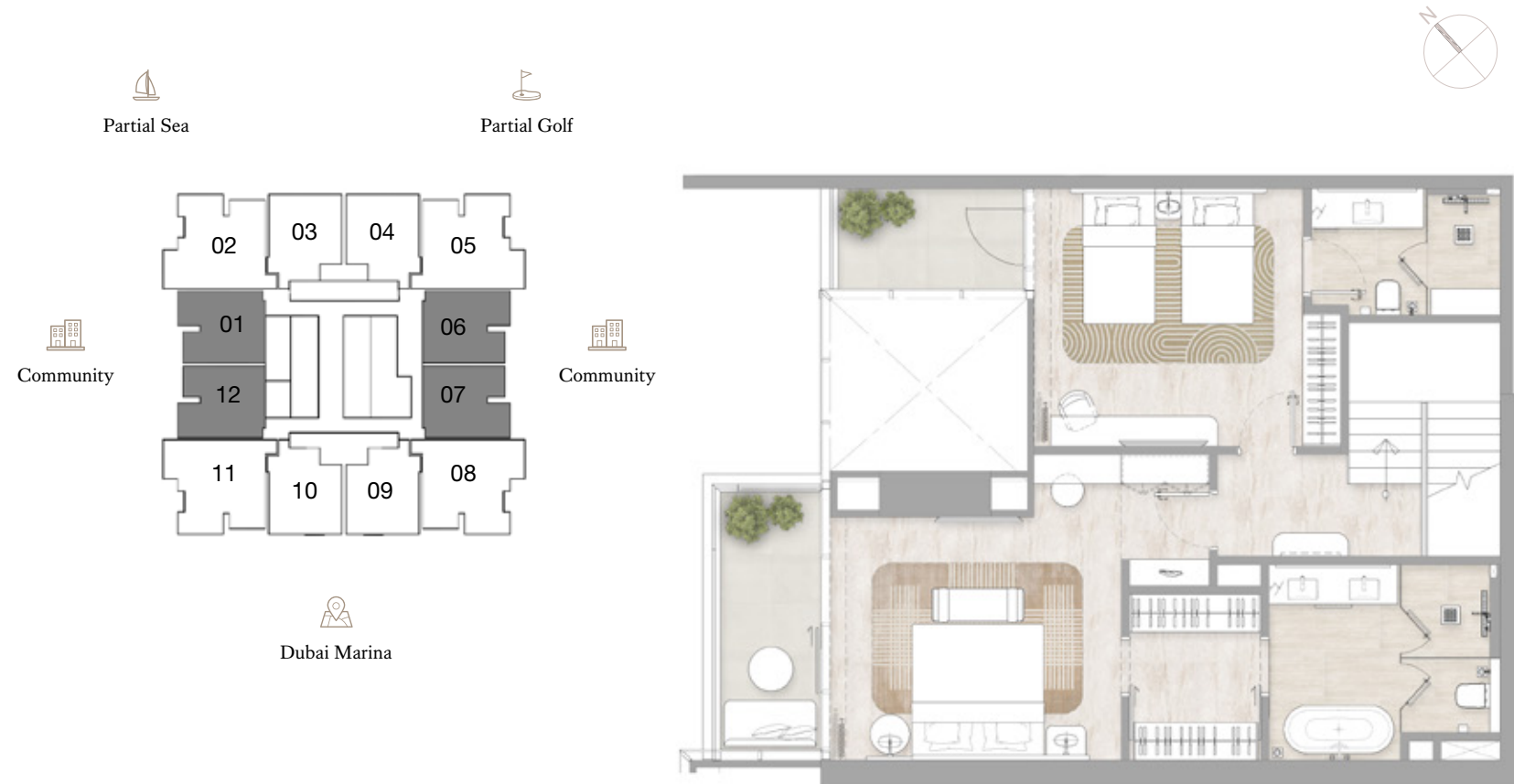
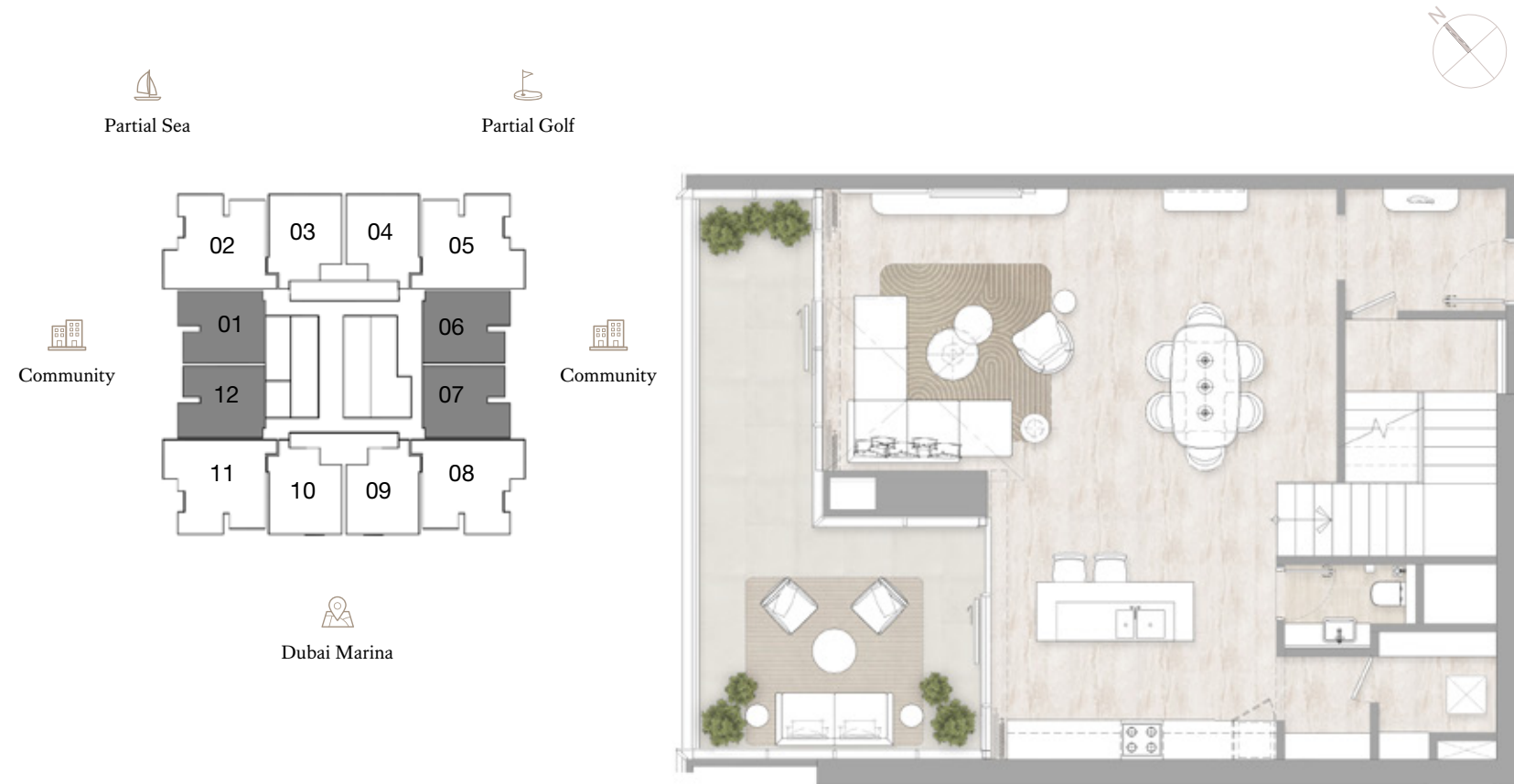
## Upper Floor



Kempinski  
Marina Residences

DUBAI

FLOORS: 9, 20, 26, 37



- Internal Area 163.61 sq m / 1,761.08 sq ft
- Balcony Area 37.41 sq m / 402.68 sq ft
- Total Area 201.02 sq m / 2,163.78 sq ft

1. All dimensions are in imperial and metric, and measured to the structural elements and exclude wall finishes and construction tolerances. 2. All materials, dimensions, and drawings are approximate only. 3. Information is subject to change without notice, at developer's absolute discretion. 4. Actual area may vary from the stated area. 5. Balcony sizes may vary between units. 6. Drawings are not to scale. 7. All images used are for illustrative purposes only and do not represent the actual size, features, specifications, fittings, or furnishings. 8. The developer reserves the right to make revisions/alterations, at its absolute discretion, without any liability whatsoever.



# 3 Bedroom Duplex | Type 1

## Lower Floor

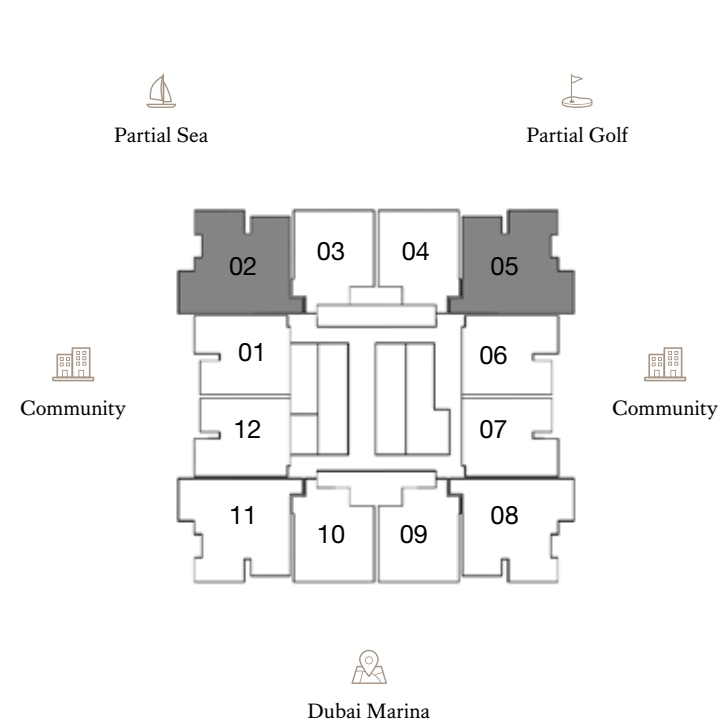
## Upper Floor

FLOORS: 9, 20, 26, 37

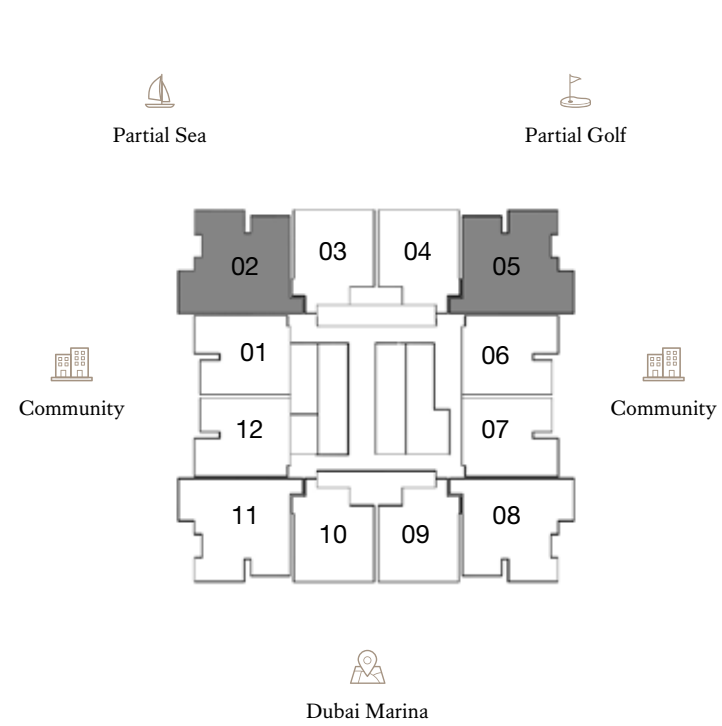


Kempinski  
Marina Residences

DUBAI



- Internal Area 234.2 sq m / 2,520.91 sq ft
- Balcony Area 49.05 sq m / 527.97 sq ft
- Total Area 283.25 sq m / 3,048.90 sq ft



1. All dimensions are in imperial and metric, and measured to the structural elements and exclude wall finishes and construction tolerances. 2. All materials, dimensions, and drawings are approximate only. 3. Information is subject to change without notice, at developer's absolute discretion. 4. Actual area may vary from the stated area. 5. Balcony sizes may vary between units. 6. Drawings are not to scale. 7. All images used are for illustrative purposes only and do not represent the actual size, features, specifications, fittings, or furnishings. 8. The developer reserves the right to make revisions/alterations, at its absolute discretion, without any liability whatsoever.

# 3 Bedroom Duplex | Type 2

## Lower Floor

## Upper Floor



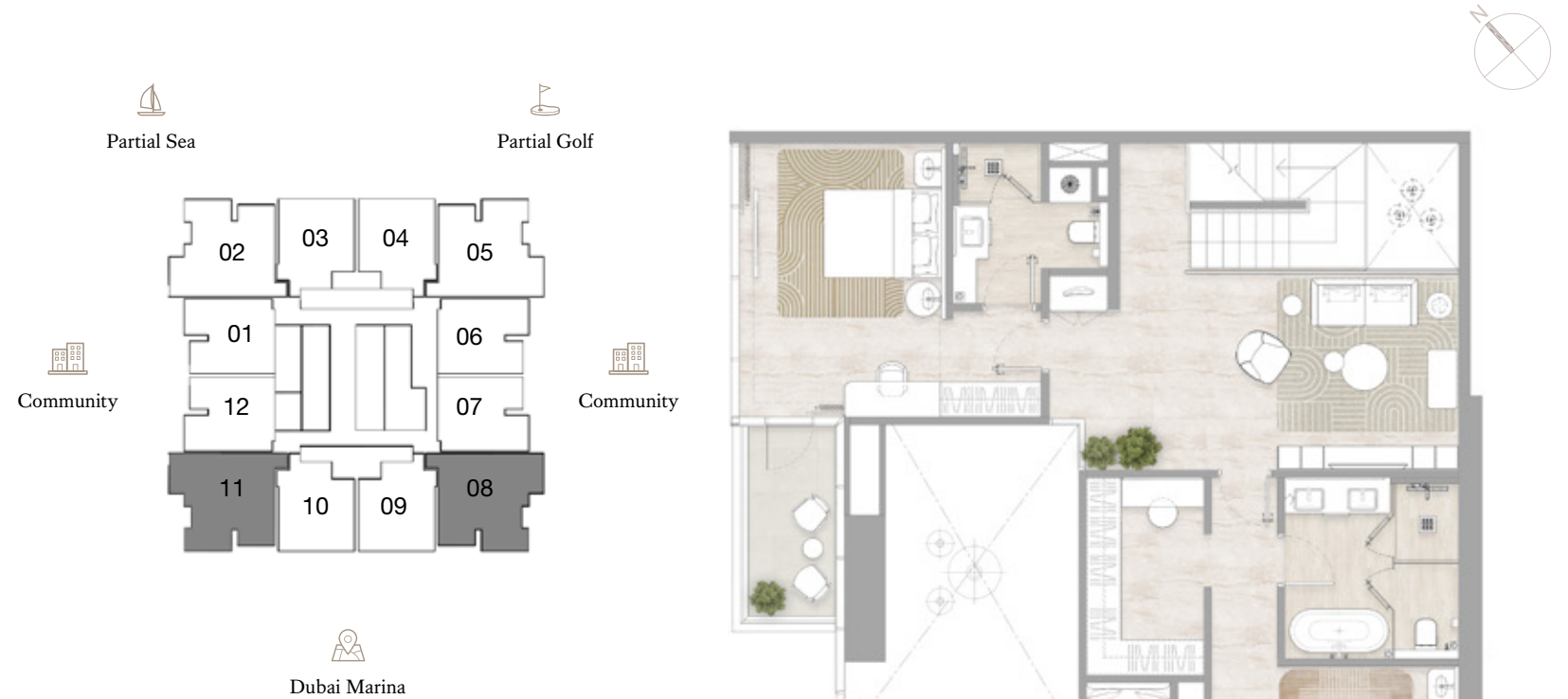
Kempinski  
Marina Residences

DUBAI

FLOORS: 9, 20, 26, 37



- ♦ Internal Area 239.87 sq m / 2,581.94 sq ft
- ♦ Balcony Area 51.44 sq m / 553.7 sq ft
- ♦ Total Area 291.31 sq m / 3,135.66 sq ft



1. All dimensions are in imperial and metric, and measured to the structural elements and exclude wall finishes and construction tolerances. 2. All materials, dimensions, and drawings are approximate only. 3. Information is subject to change without notice, at developer's absolute discretion. 4. Actual area may vary from the stated area. 5. Balcony sizes may vary between units. 6. Drawings are not to scale. 7. All images used are for illustrative purposes only and do not represent the actual size, features, specifications, fittings, or furnishings. 8. The developer reserves the right to make revisions/alterations, at its absolute discretion, without any liability whatsoever.

# 4 Bedroom Duplex | Type 1

## Lower Floor

## Upper Floor



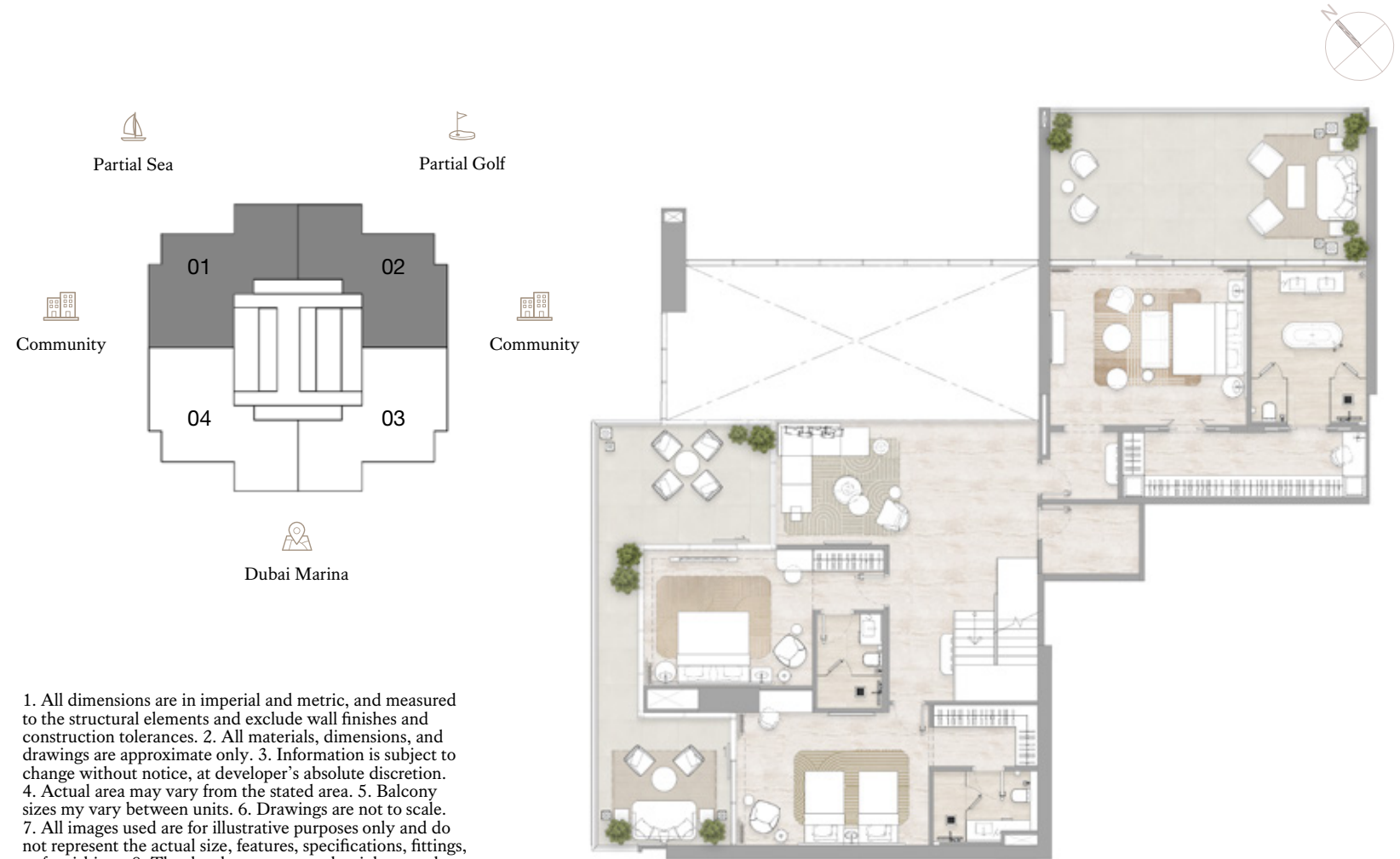
Kempinski  
Marina Residences

DUBAI

FLOORS: 43



- ♦ Internal Area 385.2 sq m / 4,146.26 sq ft
- ♦ Balcony Area 228.92 sq m / 2,464.07 sq ft
- ♦ Total Area 614.12 sq m / 6,610.39 sq ft



1. All dimensions are in imperial and metric, and measured to the structural elements and exclude wall finishes and construction tolerances.
2. All materials, dimensions, and drawings are approximate only.
3. Information is subject to change without notice, at developer's absolute discretion.
4. Actual area may vary from the stated area.
5. Balcony sizes may vary between units.
6. Drawings are not to scale.
7. All images used are for illustrative purposes only and do not represent the actual size, features, specifications, fittings, or furnishings.
8. The developer reserves the right to make revisions/alterations, at its absolute discretion, without any liability whatsoever.



# 4 Bedroom Duplex | Type 1A

## Lower Floor

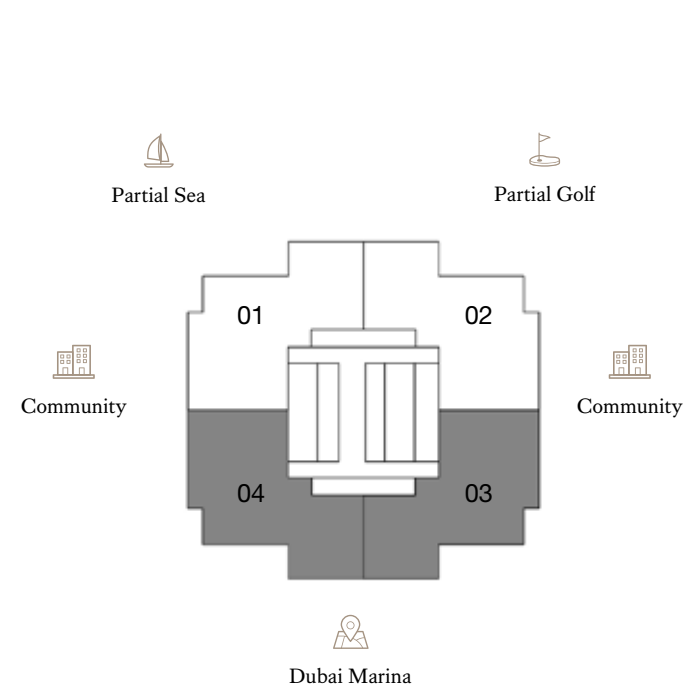
## Upper Floor



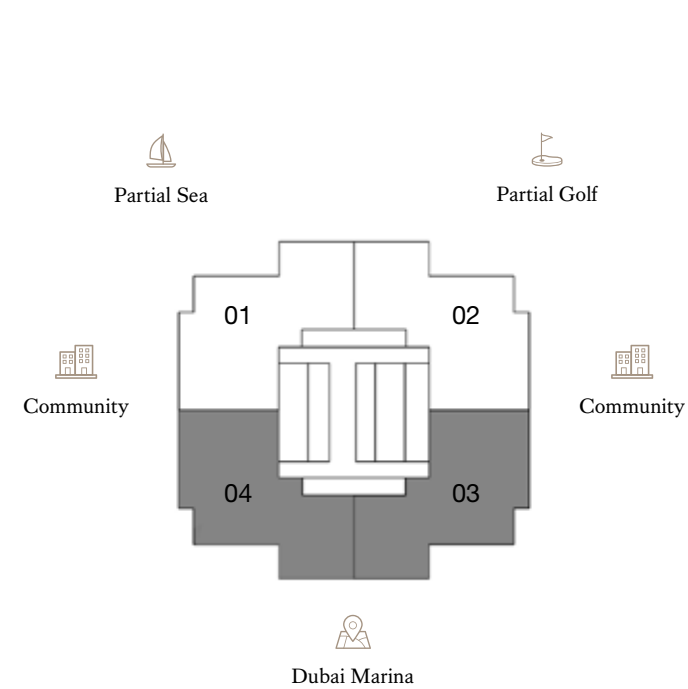
Kempinski  
Marina Residences

DUBAI

FLOORS: 43



- ♦ Internal Area 387.08 sq m / 4,166.49 sq ft
- ♦ Balcony Area 218.58 sq m / 2,352.78 sq ft
- ♦ Total Area 605.66 sq m / 6,519.32 sq ft



1. All dimensions are in imperial and metric, and measured to the structural elements and exclude wall finishes and construction tolerances. 2. All materials, dimensions, and drawings are approximate only. 3. Information is subject to change without notice, at developer's absolute discretion. 4. Actual area may vary from the stated area. 5. Balcony sizes may vary between units. 6. Drawings are not to scale. 7. All images used are for illustrative purposes only and do not represent the actual size, features, specifications, fittings, or furnishings. 8. The developer reserves the right to make revisions/alterations, at its absolute discretion, without any liability whatsoever.



# 5 Bedroom Duplex | Type 1

## Lower Floor

## Upper Floor

FLOORS: 45, 47



Kempinski  
Marina Residences

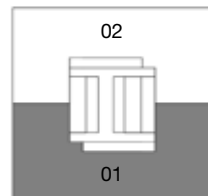
DUBAI



- Internal Area 693.58 sq m / 7,465.63 sq ft
- Balcony Area 480.2 sq m / 5,168.83 sq ft
- Total Area 1,173.78 sq m / 12,634.57 sq ft

Partial Sea Partial Golf

Community



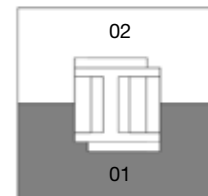
Community

Dubai Marina

1. All dimensions are in imperial and metric, and measured to the structural elements and exclude wall finishes and construction tolerances. 2. All materials, dimensions, and drawings are approximate only. 3. Information is subject to change without notice, at developer's absolute discretion. 4. Actual area may vary from the stated area. 5. Balcony sizes may vary between units. 6. Drawings are not to scale. 7. All images used are for illustrative purposes only and do not represent the actual size, features, specifications, fittings, or furnishings. 8. The developer reserves the right to make revisions/alterations, at its absolute discretion, without any liability whatsoever.

Partial Sea Partial Golf

Community



Community

Dubai Marina

# 5 Bedroom Duplex | Type 2

## Lower Floor

## Upper Floor



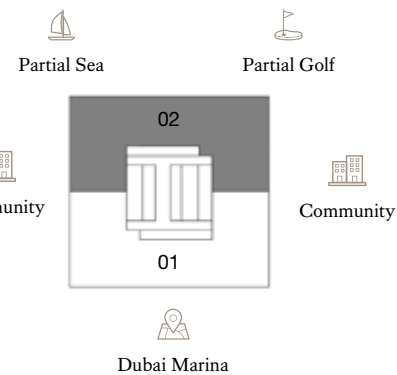
Kempinski  
Marina Residences

DUBAI

FLOORS: 45, 47



- ◆ Internal Area 693.58 sq m / 7,465.63 sq ft
- ◆ Balcony Area 480.2 sq m / 5,168.83 sq ft
- ◆ Total Area 1,173.78 sq m / 12,634.57 sq ft



1. All dimensions are in imperial and metric, and measured to the structural elements and exclude wall finishes and construction tolerances. 2. All materials, dimensions, and drawings are approximate only. 3. Information is subject to change without notice, at developer's absolute discretion. 4. Actual area may vary from the stated area. 5. Balcony sizes may vary between units. 6. Drawings are not to scale. 7. All images used are for illustrative purposes only and do not represent the actual size, features, specifications, fittings, or furnishings. 8. The developer reserves the right to make revisions/alterations, at its absolute discretion, without any liability whatsoever.



**WE ARE HUMAN**  
LIVE & INVEST

[wearehuman-agency.com](http://wearehuman-agency.com)  
Europe +33 1 89 31 15 16  
UAE: +971 50 140 4963